

Observing Progressive Delivery

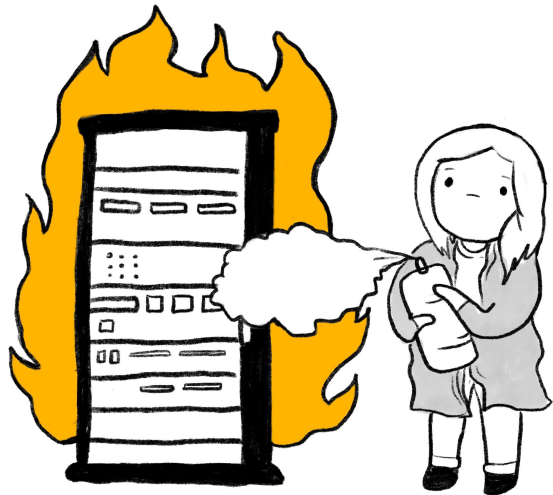
The Life of a Honeycomb Feature





Shelby Spees

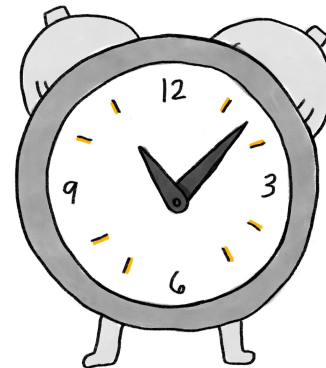
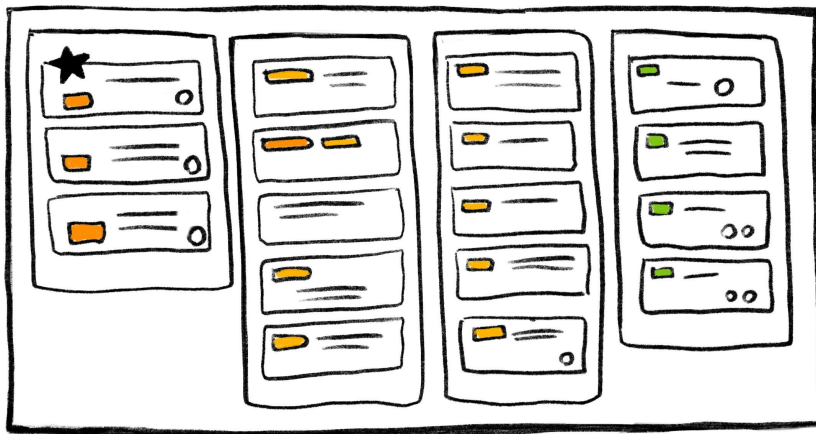
Developer Advocate at Honeycomb.io



Friday Deploys



Production is increasingly complex

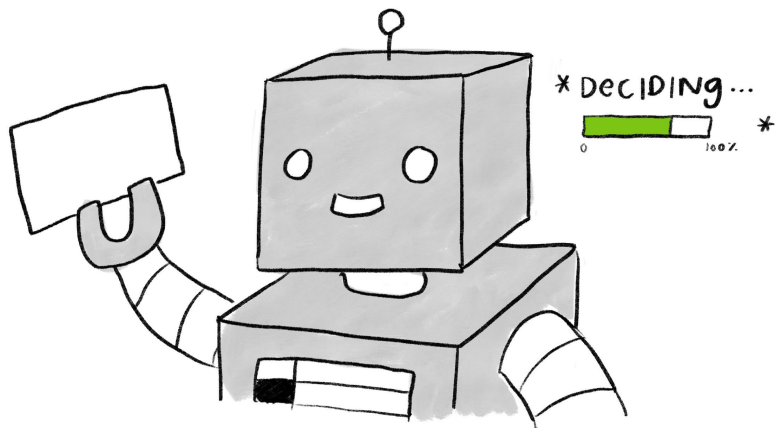


There's always pressure to ship fast



Safety enables speed

Progressive Delivery



Deploy != Release




Release changes gradually

Feature Flags

Separate deploys from releases

- conditionally enable or disable a specific code path
- changes propagate faster than a deploy

 Evaluated 20 seconds ago

  true, false



 Evaluated 20 seconds ago

 false - off variation




 Evaluated 21 seconds ago

 false - off variation



 Evaluated 20 seconds ago

  true, false



 Evaluated 20 seconds ago

 true



 Evaluated 20 seconds ago

 true



Teams that use feature flags

Deploy **9x more often**

Release new features **27% faster**

Time from commit to deploy **shrank by 76%**

46% of teams got their MTTR (mean time to recovery) down to <1hr

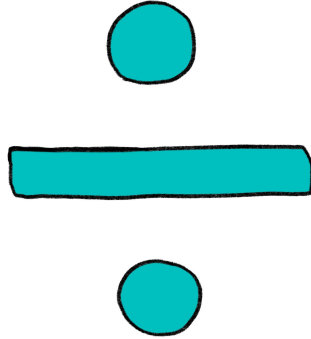


LaunchDarkly



Source: *The ROI of Feature Management*, LaunchDarkly





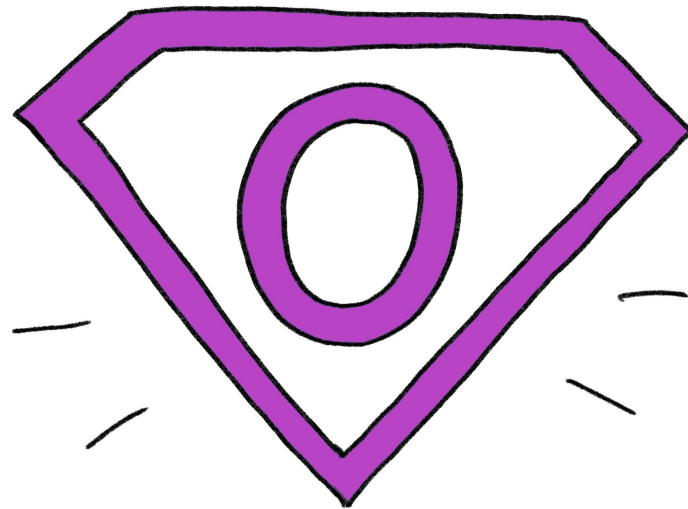
Velocity is only part of the equation



Observability-Driven Development

What is observability?

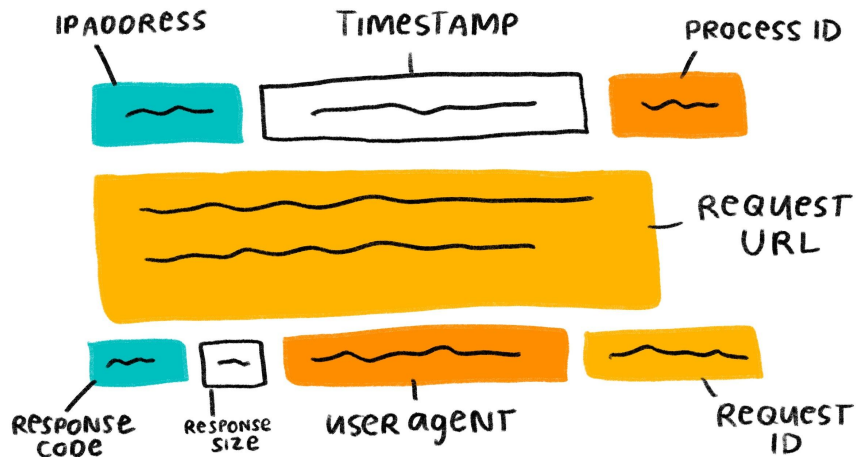
in software: the ability to understand and explain any state a system can get into, no matter how novel or bizarre, **without deploying new code**



How to gain observability?

Observability requires

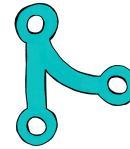
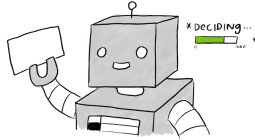
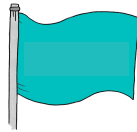
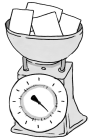
- capturing telemetry data with lots of runtime context
- interacting with that telemetry in near-real time

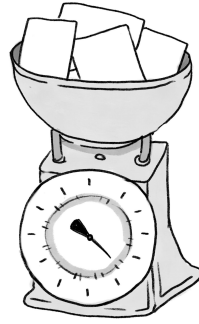


The Life of a Honeycomb Feature

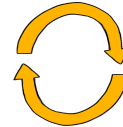
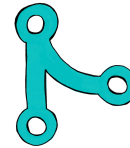
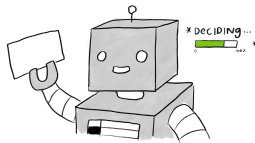
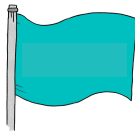


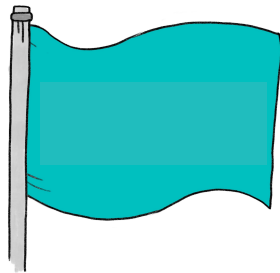
Instrument as we code.



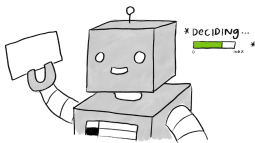
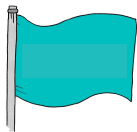


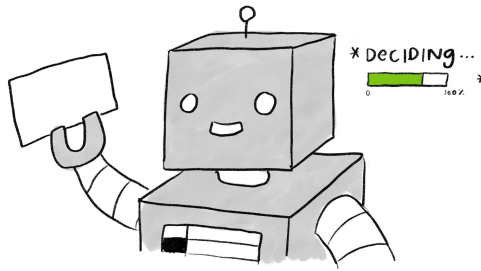
Functional and visual testing.



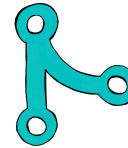
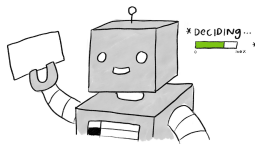
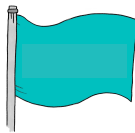


Design for feature flag deployment.

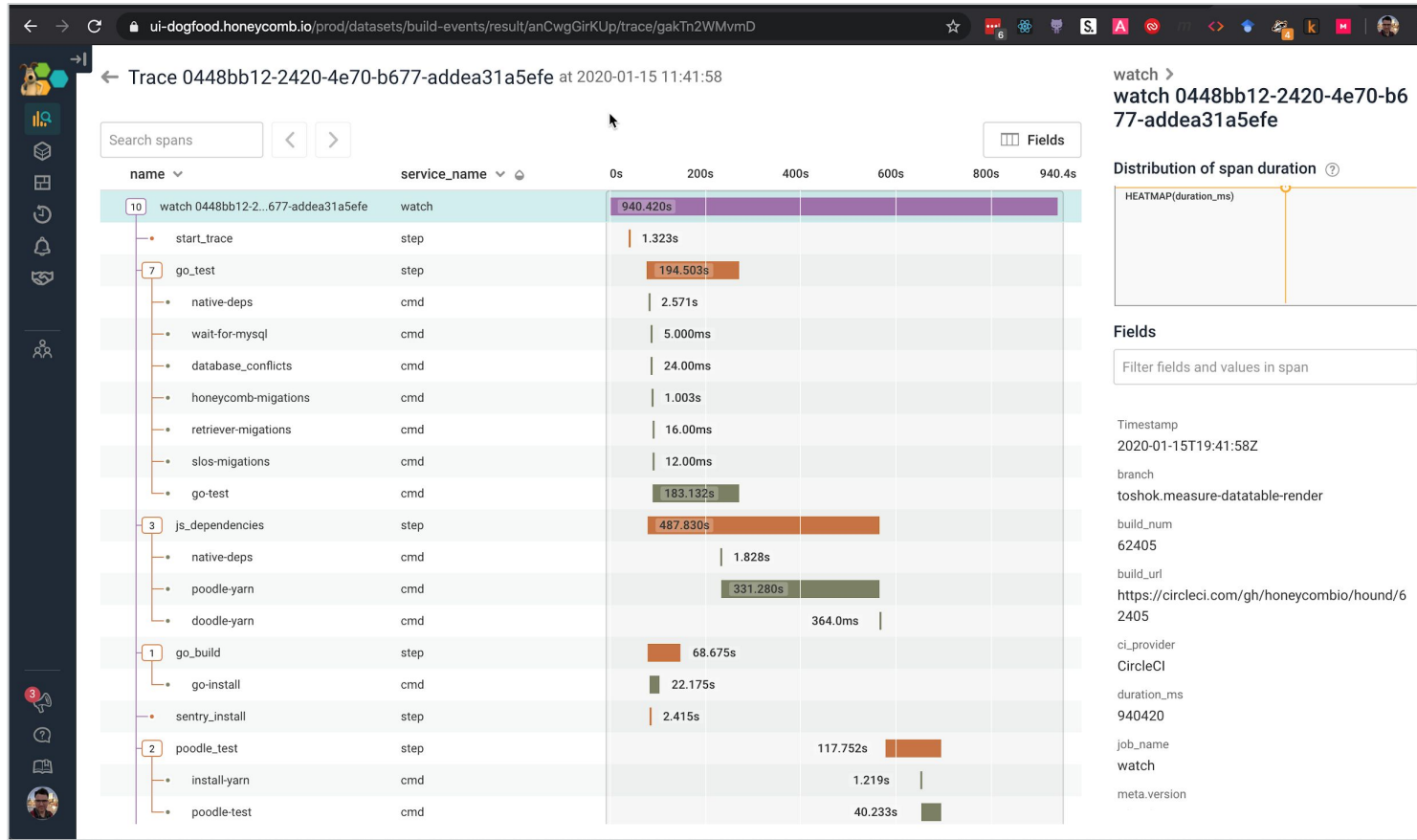




Automate integration.

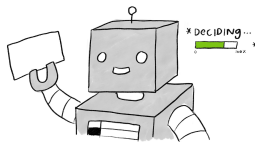
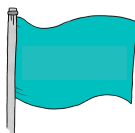


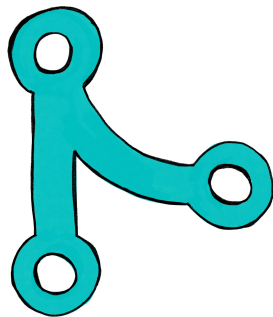
Trace of CircleCI build in Honeycomb



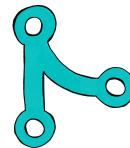
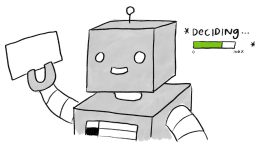
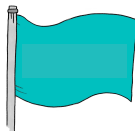


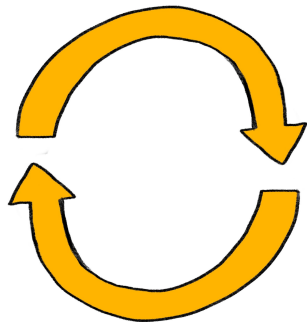
Human PR Review.



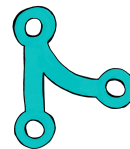
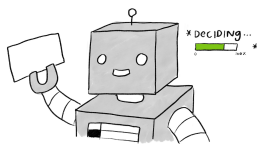
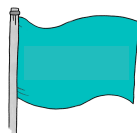


Green button merge.



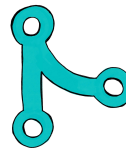
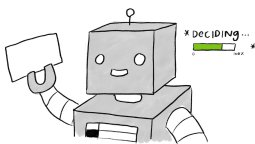
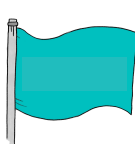


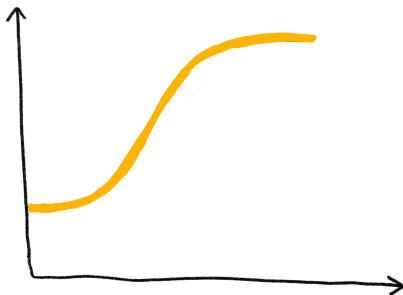
Auto-updates, rollbacks, & pins.





Observe behavior in prod.



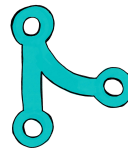
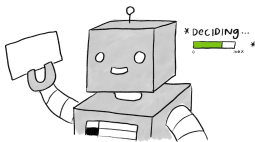
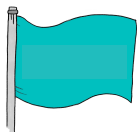


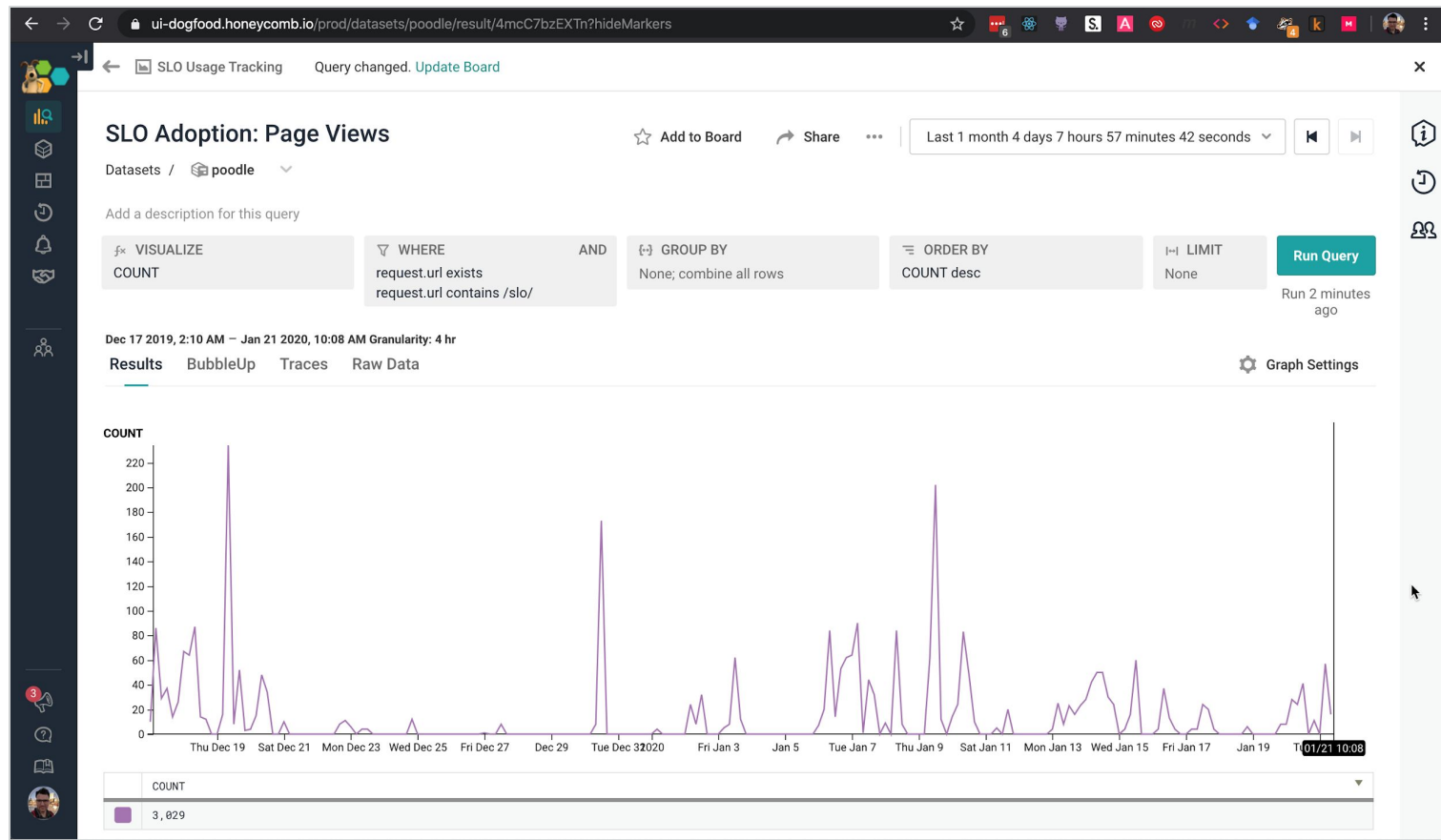
Prod: customers observe data.

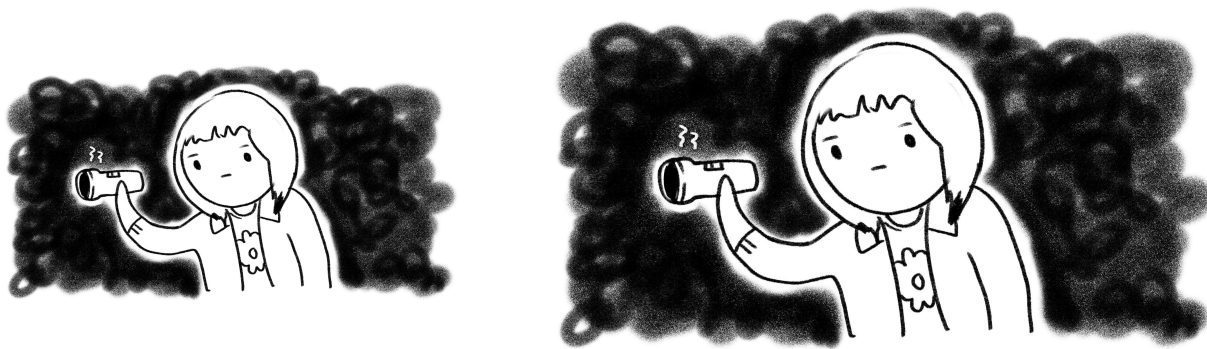




Dogfood observes prod.





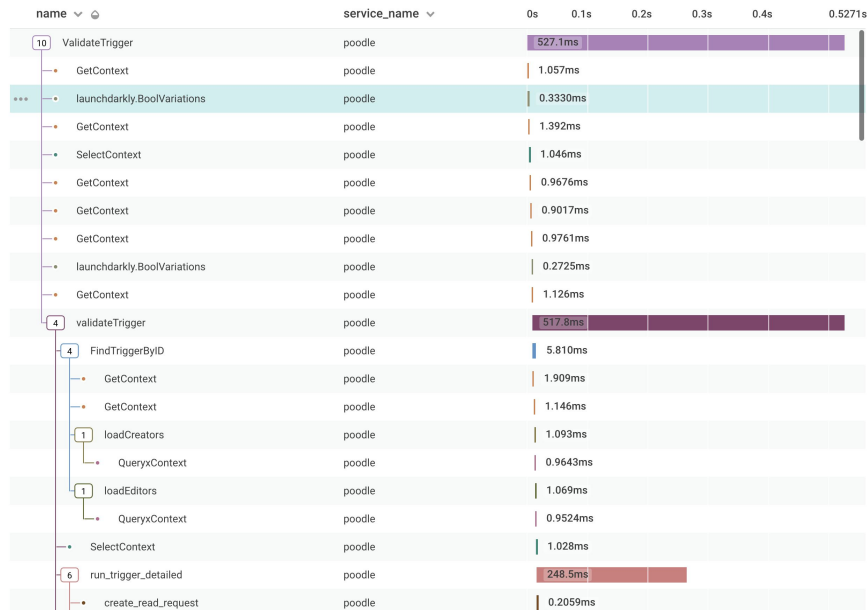


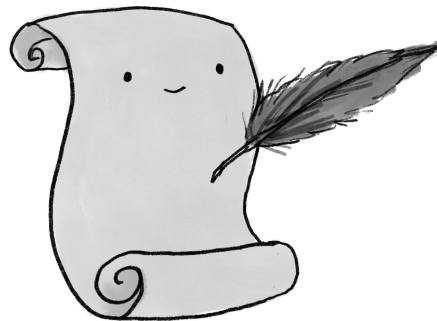
Kibble observes dogfood.



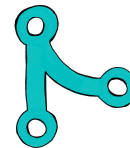
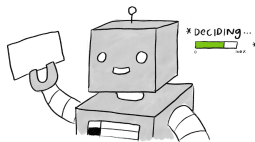
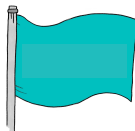
Progressive Delivery at Honeycomb

1. Enable for self in Dogfood
 - observe in Kibble
2. Enable for Honeycomb team in Dogfood
 - observe in Kibble
3. Enable for self in Prod
 - observe in Dogfood
4. Enable for Honeycomb team in Prod
 - observe in Dogfood
5. Enable for all Prod users 🎉
 - observe in Dogfood





That's how we confidently deploy on Fridays!



Want to hear more?

Blog

- “Using Honeycomb to remember to delete a feature flag”
go.hny.co/delete-flag

Webinar

- Progressive Delivery, co-presented by LaunchDarkly and Honeycomb
go.hny.co/LDxHNY2020





Questions?



Reach out!

honeycomb.io/shelby

@shelbyspees



www.honeycomb.io