



# Accessible by Design

Sketch tips & plugins to ensure accessibility

**Sketch Meetup** • Munich, Germany (28.02.19)



For..



For..

# Rapid Prototyping



For..

# Design Systems





For..

# Improved development Cycle



For..

Accessibility



## AGENDA.

**01** Case Study: Holidu

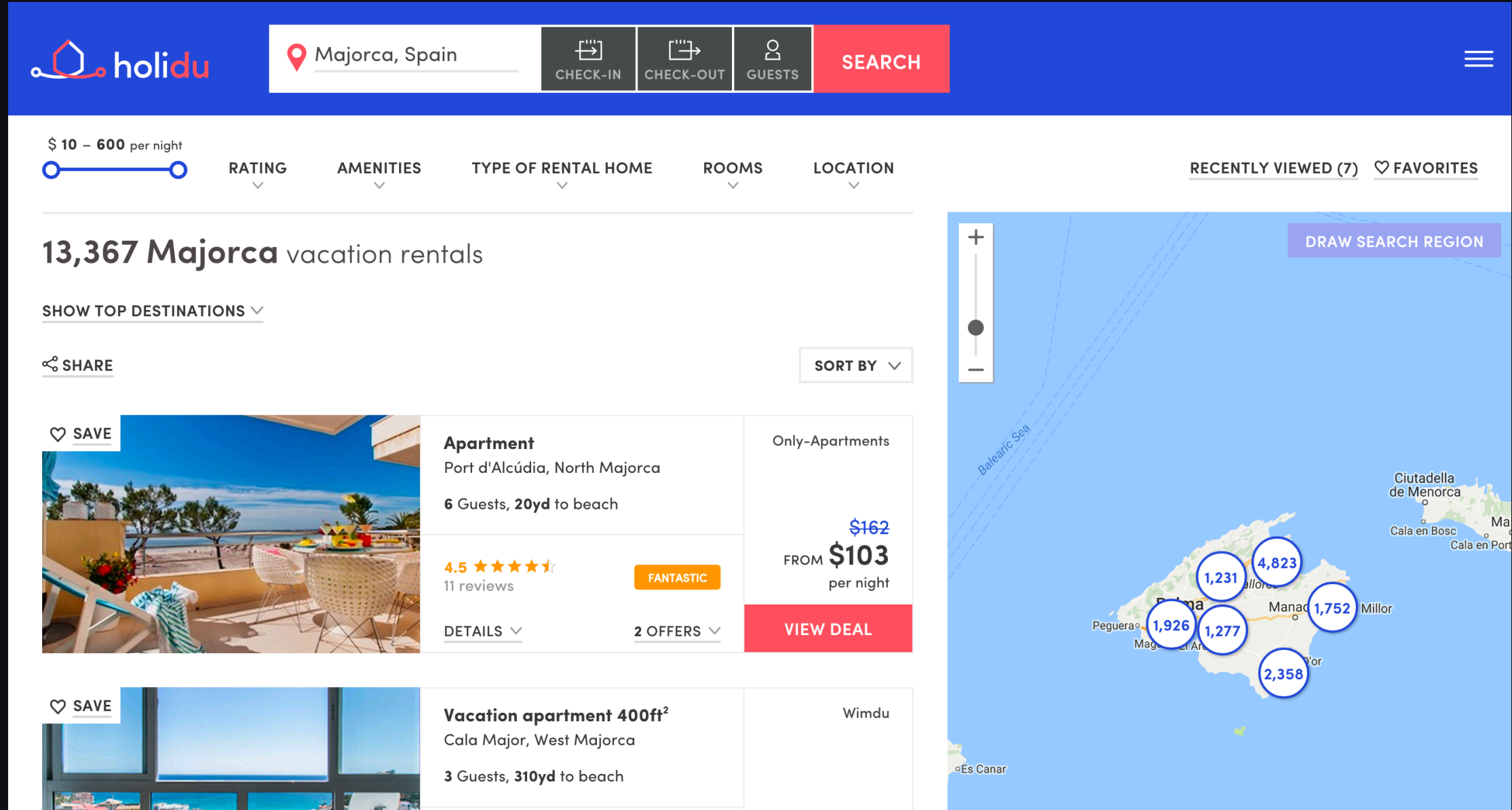
**02** DEMO: Sketch Flow + Plugins

**03** Q&A

# Accessibility...

Refers to the "ability to access" to any product, device, service, or environment by **everyone**

CASE STUDY: HOLIDU



Holidu’s website 1 year ago

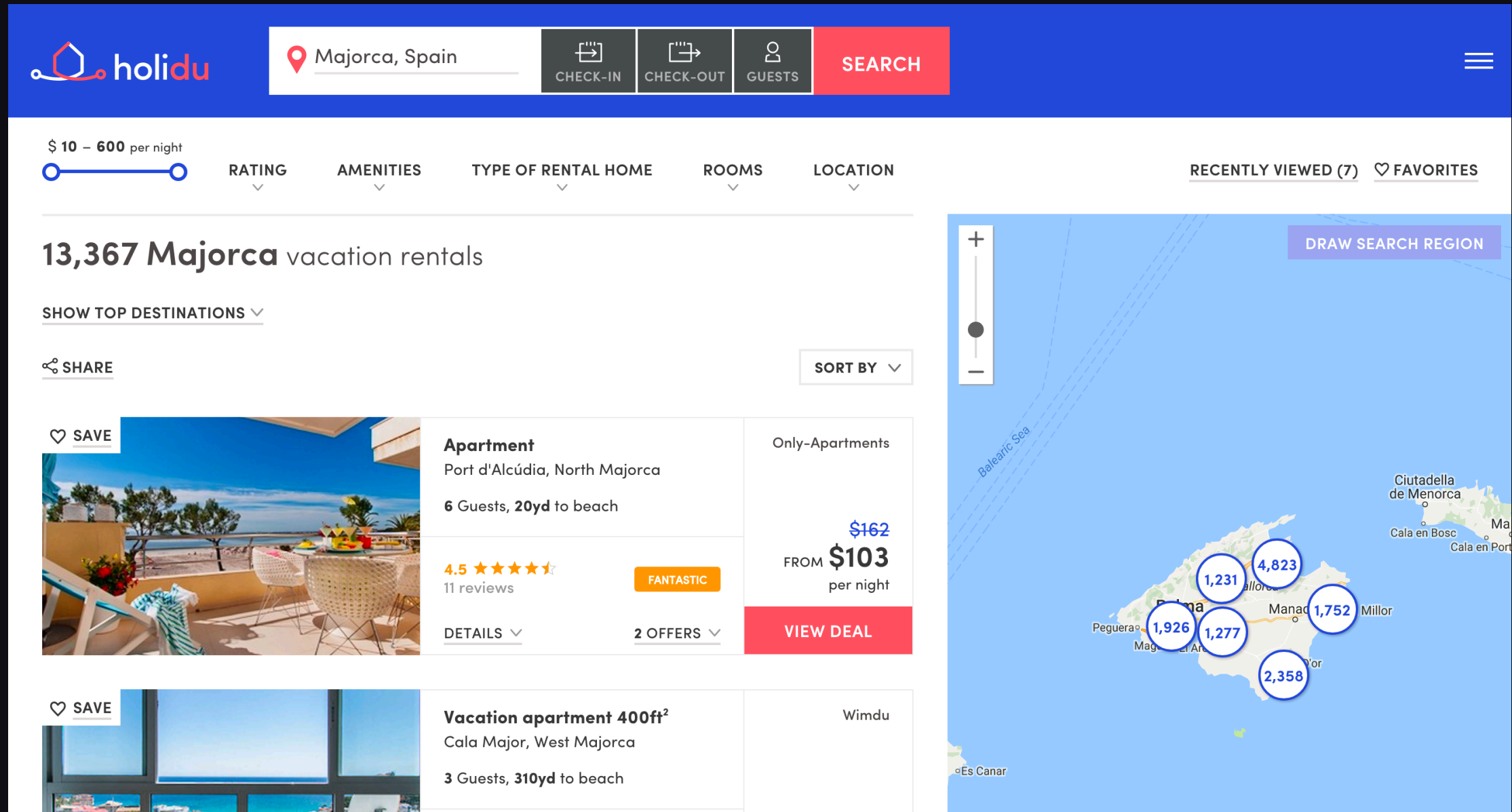
Worldwide

+ 20 Countries

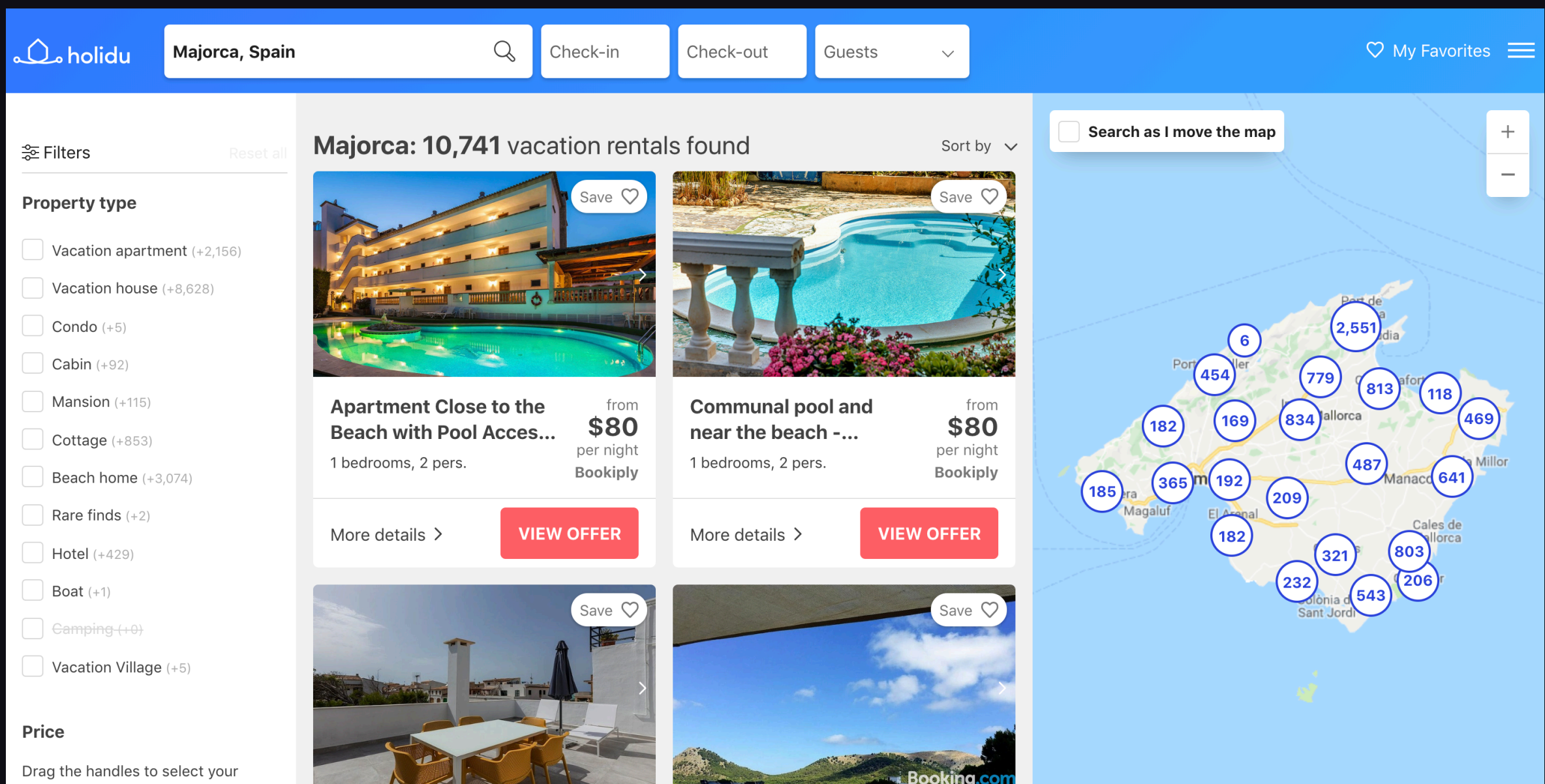
+ 3M users monthly

10% of the world's population  
live with a disability.

CASE STUDY: HOLIDU



Holidu’s website 1 year ago



Holidu’s website **today**

Our approach: **Start small, one step at a time.**



CASE STUDY: HOLIDU

Guidelines

guidelines

plugins

Challenges

Current

Ideation & Validation

Logo

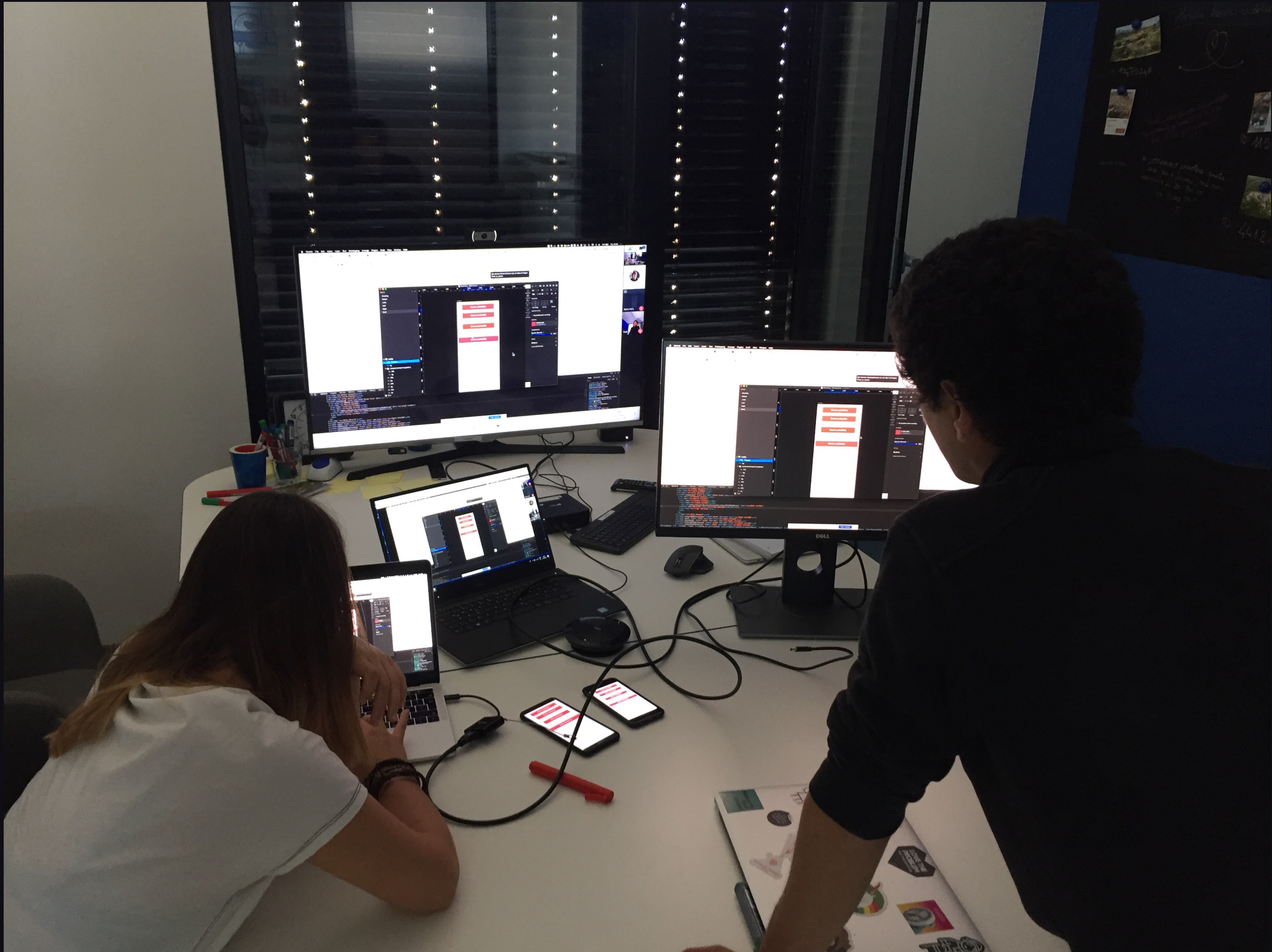
Travel Meets Tech

Monogram

Colours

Fonts

Forms





SKETCH PLUGINS FOR ACCESSIBILITY



+

Color contrast analyser

Stark

SVGO Optimiser

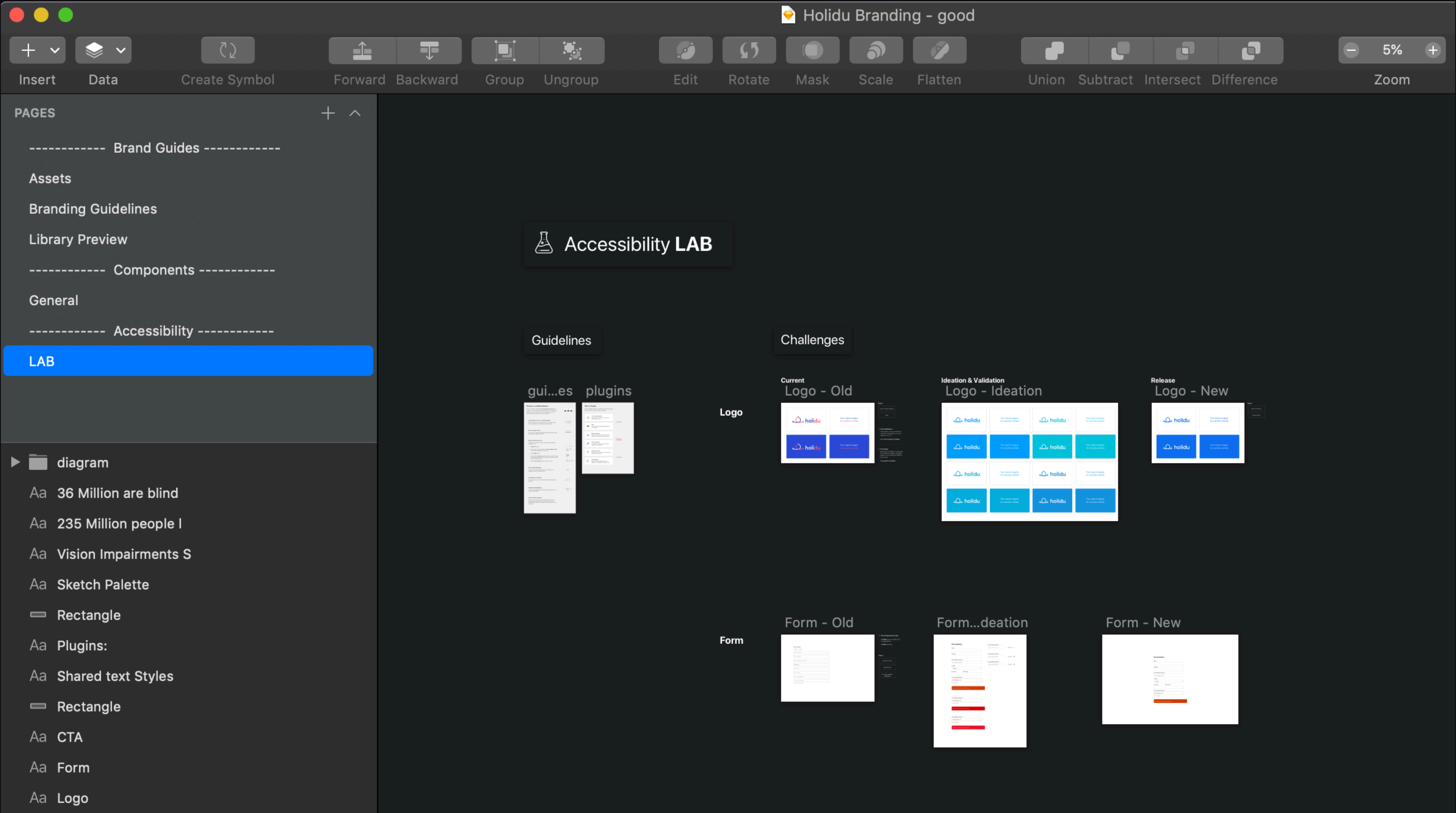
Image Compressor

=





DEMO



FILE

“The power of the web is in its  
**universality**”

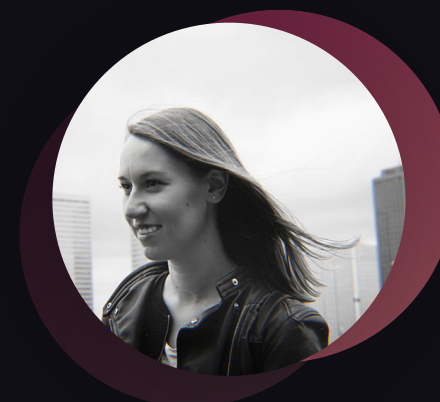
— Tim Berners-Lee  
Director of W3C and inventor of the World Wide Web.

**Thank you.**

# Accessible by Design

Sketch tips & plugins to ensure accessibility

**Sketch Meetup** • Munich, Germany (28.02.19)



**Núria Peña.**

Team Lead of Design at Holidu  
Munich Accessibility Meetup

 @nuriapenya