

Talk

Towards a knowledge graph for the House of Commons Library

SILVER OLIVER — Head of Information Architecture at Data Language

ANYA SOMERVILLE — Head of Indexing and Data Management at the House of Commons Library

London 2025



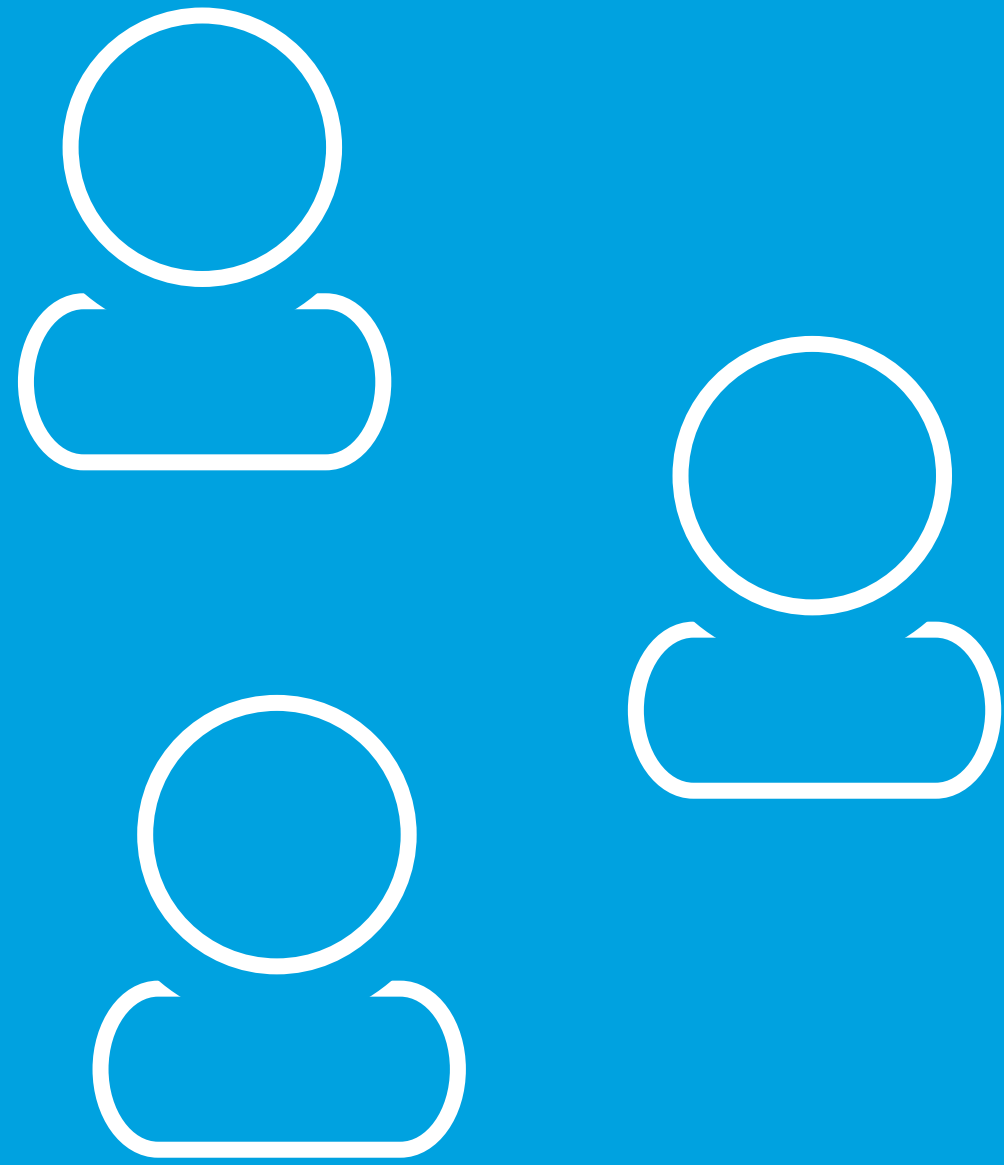
Towards a knowledge graph for the House of Commons Library



The House of
Commons Library



Not (entirely) this
kind of library

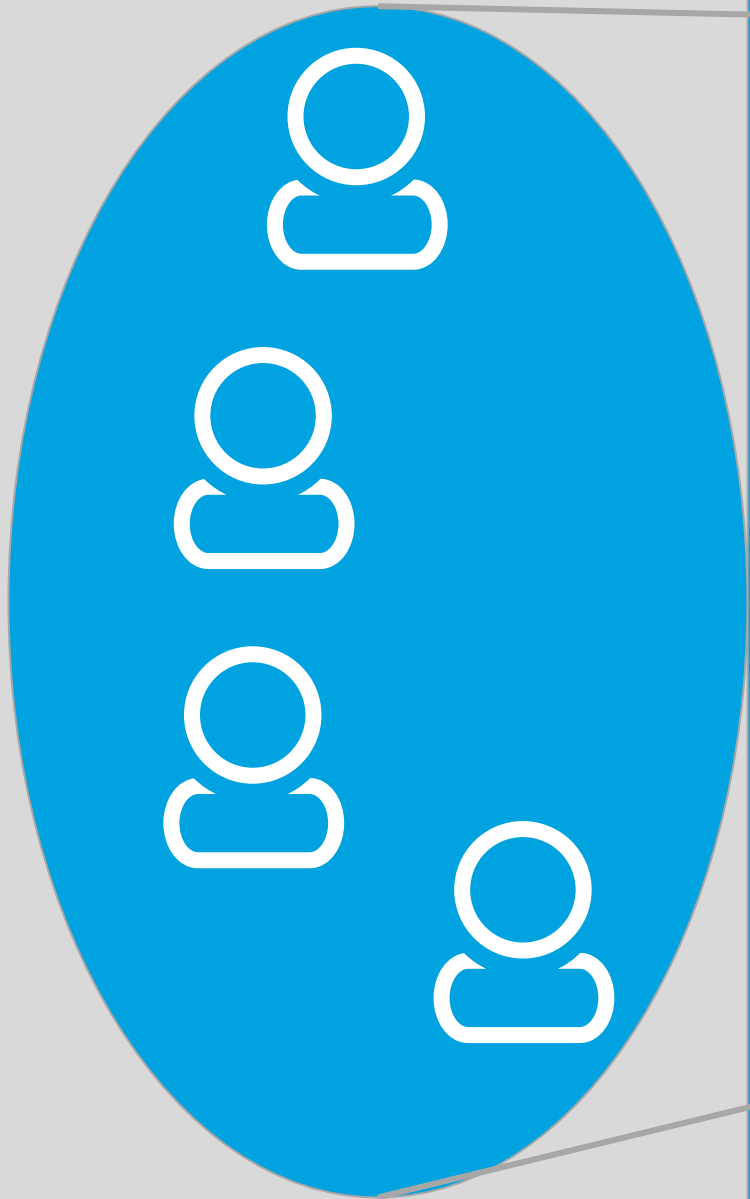


Librarians



Researchers

Civil Service



House of Commons

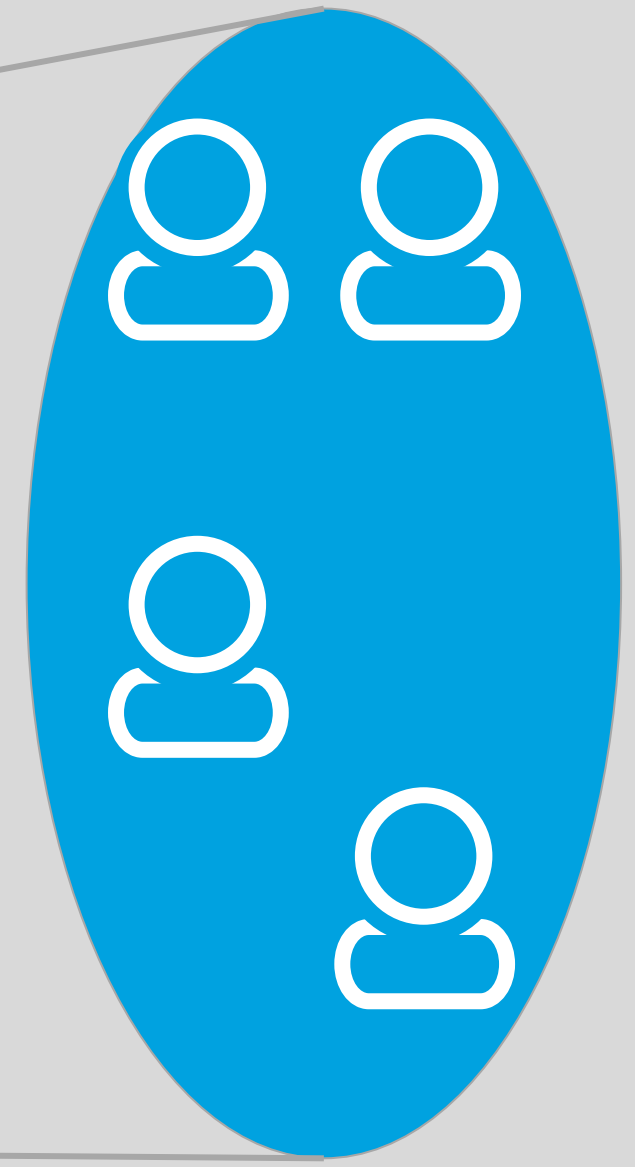


Ministers



Backbenchers and opposition

Library



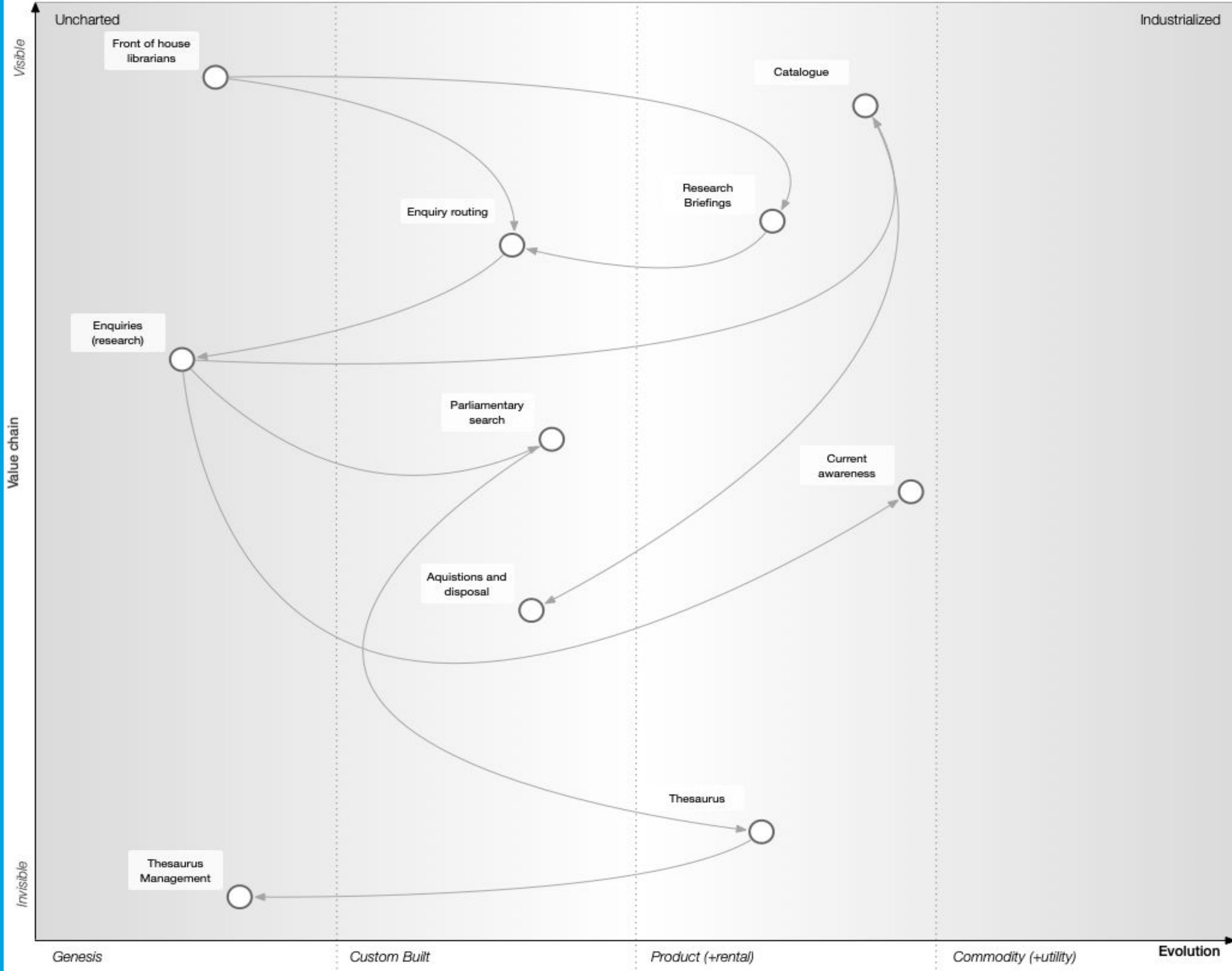
The nature of requests

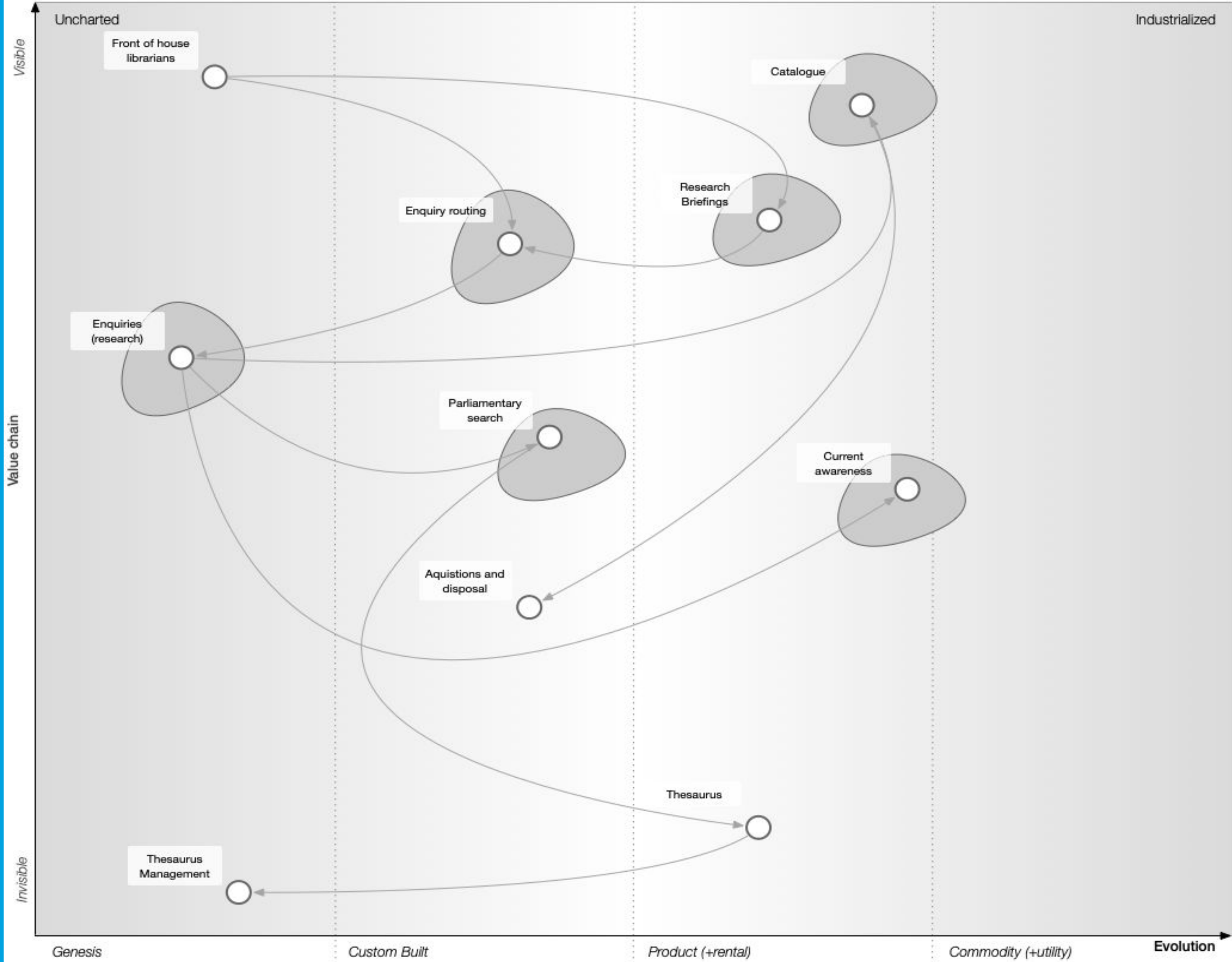
- Data on free school meals in my constituency.
- Likely impact of a tax policy?
- Housing vacancy in England and Wales?



The House of
Commons Library

(a Wardley map)





What is “the
Thesaurus”?



Why the Thesaurus?

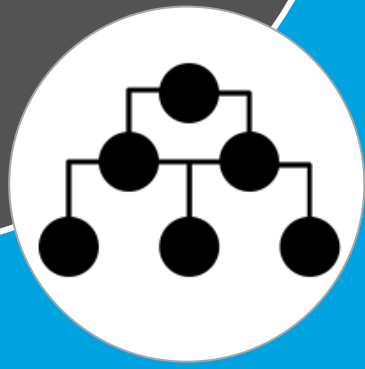
1. Stable identifiers
2. Synonyms
3. Hierarchy and transitivity
4. Responding to change

5. Librarians!

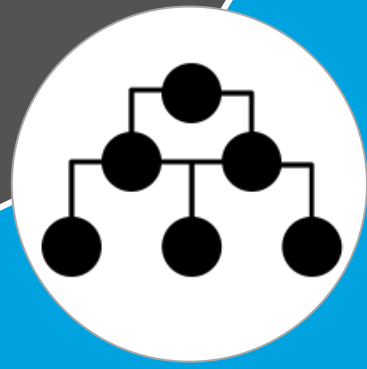


A single subject
view of the
Library

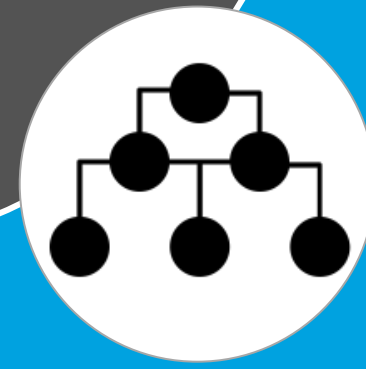
Specialist

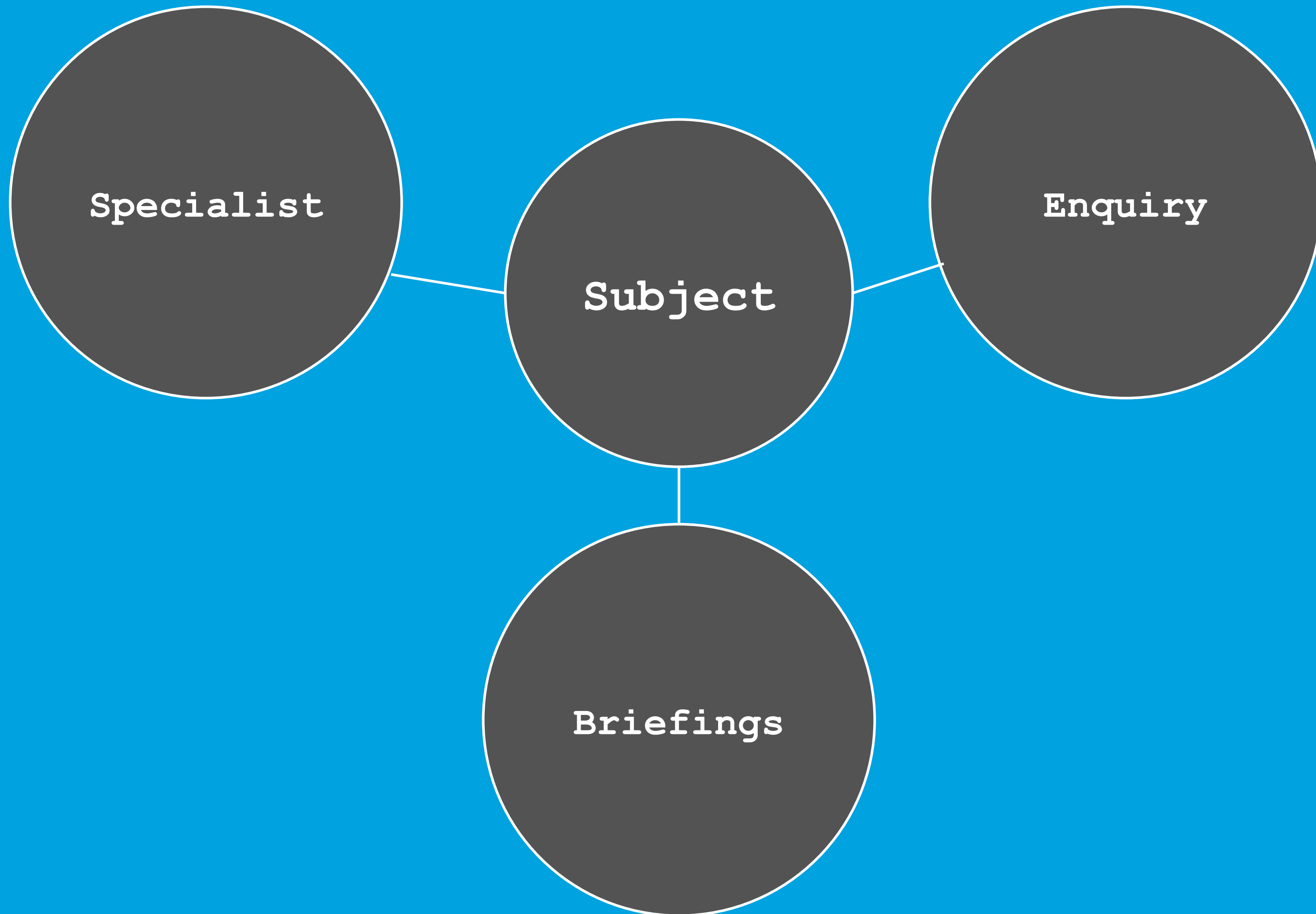


Briefings



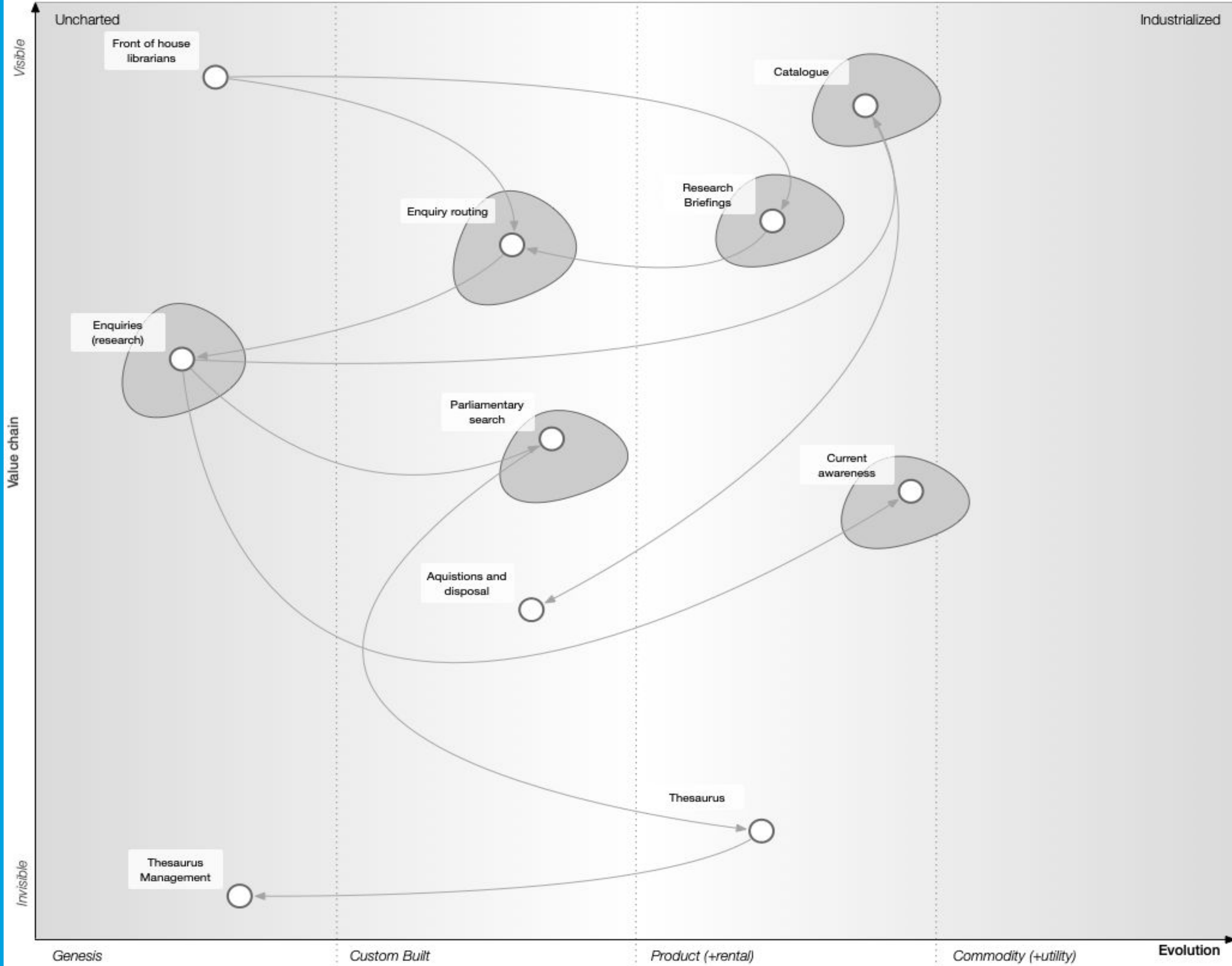
Enquiry



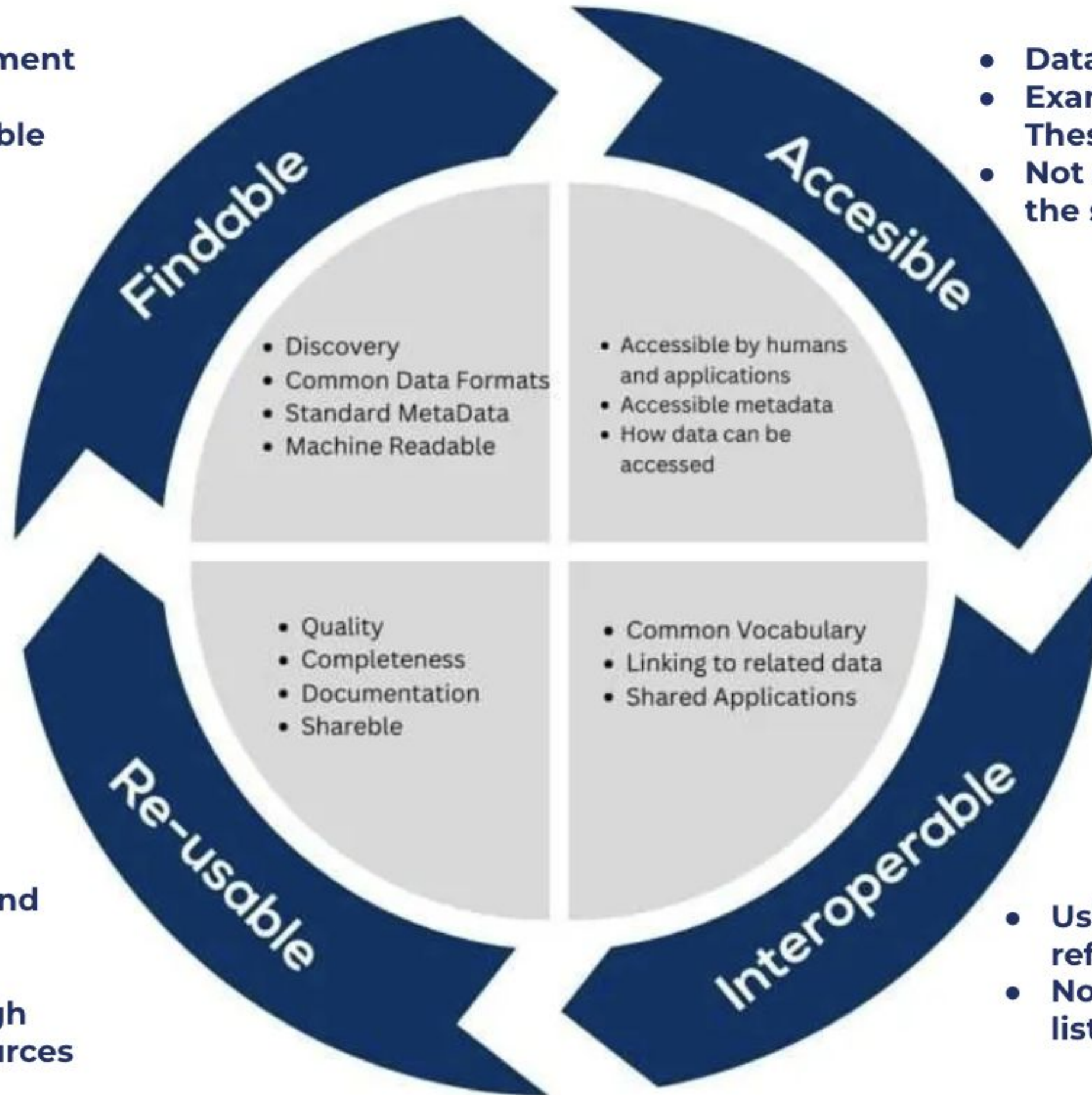


The approach

Domain-driven design +
information management =
Knowledge graph



- Common models (Parliament and public domain)
- Aspire to machine readable views of information

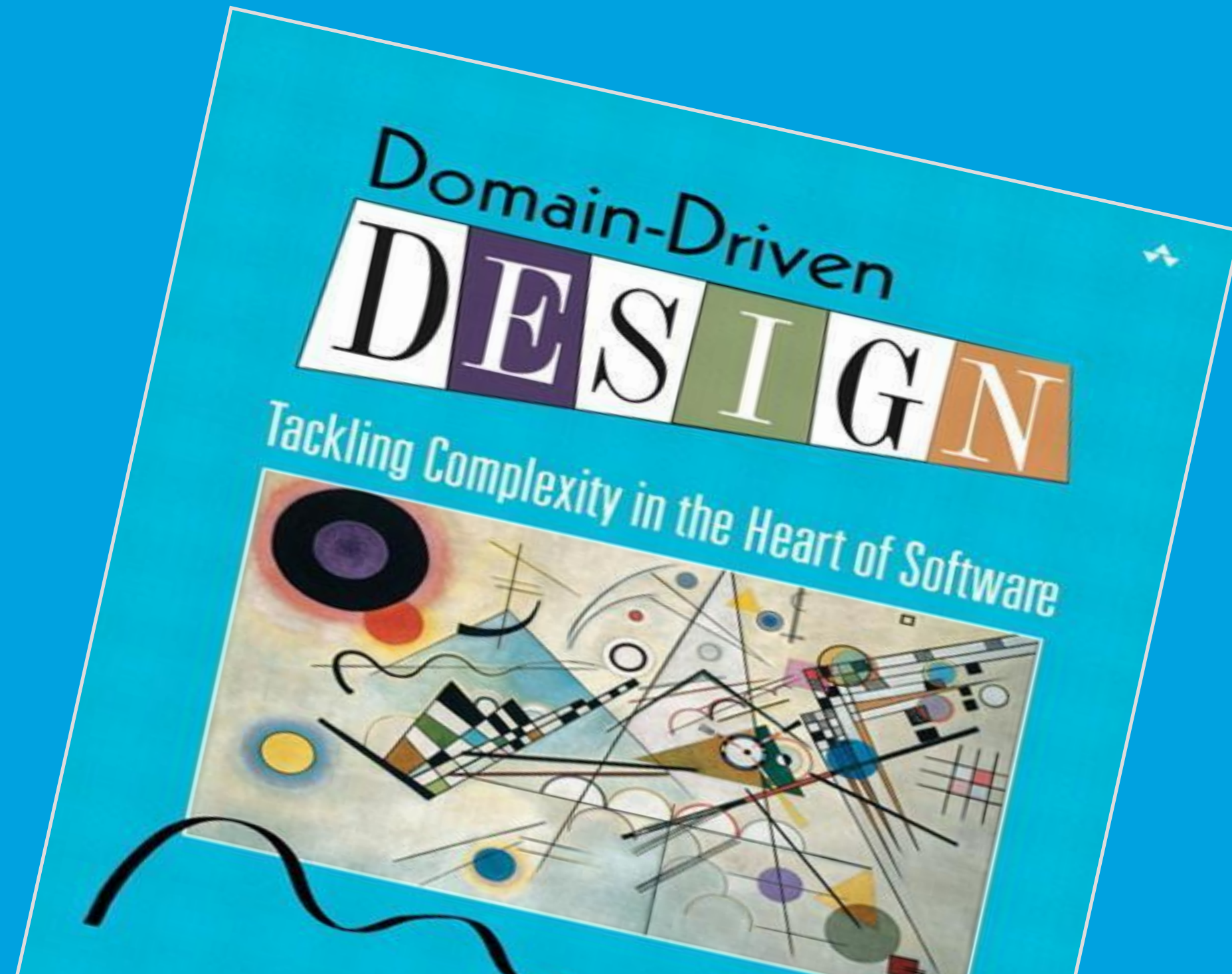


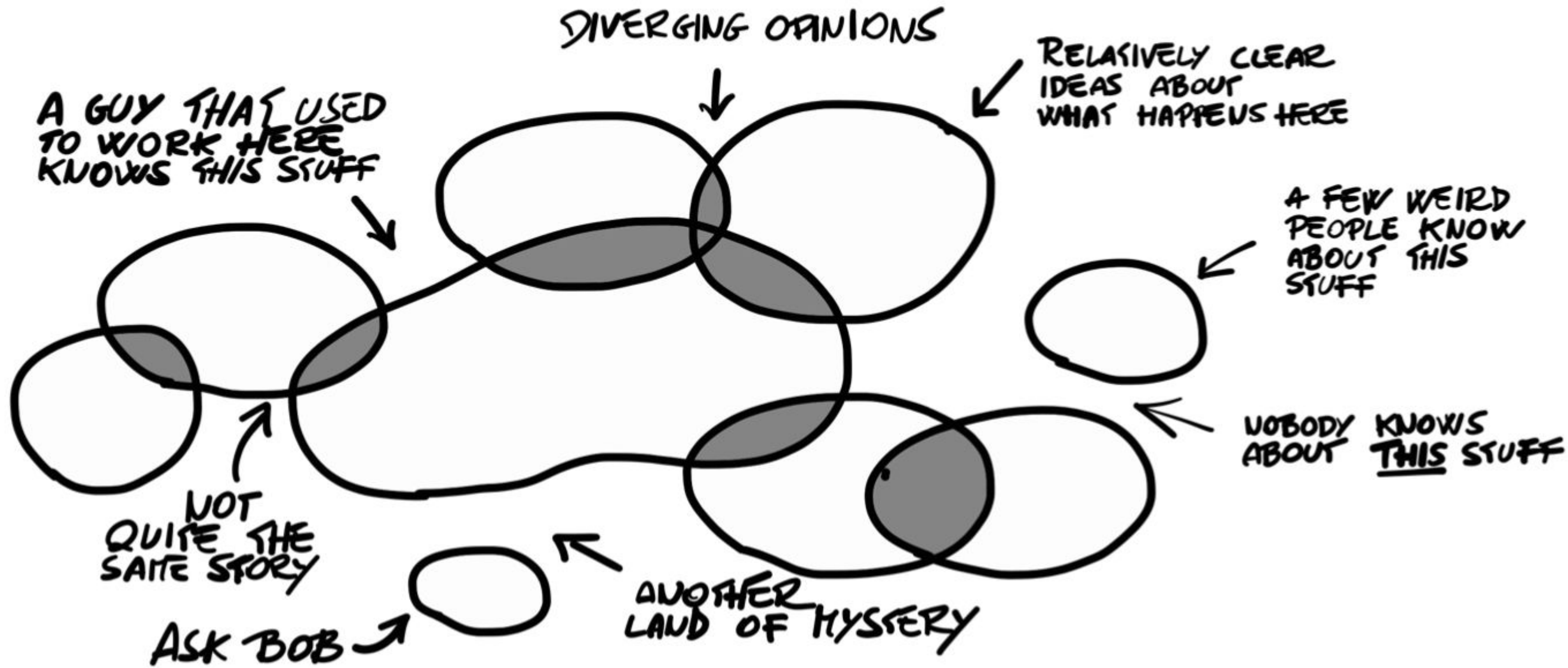
- Data available in easy to access API's
- Example of the Parliament Thesaurus
- Not data constrained to use within the service

- Model documentation and shared language for understanding data
- Data governance through having authoritative sources for data
- Fixing data in one place

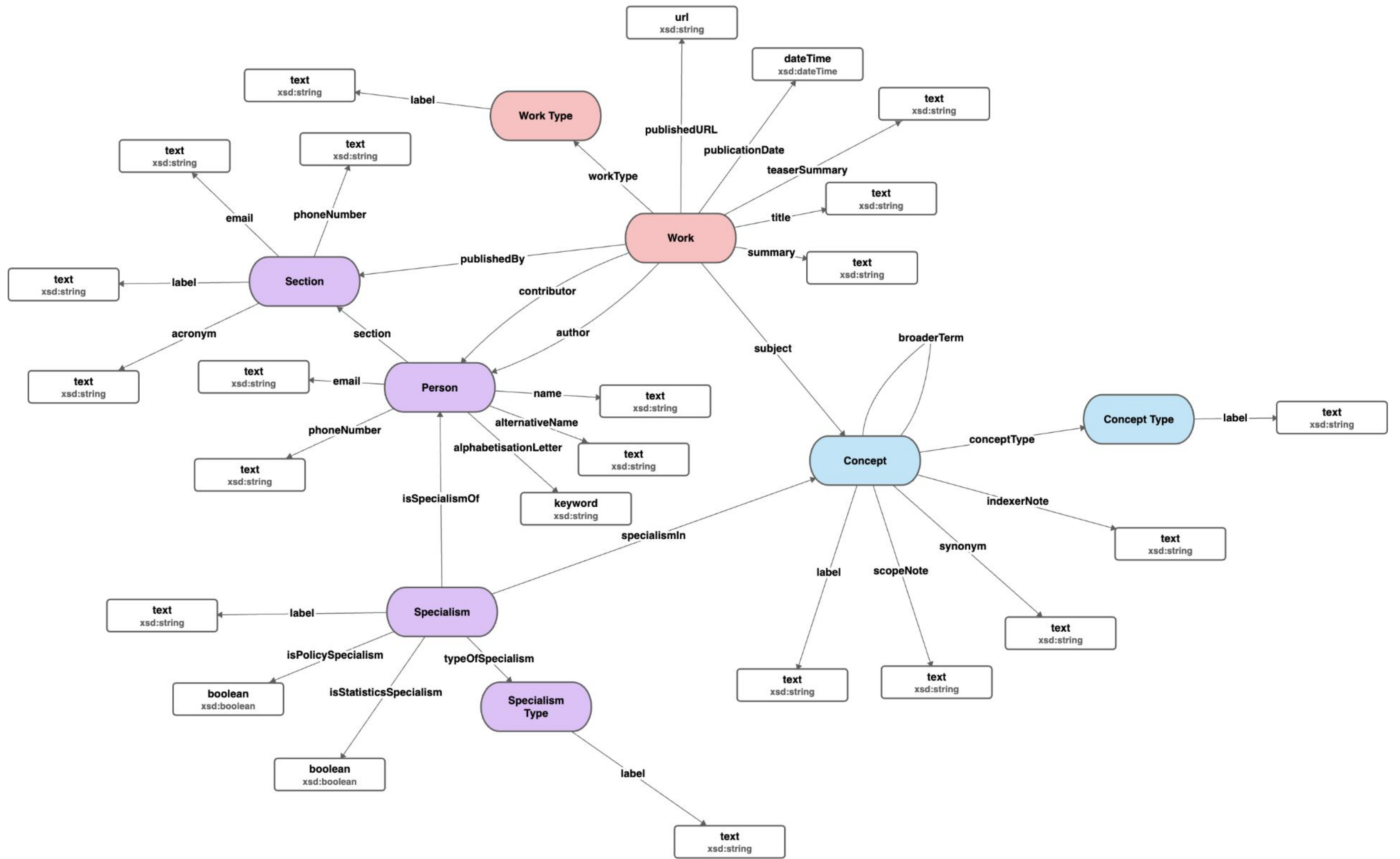
- Using the Thesaurus as common reference data
- Not forking it and inventing new lists

Domain-driven design





Alberto Brandolini





Dangerous|

Publication

Dangerous Dogs

Subject

Dangerous driving

Subject

Dangerous dogs

Subject

Dangerous psychiatric patients

House of Commons Library

[Specialists](#) [Sections](#) [Subjects](#)

Dangerous dogs

Synonyms: [Dogs in crime](#)

[Specialists \(0\)](#) [Publications \(0\)](#) [Parents \(1\)](#) [Siblings \(8\)](#) [Children \(0\)](#)

The Library has no specialists directly assigned to Dangerous dogs. These specialists are being suggested because of their expertise in [Animals](#):

Grahame Allen



Elena Ares



Paul Bolton

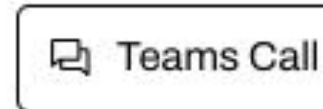
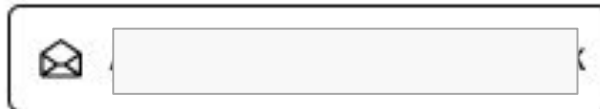


House of Commons Library

[Specialists](#) [Sections](#) [Subjects](#)

Social & General Statistics

Grahame Allen



[Specialisms \(96\)](#) [Publications \(72\)](#)

Adoption

 0

Age discrimination

 0

Agriculture

 0

Agriculture

Alternatives to prison

Alternatives to prison



- Today ▲
 - what are the legisaltion options for dealing wi... 13:38
 - how has policy changed to deal with new breeds ... 13:37
 - what are the policy options for reducing the im... 13:36
 - how does vacant housing increase the cost for n... 13:26
 - what policy changes could be used to reduce the... 12:11
 - how does vacant housing impact prices for first... 08:42
 - what are the potenital policy options to deal w... 08:12
- Yesterday ▲
 - what are the potenital impacts on small compani... 09:18
- Last Month ▼
- Older ▼

Placeholder content for the Graph AI interface.

Ask me anything about your data ↑

Outcome

- Making the mess more explicit and understood
- Less patching data at the end of data journey
- More meaningful work rather than fire fighting
- More accountability and control in the same place
- Less systems forking reference data (infrastructure is fit for purpose)
- Less time and cost to build out features

See Also

- **Weeknotes:**

<https://ukparliament.github.io/ontologies/meta/weeknotes/>

- **Parliament models:**

<https://ukparliament.github.io/ontologies/>

- **How we make websites:**

http://www.bbc.co.uk/blogs/radiolabs/2009/01/how_we_make_websites.shtml

- **Domain driven design for information professionals:**

<https://datalanguage.com/blog>