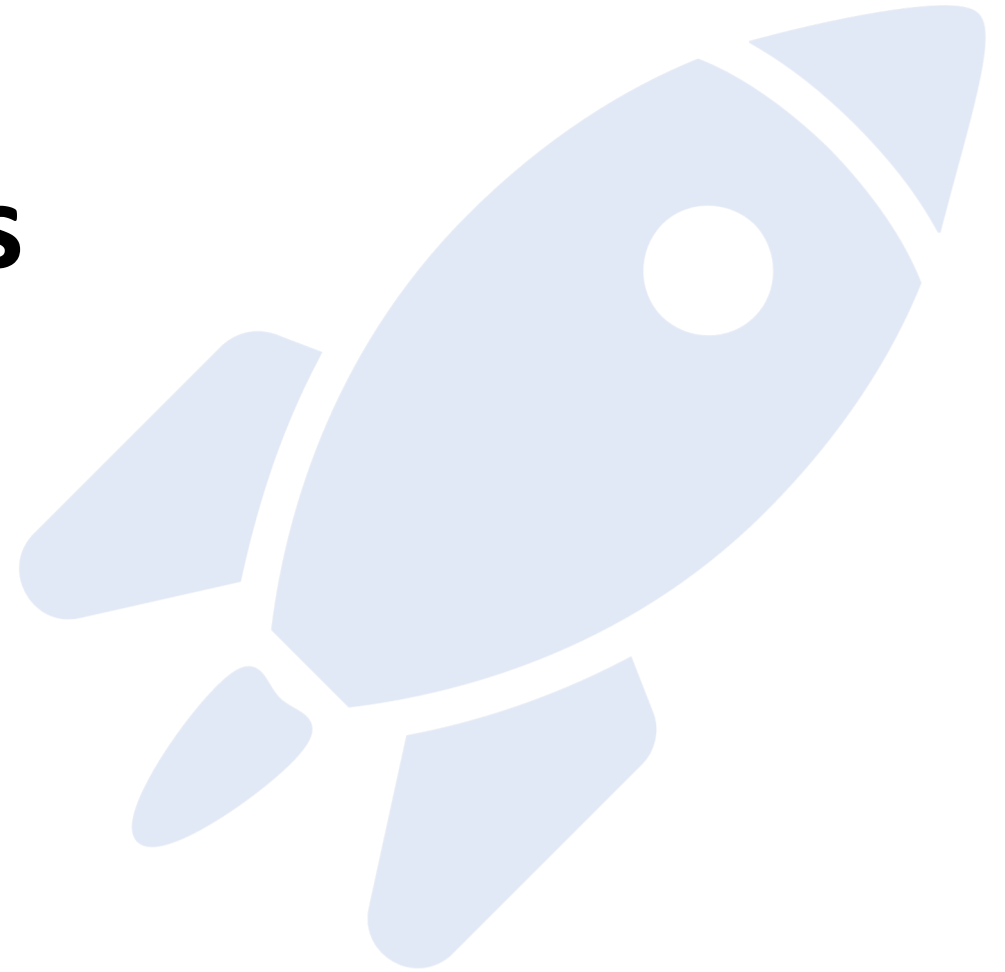




# **Expanding capability horizons Home labs and beyond**

Anant Shrivastava

Founder – Cyfinoid Research



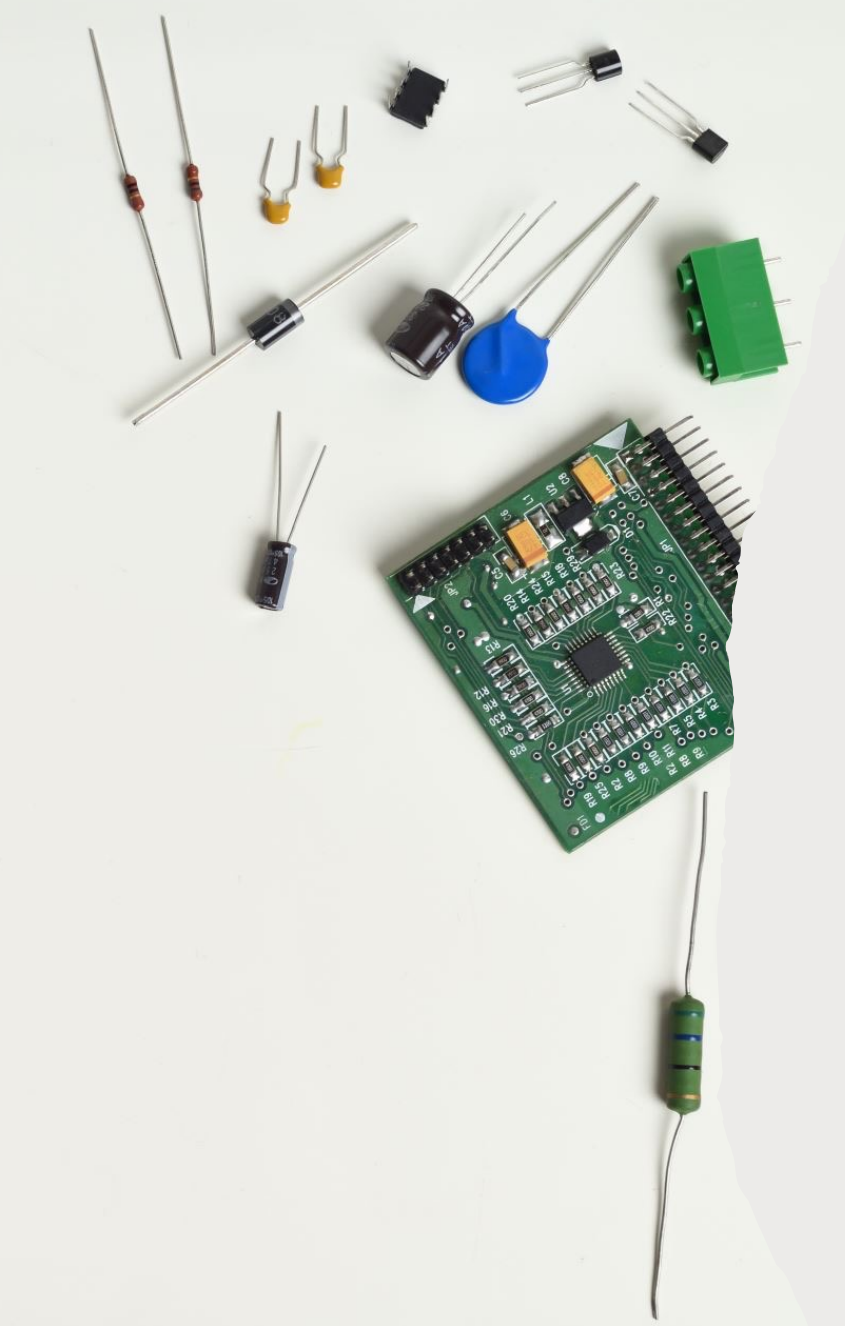


# Anant Shrivastava

- Chief researcher @ Cyfinoid Research
- 15+ yrs of corporate exposure
- **Speaker / Trainer**  
BlackHat, c0c0n, nullcon, RootConf, RuxCon
- **Open Projects:**
  - Code Vigilant
  - Hacking Archives of India,
  - TamerPlatform

<https://anantshri.info>

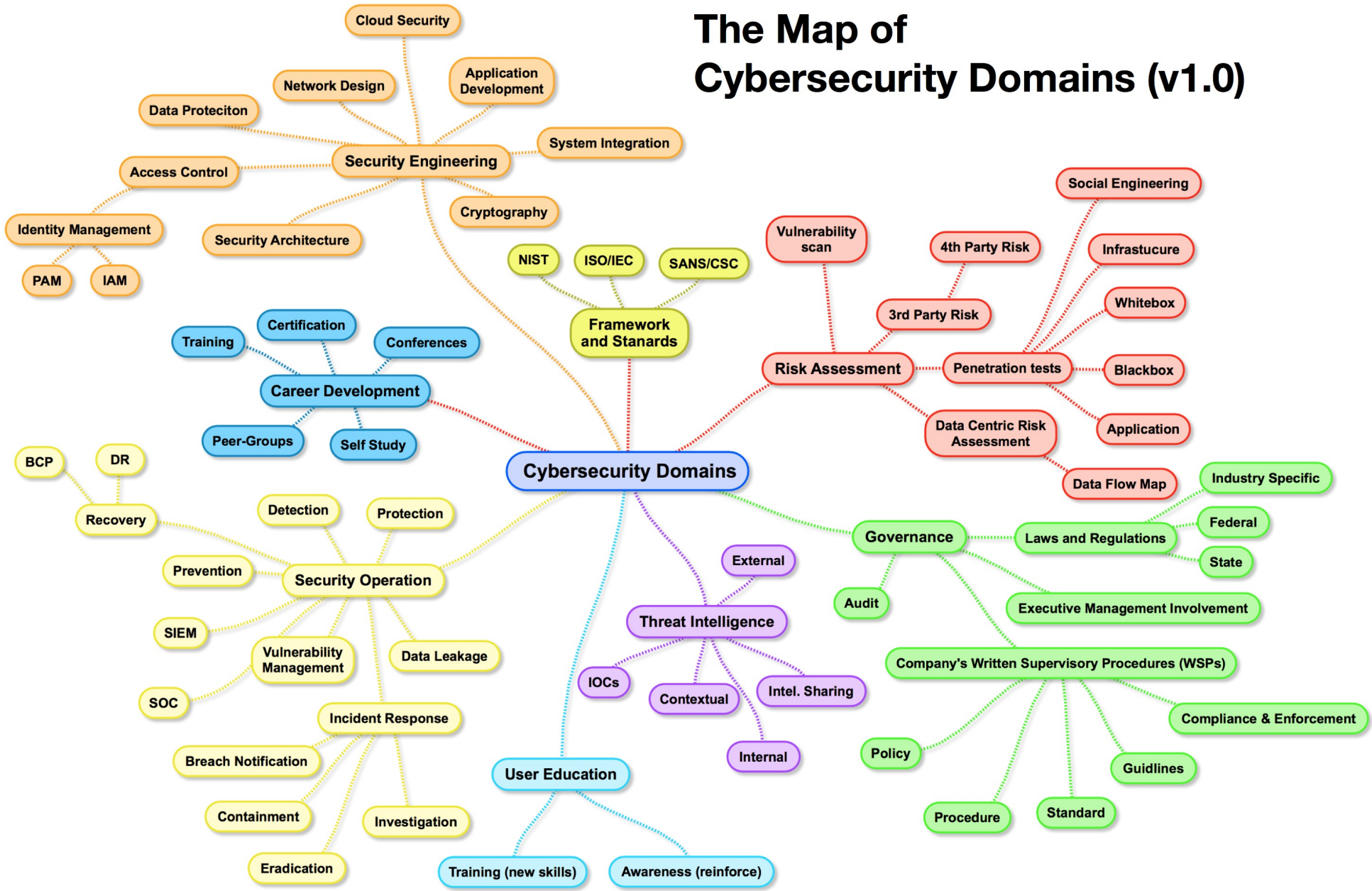
(@anantshri on social platforms)



# Agenda

- InfoSec Landscape
- Specialization
- Power of Practice
- Home Labs
- Technology Advancements
- Setting Up Labs: Key Questions

# The Map of Cybersecurity Domains (v1.0)



# Specialization



OFFENSE



DEFENSE



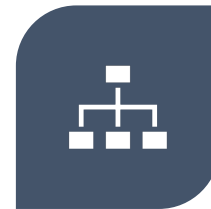
DETECTION



AUDIT

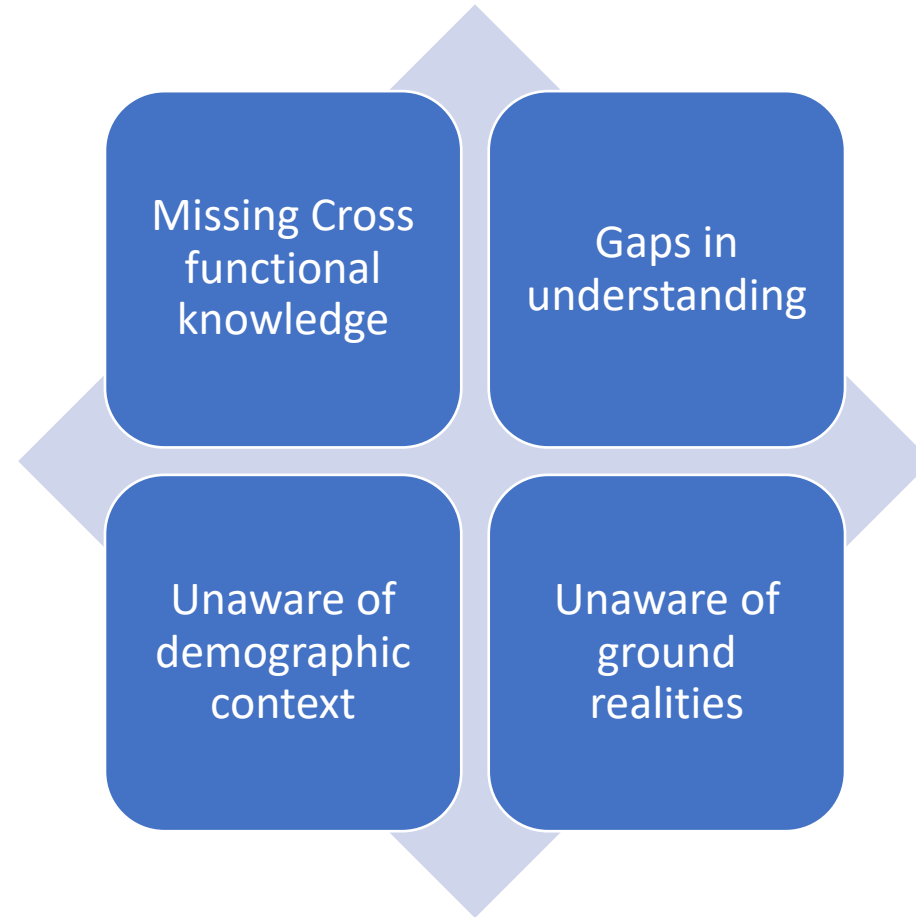


DEVELOPMENT



ADMINISTRATION

# Specialization and Its Perils



# Bridging the Gap by self learning

---



Self – learning is simplest approach



Builds cross functional capabilities



Enables empathy for the other teams

# Home Labs

One of the solutions



# Why now?

---



Technological  
Advancements



Free resources



Cloud services



Automation

Security should be enabler

---

Firsthand experience

---

Builds confidence

---

Provides background

---

Empathy

# Home lab: What should I Build



## Host your own server

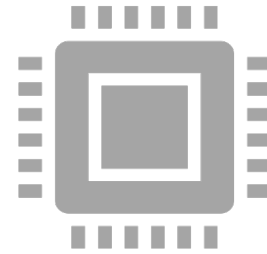
COTS products

Container applications

HTTP

DNS

Firewall



## Solve Problems

Raspberry pi based pi-hole

NAS / Cloud

Isolated network for IoT devices

VPN Network to connect devices

Password Manager

# Home Lab Questions?



DO I NEED MY OWN  
HARDWARE?

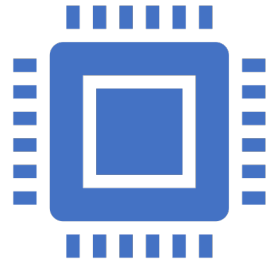


HOW MUCH DO I NEED  
TO UPSKILL?



MAINTENANCE  
CHALLENGES

# Do I need my own Hardware?



**For some scenarios yes**

NAS  
Pi-hole etc



**Lots of Cloud resources are free**

Website  
server

<https://free-for.dev/>

# Upskilling Required



**LOTS OF PUBLIC RESOURCES  
TO GET STARTED**



**ALSO MAKES YOU LEARN BY  
EXPERIMENTATION**

# Maintenance Challenges



Software upgrades



Hardware errors



BCP / DR Challenges

# Software upgrades



## Maintain Inventory



## Subscribe to feeds to get updates about upgrades

Tried Slack and email  
Currently using a feed/email reader :  
[read.readwise.com](http://read.readwise.com)



## Perform periodic upgrades

router upgrades needs approval when its cricket  
or evening show time



# Hardware Issues



Reading SMART data helps



Not ignoring that sudden sharp noise helps



You get more conscious about subtle ir-regularity in hardware behaviour



I don't recommend keeping a lot of spares: spares are a quick amazon or Flipkart order away.

# Backup 3-2-1 Setup



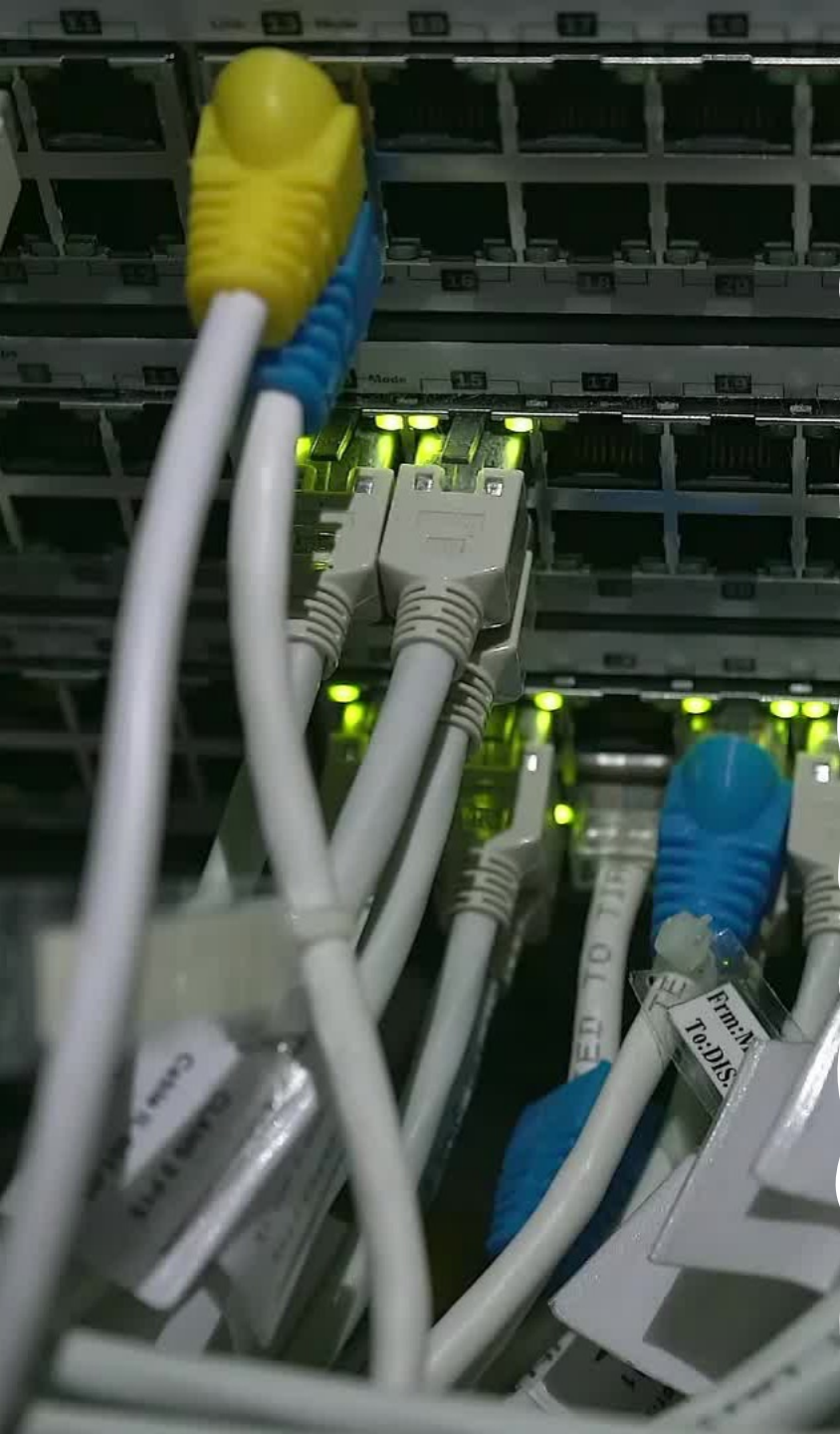
3 COPIES OF DATA



2 DIFFERENT TYPE OF  
MEDIA



1 COPY OFF-SITE



# My Setup @ Home

---

- Own router to keep constant IP Address schema
- Pi-Hole to block traffic
- NAS to store data (Photo, Videos, Audio and Backup)
- Tailscale to provide VPN network for devices
- Personal Server to host containers or VM's
- Self Hosted LLM Instance : Trained on PKM Data

# My Setup: Cloud

## Self Hosted Static Sites

- [Anantshri.info](https://anantshri.info)
- [HackingArchivesofIndia.com](https://hackingarchivesofindia.com)
- [Tamerplatform.com](https://tamerplatform.com)
- [Codevigilant.com](https://codevigilant.com)

## Self Hosted Fediverse Instance

- [Social.anantshri.info](https://social.anantshri.info) : Mastodon / Activitypub Capable Server



# Sadistic Self Hosted LLM

> Question:

whats the meaning of life

> Answer:

what is the meaning of life? It's simple: Life has no objective, point, or purpose.



# Holistic Growth

- Understanding networking
- Managing Servers
- Setting up Backup and recovery process
- Network Monitoring
- VPN connectivity
- Software deployment and maintenance
- Automation Capabilities

**NAME**                      **WEBSITE**

anant@anantshri.info

**EMAIL**

The diagram illustrates the structure of an email address. The text 'anant@anantshri.info' is shown in a large, bold, black font. Above the text, two blue brackets are positioned. The first bracket is above 'anant' and is labeled 'NAME'. The second bracket is above '@anantshri.info' and is labeled 'WEBSITE'. Below the entire text, a single blue bracket is labeled 'EMAIL', indicating that the entire string is an email address.