

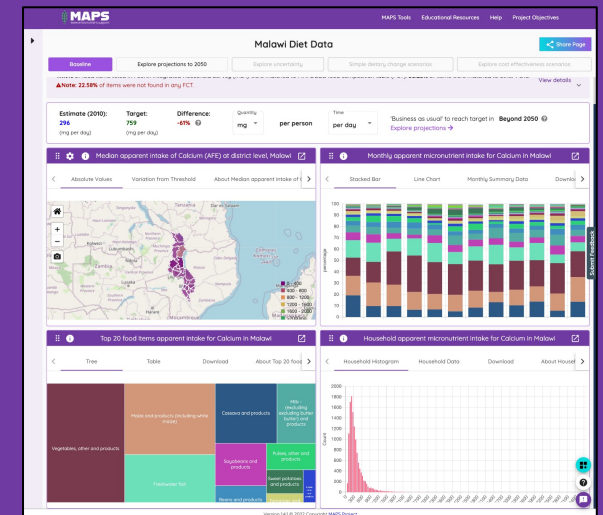


Andrew Bean
British Geological Survey, UK
andy@micronutrient.support



Micronutrient Action Policy Support

A decision support tool for investigating the scale and geographic distribution of micronutrient availability in sub-Saharan Africa





SUSTAINABLE DEVELOPMENT GOALS





SUSTAINABLE DEVELOPMENT GOALS

1 NO POVERTY



2 ZERO HUNGER



3 GOOD HEALTH AND WELL-BEING



4 QUALITY EDUCATION



5 GENDER EQUALITY



6 CLEAN WATER AND SANITATION



7 AFFORDABLE AND CLEAN ENERGY



8 DECENT WORK AND ECONOMIC GROWTH



9 INDUSTRY, INNOVATION AND INFRASTRUCTURE



10 REDUCED INEQUALITIES



11 SUSTAINABLE CITIES AND COMMUNITIES



12 RESPONSIBLE CONSUMPTION AND PRODUCTION



13 CLIMATE ACTION



14 LIFE BELOW WATER



15 LIFE ON LAND

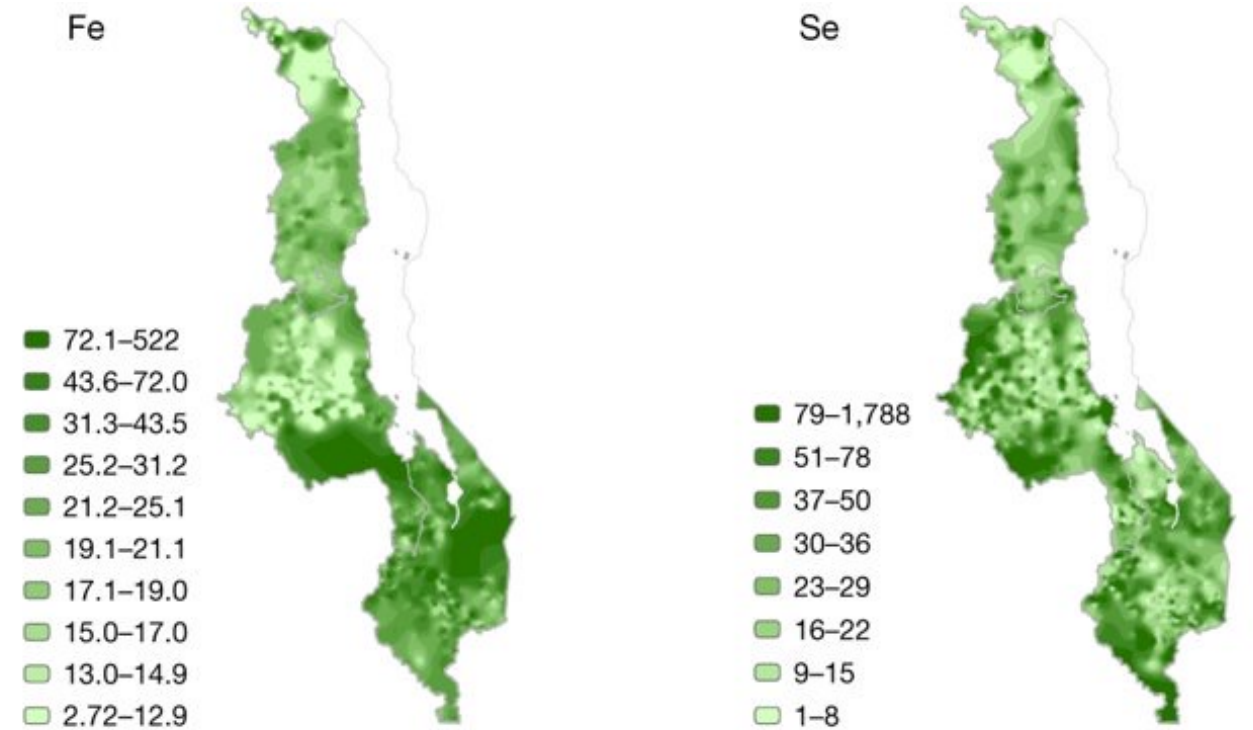


16 PEACE, JUSTICE AND STRONG INSTITUTIONS



17 PARTNERSHIPS FOR THE GOALS





Gashu, D et al. (2021) *The nutritional quality of cereals varies geospatially in Ethiopia and Malawi*. Nature 594:71–76

Data

Data

Data

Food Composition

Food Consumption
(24hr recall)

National level food
balance sheet

Data

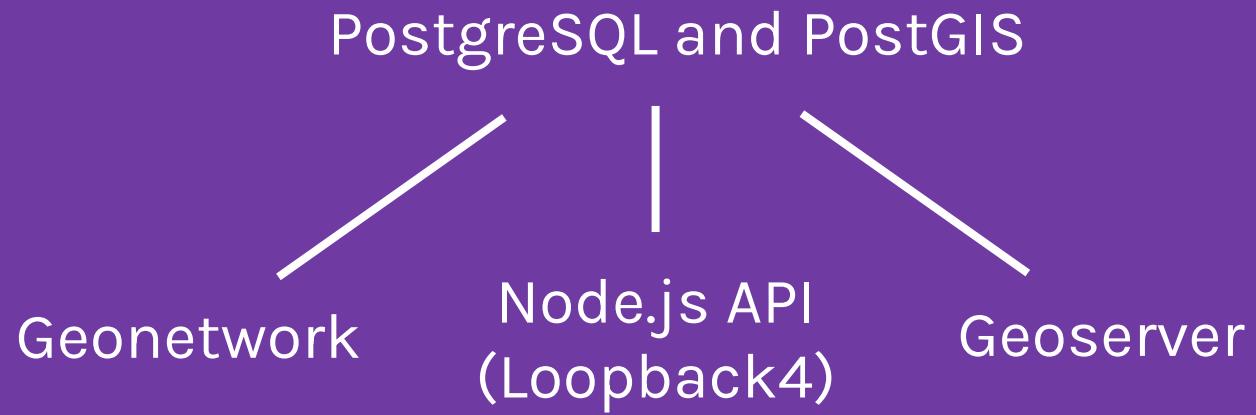
Biomarker
measurements

Population data
Regional
boundaries
Road networks

Projected future
micronutrient
availability

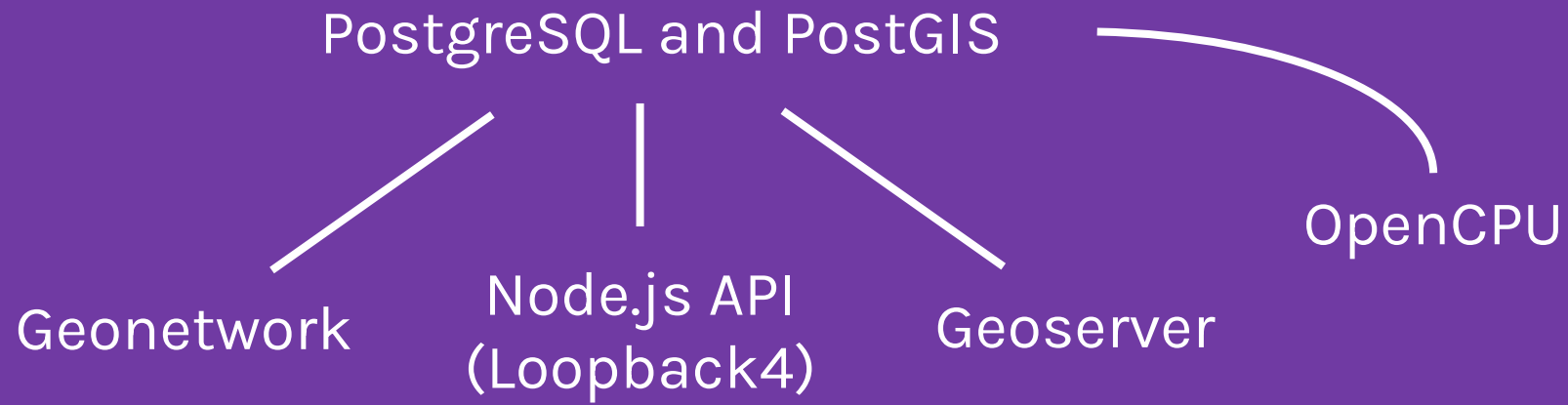
OS Software

OS Software



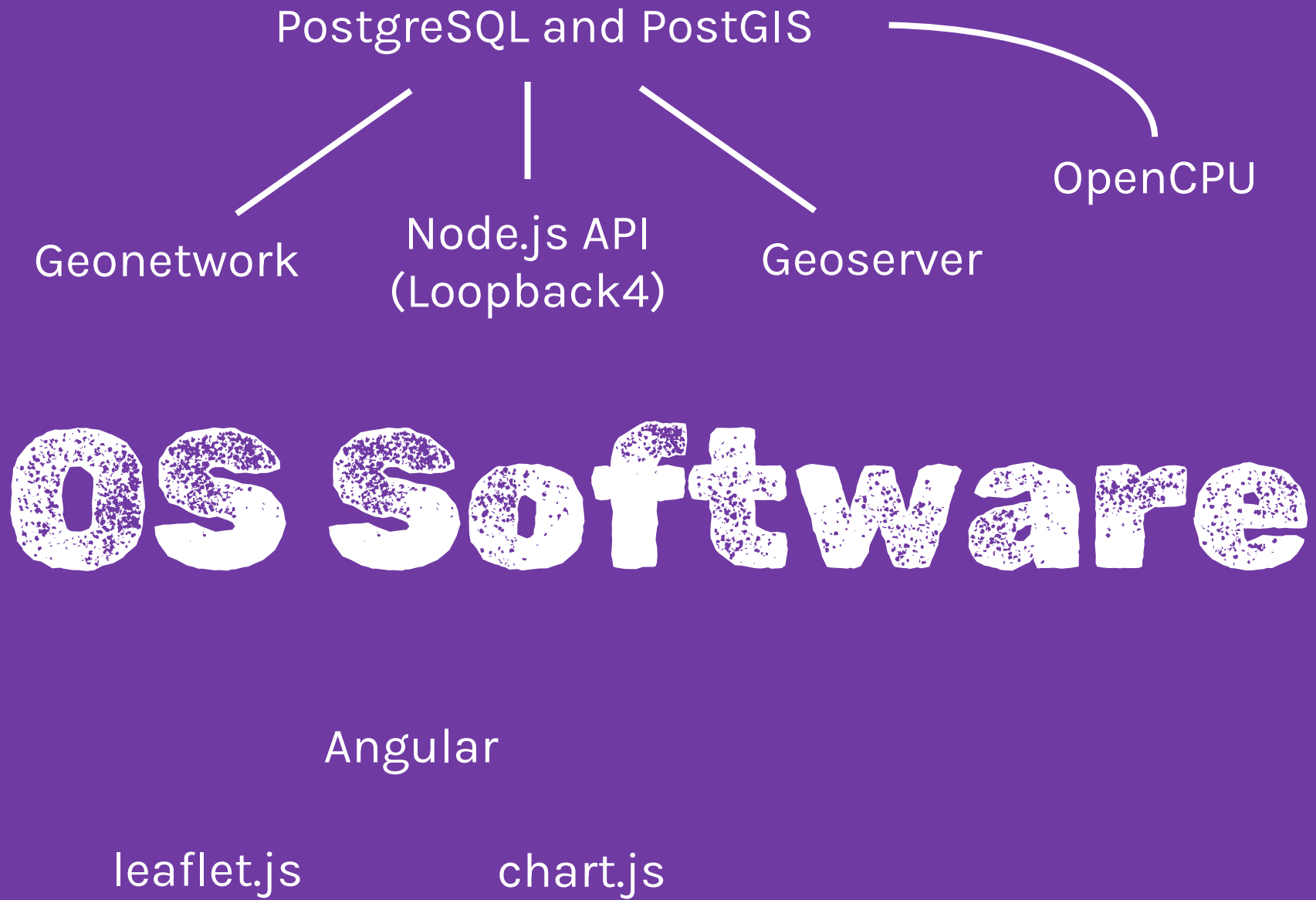
OS Software

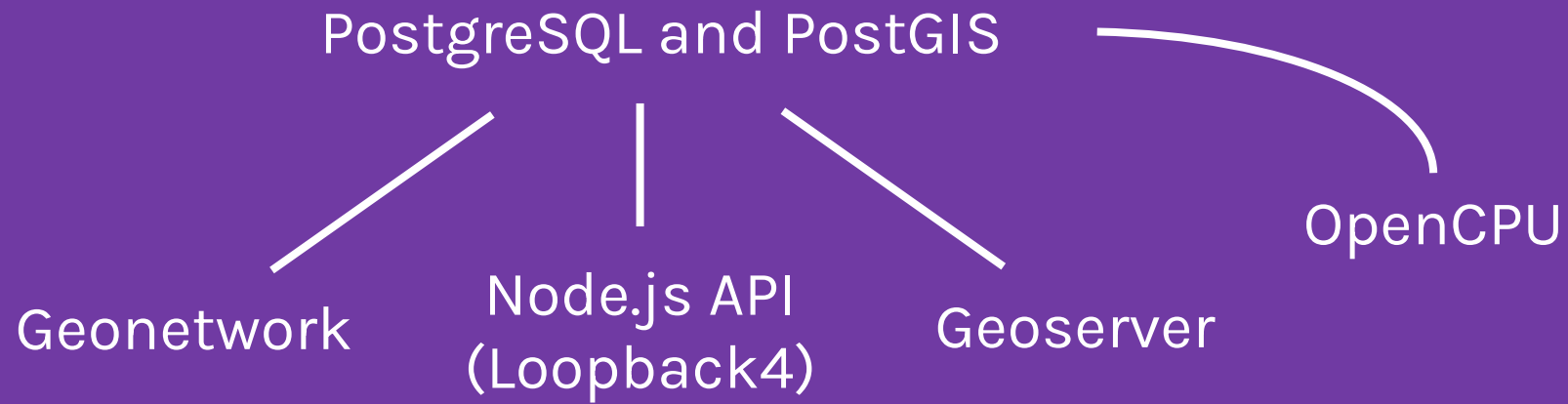
OS Software



OS Software

OS Software





OS Software

Angular

leaflet.js

chart.js

fider

unleash

plausible



 github.com/micronutrientsupport

Angular

leaflet.js

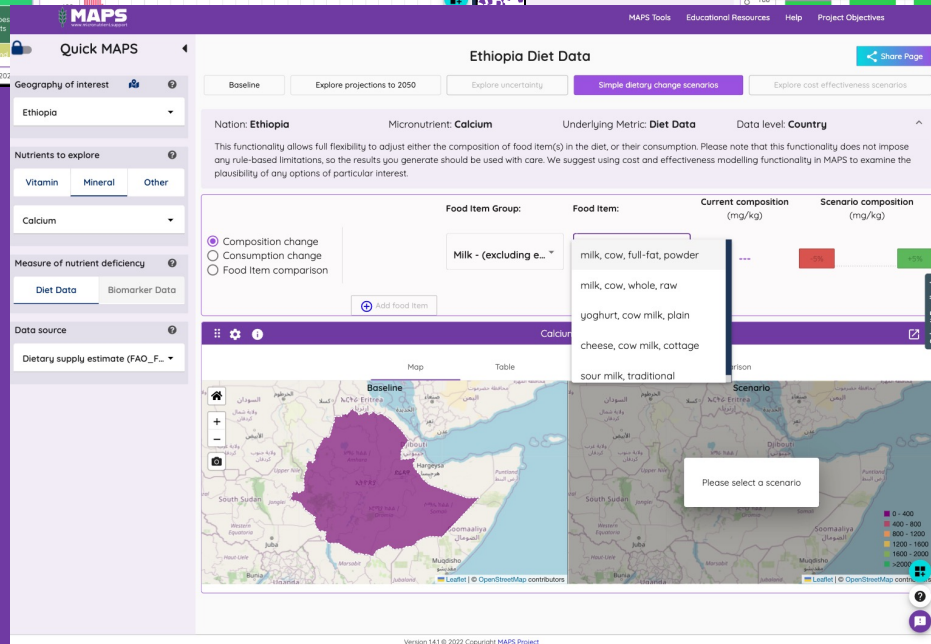
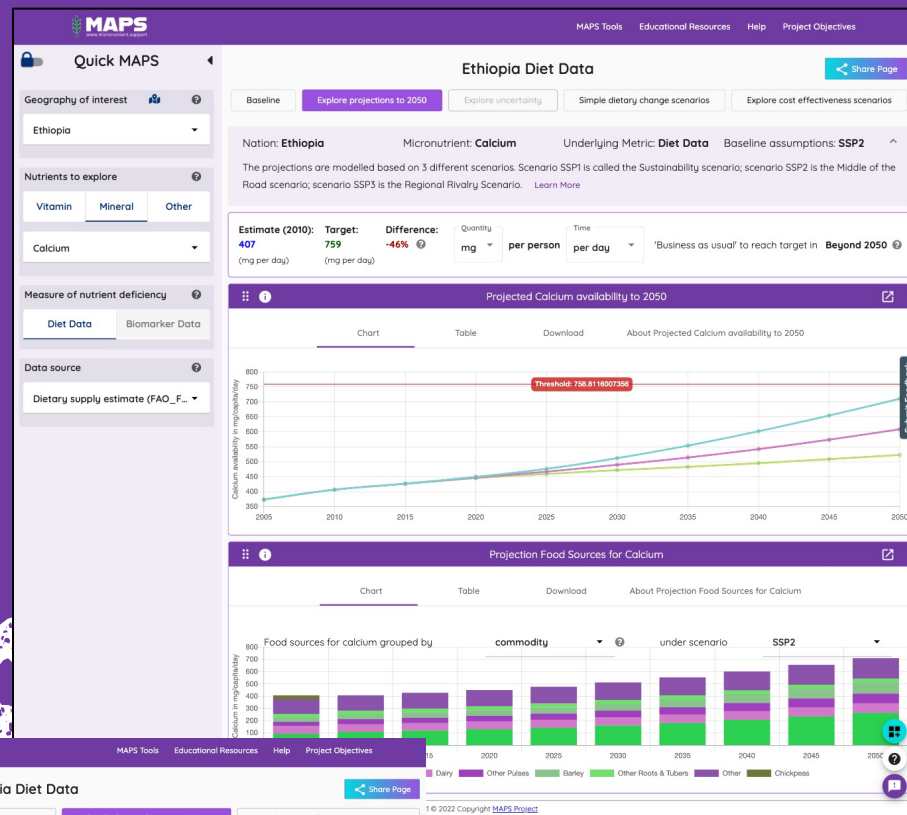
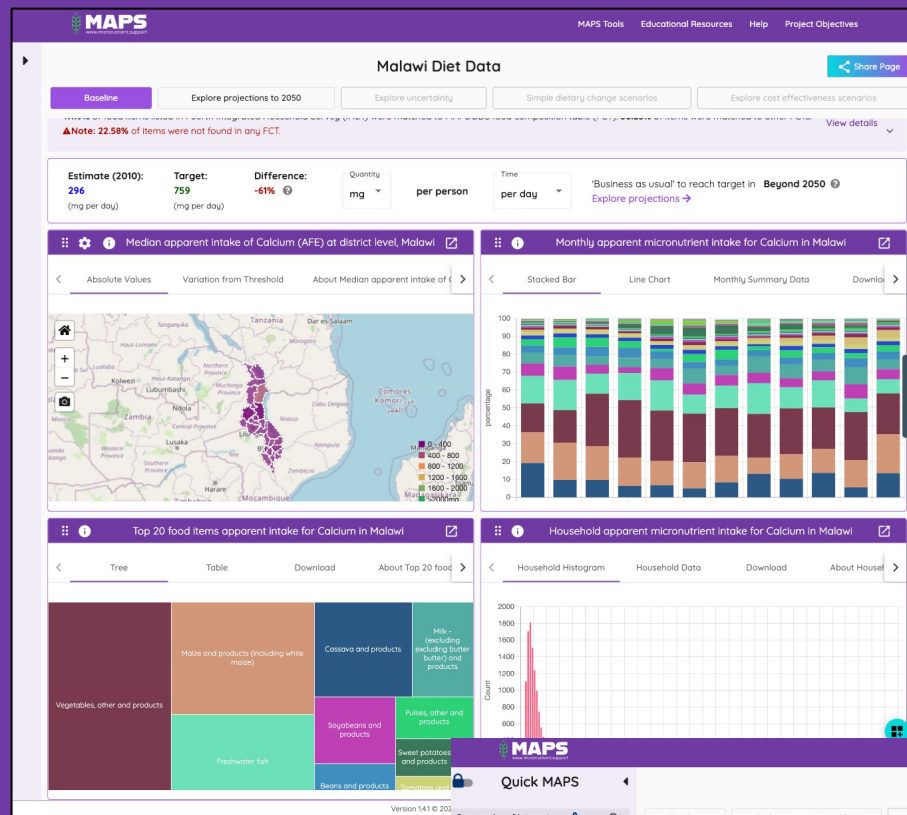
chart.js

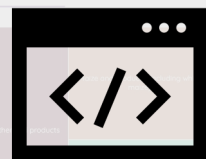
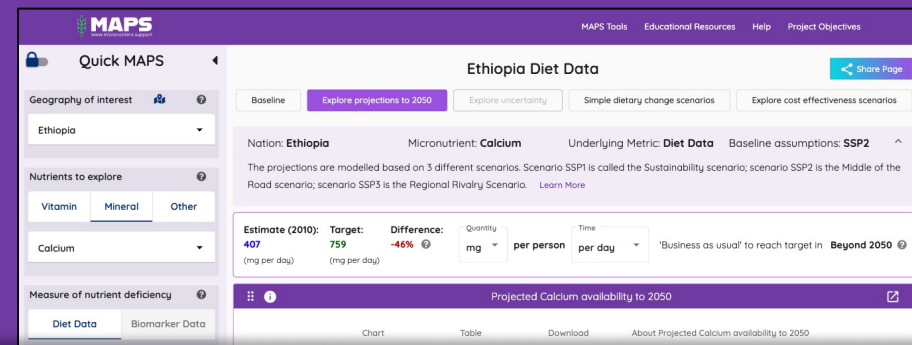
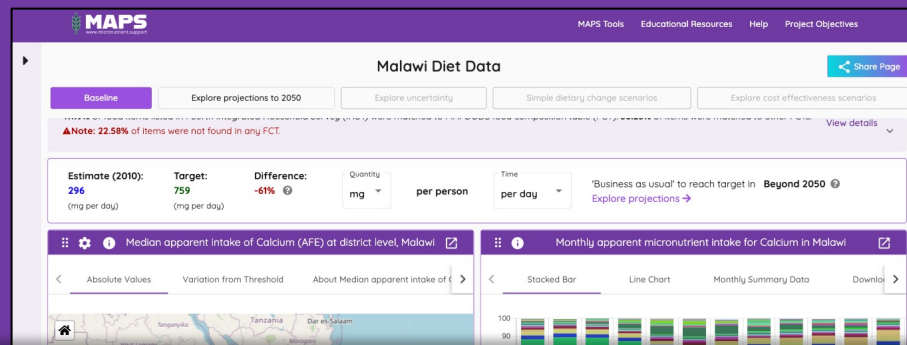
fider

unleash

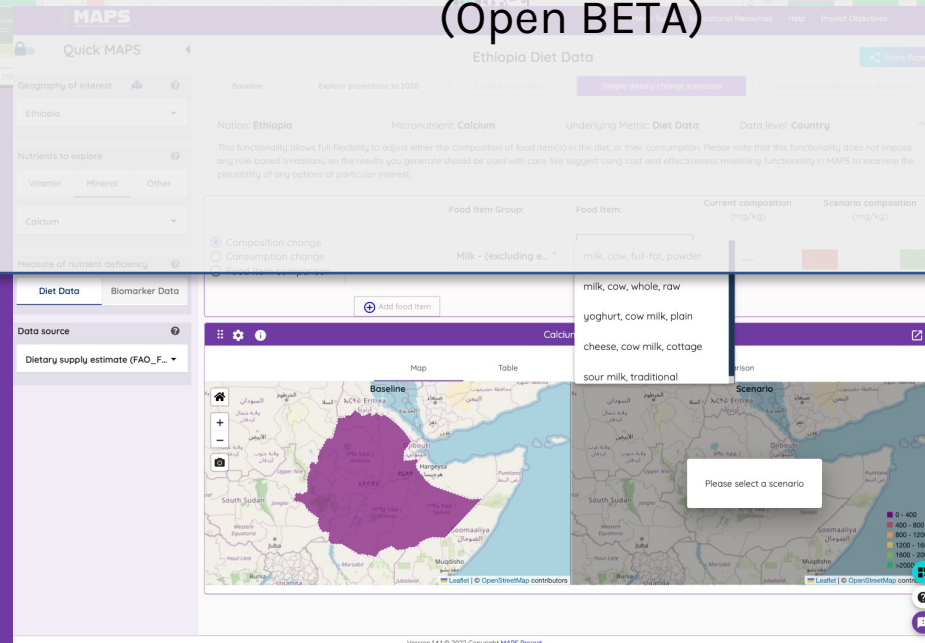
plausible

Outputs





<https://preview.micronutrient.support>
(Open BETA)



Core Data API

API ReferenceGuides

Diet data

Biomarker data

Future dietary supply projections

Geographies

Micronutrients

OpenAPI specification

MAPS

Core Data API reference

The core data API contains all methods to access the MAPS tool data used within the Quick MAPS interface

Diet data

Data relating to the dietary consumption and composition of foods

Operation	HTTP Request	Description
get	GET /diet/data-sources	Get diet data sources by country
get	GET /diet/household/availability	Get dietary MN availability by household
get	GET /diet/country/top-foods	Get the top contributing food items (country level)
get	GET /diet/household/top-foods	Get the top contributing food items (household level)

Biomarker data

Data relating to direct measurement of biomarkers

Operation	HTTP Request	Description
get	GET /biomarker/data-sources	Get biomarker data sources by country

Future dietary supply projections

Projections of future dietary supply provided by the IFPRI IMPACT Model

Operation	HTTP Request	Description
get	GET /diet/projections/commodities	Get micronutrient breakdown by commodity
get	GET /diet/projections/food-groups	Get micronutrient breakdown by food group
get	GET /diet/projections/scenarios	Get projection scenarios
get	GET /diet/projections/summaries	Get projection summaries
get	GET /diet/projections/totals	Get total micronutrient availability

Geographies

Data relating geographic boundaries and areas

Operation	HTTP Request	Description
get	GET /countries	Get country geometries

Micronutrients

Data relating to

Operation	HTTP Request	Description
get	GET /micronutrients	Get Micronutrients

For terms of use, please visit <https://data.micronutrient.support>

MAPS

Core Data API reference

The core data API contains all methods to access the MAPS tool data used within the Quick MAPS interface

Diet data

Data relating to the dietary consumption and composition of foods

Operation	HTTP Request	Description
get	GET /diet/data-sources	Get diet data sources by country
get	GET /diet/household/availability	Get dietary MN availability by household
get	GET /diet/country/top-foods	Get the top contributing food items (country level)
get	GET /diet/household/top-foods	Get the top contributing food items (household level)

Biomarker data

Data relating to direct measurement of biomarkers

Operation	HTTP Request	Description
get	GET /biomarker/data-sources	Get biomarker data sources by country

Future dietary supply projections

Projections of future dietary supply provided by the IFPRI IMPACT Model

Operation	HTTP Request	Description
get	GET /diet/projections/commodities	Get micronutrient breakdown by commodity
get	GET /diet/projections/food-groups	Get micronutrient breakdown by food group
get	GET /diet/projections/scenarios	Get projection scenarios
get	GET /diet/projections/summaries	Get projection summaries
get	GET /diet/projections/totals	Get total micronutrient availability

Geographies

Data relating geographic boundaries and areas

Operation	HTTP Request	Description
get	GET /countries	Get country geometries

Micronutrients

Data relating to

Operation	HTTP Request	Description
get	GET /micronutrients	Get Micronutrients

For terms of use, please visit <https://data.micronutrient.support>

© Micronutrient Action Policy Support

Untitled Project - QGIS

Vector

Raster

Mesh

Delimited Text

GeoPackage

Spatialite

PostgreSQL

MSSQL

DB2

Virtual Layer

WMS / WMTS

WCS

WFS / OGC

API - Feature

ArcGIS

Data Source Manager | WMS/WMTS

LayersLayer OrderTilesetsServer Search

MAPS data

ConnectNewEditRemove

ID	Name	Title	Abstract
----	------	-------	----------

Image Encoding

Options

Tile size

Request step size

Feature limit for GetFeatureInfo

EPSG:3857 - WGS 84 / Pseudo-Mercator

Use contextual WMS Legend

MAPS Metadata Catalogue

Search

Map

Contribute

Admin console

admin admin ADMINISTRATOR

English

Search ...

Search 13 data sets, services and maps, ...

Browse by Topics

Boundaries7

Inland waters1

Health2

Biota1

Geoscientific information1

Oceans1

Browse resources

Dataset11

Service1

service-ISO 23950 gateway1

Collection session1

Latest news

Most popular

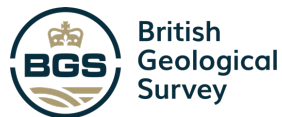
Comments

Ethiopia - Subnational Administrative Divisions

Ethiopian National Micronutrient Survey

Malawi Fourth Integrated Household Survey 2...

ICA Malawi - Second-level Administrative Bou...



Andrew Bean

Project Partners



*Funded by the Bill & Melinda
Gates Foundation*

Find out more



www.micronutrient.support



andy@micronutrient.support



[@mnd_support](https://twitter.com/mnd_support)

Tool Open Beta



<https://preview.micronutrient.support>