




TIL about
showModal




from small things

things one day come

 HTML  

```
1 <main lang="en">
2   <a
3     class="lightbox-link"
4     href="https://images.unsplash.com/photo-
1611042553365-9b101441c135?ixlib=rb-4.0.3&
ixid=MnwxMjA3fDB8MHxwaG90by1wYWdlfHx8fGVufDB
8fHx8&auto=format&fit=crop&w=2000&q=40"
5   >
6     
12  </a>
13  <a
```

 CSS  

 JS  



PHOTOS BY [RAAMIN KA](#) ON UNSPLASH

dialog

The dialog element represents a part of an application that a user interacts with to perform a task, for example a dialog box, inspector, or window.

```
HTML [⚙ ⌵]  
1 ▶ <dialog open>↔↔</dialog>  
10 ▶ <main inert>↔↔</main>  
27  
  
* CSS [⚙ ⌵]  
Ⓞ JS [⚙ ⌵]
```

Modal dialogs and inert subtrees

A [Document](#) document is blocked by a modal dialog subject if subject is the topmost [dialog](#) element in document's [top layer](#). While document is so blocked, every node that is [connected](#) to document ~~with the exception of the subject element and its flat tree~~ [tree](#) desc

subject can only if sp ancestors similar fa The [dial](#) mechanis [documen](#)

The inert attribute

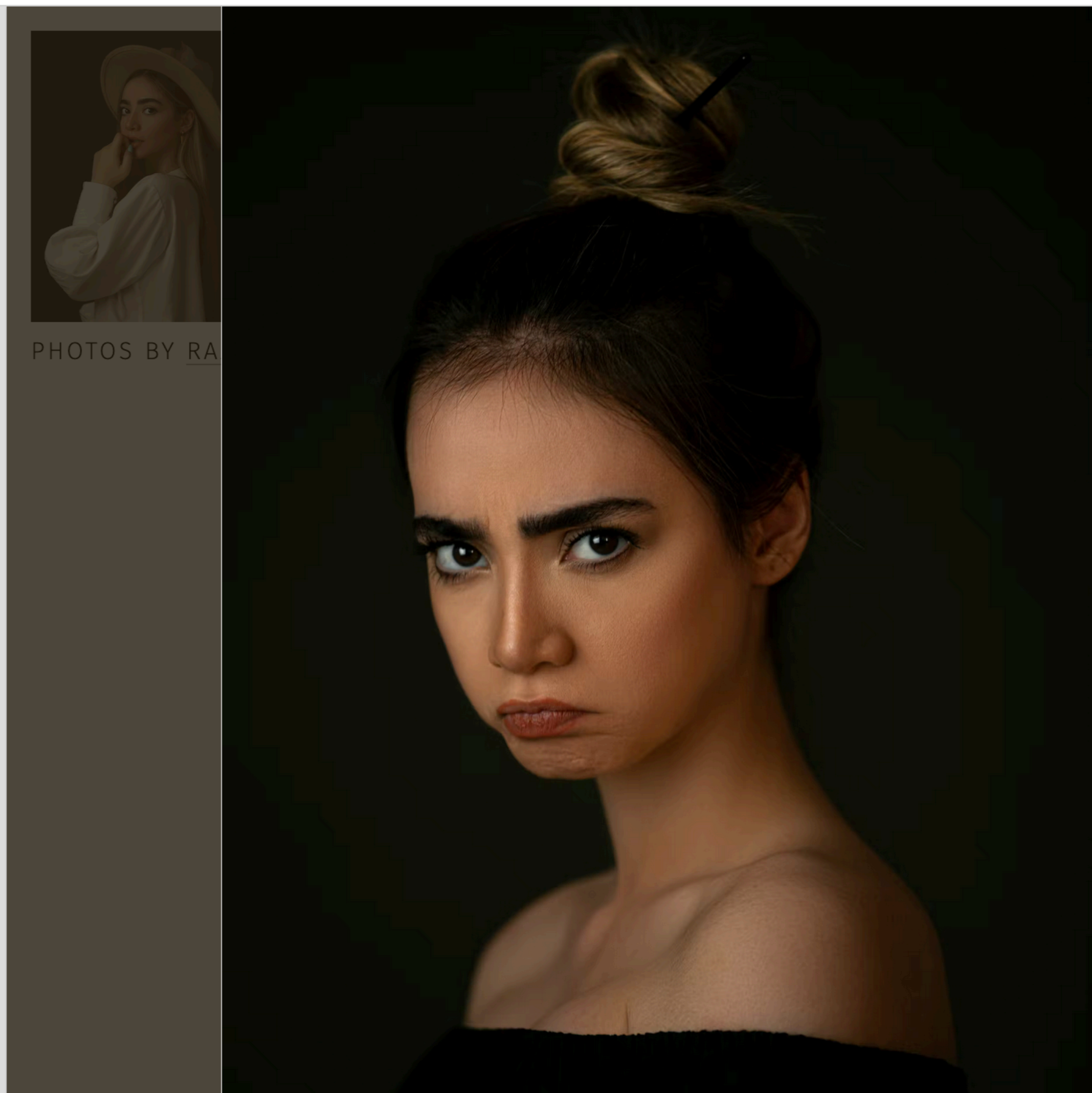
The [inert](#) attribute is a [boolean attribute](#) that indicates, by its presence, that the element and all its [flat tree](#) descendants which don't otherwise escape inertness (such as modal dialogs) are to be made [inert](#) by the user agent.

The inert IDL attribute must [reflect](#) the content attribute of the same name.

`inert`

The `inert` attribute is a boolean attribute that indicates, by its presence, that the element and all its flat tree descendants which don't otherwise escape inertness (such as modal dialogs) are to be made inert by the user agent.

```
HTML [gear] [dropdown]
CSS [gear] [dropdown]
JS [gear] [dropdown]
5 lightbox.openLightbox = (lightboxLink) => {
6   for (let element of
   document.body.children) {
7     element.inert = true;
8   }
9
10  const lightboxThumbnail =
   lightboxLink.querySelector('img');
11
12  // show enlarged preview image while big
   image is being loaded
13  lightboxImage.src = lightboxThumbnail.src;
14  requestAnimationFrame(() => {
15    lightboxImage.src =
   lightboxThumbnail.dataset.src ??
   lightboxLink.href;
16  });
17
18  lightboxImage.srcset =
   lightboxThumbnail.dataset.srcset ?? '';
19  lightboxImage.alt =
   lightboxThumbnail.dataset.alt ??
```



Show

The `showModal` method displays the dialog element and makes it the top-most modal dialog.

Modal

```
HTML
CSS
JS

5 lightbox.showLightbox = (lightboxLink) => {
6   const lightboxThumbnail =
   lightboxLink.querySelector('img');
7
8   // show enlarged preview image while big
   image is being loaded
9   lightboxImage.src = lightboxThumbnail.src;
10 requestAnimationFrame(() => {
11   lightboxImage.src =
   lightboxThumbnail.dataset.src ??
   lightboxLink.href;
12 });
13
14 lightboxImage.srcset =
   lightboxThumbnail.dataset.srcset ?? '';
15 lightboxImage.alt =
   lightboxThumbnail.dataset.alt ??
   lightboxThumbnail.alt;
16
17 lightbox.showModal();
18 };
19
```



✕ CLOSE

TIL about
showModal

from small things

things one day come