



MONGODB.LOCAL  
**CHICAGO**

# Wesley Faulkner

MongoDB Atlas Jumpstart [Intro to Atlas]

@wesley83

#MDBlocal



# Wesley Faulkner

Developer Advocate

Austin, Texas

# What to Expect

- Atlas History
- Security at the Core
- Our Cloud Advantage
- Platform Saves Time & Money

# Atlas

unlocks **agility**  
and **reduces**  
**cost**



Self-service and  
elastic



Global and highly  
available



Secure by default



Comprehensive  
monitoring



Managed backup



Sync & Serverless

# MongoDB Atlas — Global Cloud Database

## Self-service & elastic

Deploy, modify, and upgrade on demand with best-in-class operational automation

Automated database maintenance

Database and infrastructure resources as code

Scale up, out, or down in a few clicks or API calls

## Global & cloud-agnostic

Available in 60+ regions across AWS, Azure, GCP

Global clusters for read/write anywhere deployments and multi-region fault tolerance

Easy migrations with a consistent experience across cloud providers

## Enterprise-grade security & SLAs

Network isolation, VPC peering, end-to-end encryption, and role-based access controls

Encryption key management, LDAP integration, granular database auditing

SOC 2 / Privacy Shield / HIPAA

Guaranteed reliability with SLAs

## Comprehensive monitoring

Deep visibility into 100+ KPIs with proactive alerting

Real-time performance tracking and Performance Advisor

APIs to integrate with monitoring dashboards

## Managed backup

Point-in-time data recovery

Queryable backup snapshots

Consistent snapshots of sharded deployments

Cloud data mobility

## Sync and Serverless

Simple, serverless functions for backend logic, service integrations, and APIs

Database access from your frontend secured by straightforward, field-level access rules

Database and authentication triggers to react to changes in real time

# The evolution of MongoDB

Document Validation	Linearizable reads	Change Streams	Replica Set Transactions	Distributed Transactions
\$lookup	Intra-cluster compression	Retryable Writes	Atlas Global Clusters	Global Point in Time Reads
Fast Failover	Read only views	Expressive Array Updates	Atlas HIPAA	Large Transactions
Simpler Scalability	Log Redaction	Query Expressivity	Atlas LDAP	Mutable Shard Key Values
Aggregation ++	Graph Processing	Causal Consistency	Atlas Audit	Atlas Data Lake (Beta)
Encryption At Rest	Decimal	Consistent Sharded Sec. Reads	Atlas Enc. Storage Engine	Atlas Auto Scaling (Beta)
In-Memory Storage Engine	Collations	Ops Manager ++	Atlas Backup Snapshots	Atlas Full-Text Search (Beta)
BI Connector	Faceted Navigation	Query Advisor	Type Conversions	Atlas ISO Compliance
MongoDB Compass	Aggregation ++	Schema Validation	40% Faster Shard Migrations	Atlas Service Broker
APM Integration	Auto-balancing ++	End to End Compression	Snapshot Reads	Field Level Encryption (Beta)
Auto Index Builds	ARM, Power, zSeries	IP Whitelisting	Non-Blocking Sec. Reads	Multi-CAs & Online Rotation
Backups to File System	BI & Spark Connectors ++	Default Bind to Localhost	SHA-2	On-Demand Materialized Views
	Compass ++	Sessions	TLS 1.1+	Wildcard Indexes
	LDAP Authorization	WiredTiger 1m+ Collections	Compass Agg Pipeline Builder	Agg Pipeline ++
	Encrypted Backups	Expressive \$lookup	Compass Export to Code	Expressive Updates
	Cloud Foundry Integration	R Driver	Charts Beta	Apache Kafka Connector (Beta)
		Atlas Cross Region Replication	Free Monitoring Cloud Service	MongoDB Charts GA
		Atlas Auto Storage Scaling	Ops Manager K8s Beta	Retryable Reads & Writes
			MongoDB Stitch GA	New Index Builds
			MongoDB Mobile Beta	10x Faster stepDown
				Storage Node Watchdog
				Zstandard Compression
				Ops Manager Headless Backup
				Ops Manager K8s GA
				Ops Manager Single Agent

3.2

3.4

3.6

4.0

4.2

# Trusted and Proven

Used by millions of developers to power the world's most innovative products and services

facebook

inVISION

ebay

Adobe

Google

SQUARESPACE

coinbase

SEGA

intuit.

eHarmony

EA

verizon

shutterfly

GOV.UK

SAP

 mongoDB® Atlas  
: The only *true* multi-cloud database as a service



**Database that runs the same everywhere**

Consistent experience across AWS, Azure, and GCP

**Coverage in any geography**

Deploy in 59 regions worldwide  
Create globally distributed databases with a few clicks

**Leverage the benefits of a multi-cloud strategy**

Exploit the benefits of AWS, Azure, or GCP services on your data

**Avoid lock-in**

Easily migrate data between cloud providers



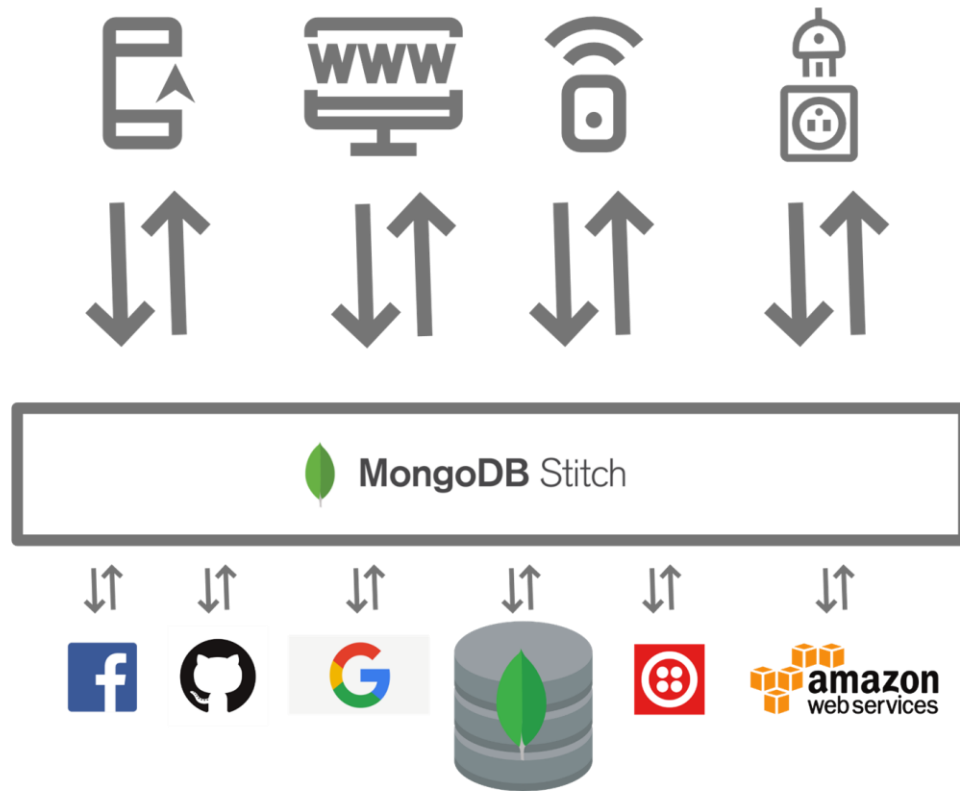
# Live Demo

- Creating an account
- Creating a cluster
- Explorer the interface

**Write Everywhere:**  
zoned sharding routes data to the regions where it's needed



# MongoDB Stitch Serverless Platform



Streamlines app development with simple, secure access to data and services from the client with thousands of lines less code to write and no infrastructure to manage.

Getting your apps to market faster while reducing operational costs.

Save weeks of development and thousands of lines of code

## Without Stitch

- Provision backend server
- Install runtime environment
- Add code to make backend HA
- Add code to scale backend
- Monitor & manage backend infrastructure
- Code REST API for frontend to use backend
- Code backend application logic

## With Stitch

Handled automatically by Stitch and Atlas

Provide JS code for Stitch Functions

Simple JSON Config

Code frontend using single SDK/API to access backend services

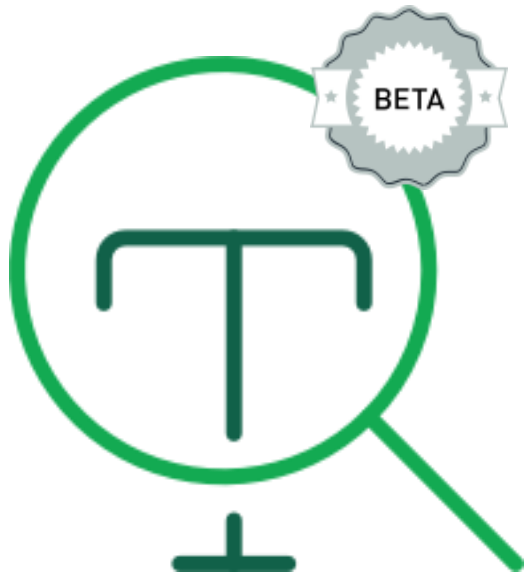
## Backend

## Data Access

## Frontend

# New: MongoDB Atlas Full Text Search (Beta)

---

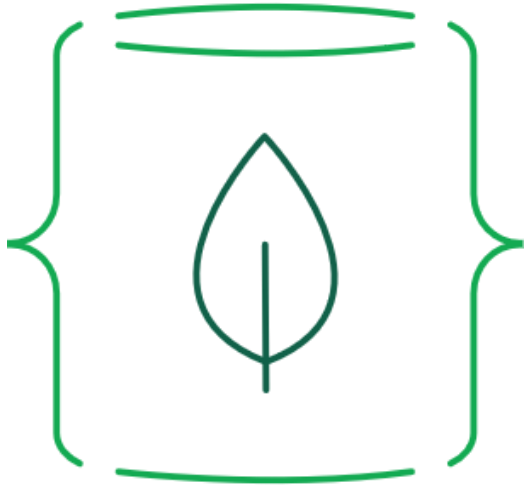


- Adds Full Text Search as a fully managed service to your Atlas cluster
  - Power of Lucene 8, without provisioning and running a separate search platform
  - Integrated with MongoDB Query Language, so no separate APIs to learn
  - Dynamic and static indexing supporting fuzzy & wildcard search, Boolean & compound queries, language analyzers, scoring and snippets
  - Configured via Atlas Data Explorer or API

## What we Covered

- The Evolving Atlas Platform
- Our Flexible Cloud Architecture
- Security and Stability Best Practices
- Leverage our Serverless Tools

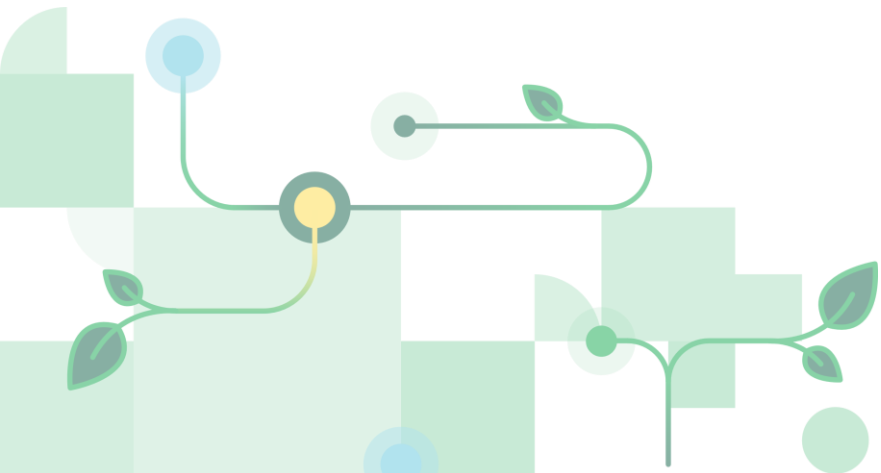
# When should you make the move to Atlas?



- When you're starting a new project
- Migrating off old infrastructure
- Moving to a major revision
- Forced to move due to regulation

# WF200

Get \$200 of MongoDB Atlas credit with this code!





MONGODB.LOCAL

## [Jumpstart] MongoDB Atlas Jumpstart

<https://www.surveymonkey.com/r/6F9SRMT>

Every session you rate enters you into a drawing for a \$250  
Visa gift card, sponsored by



#MDBlocal



MONGODB  
**.LOCAL**

**THANK YOU**





MONGODB  
LOCAL

