

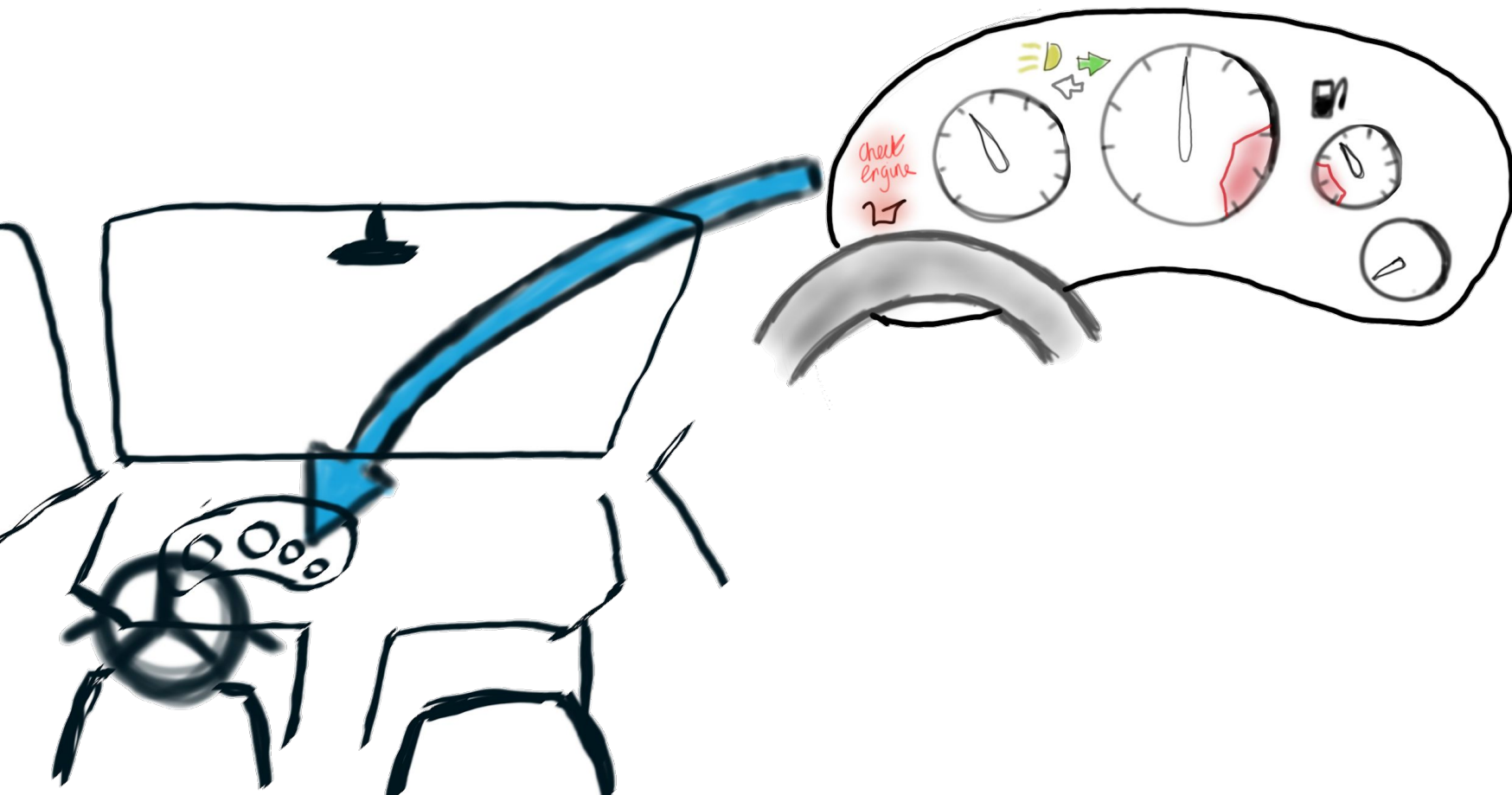
A Practical Guide to Dashboarding

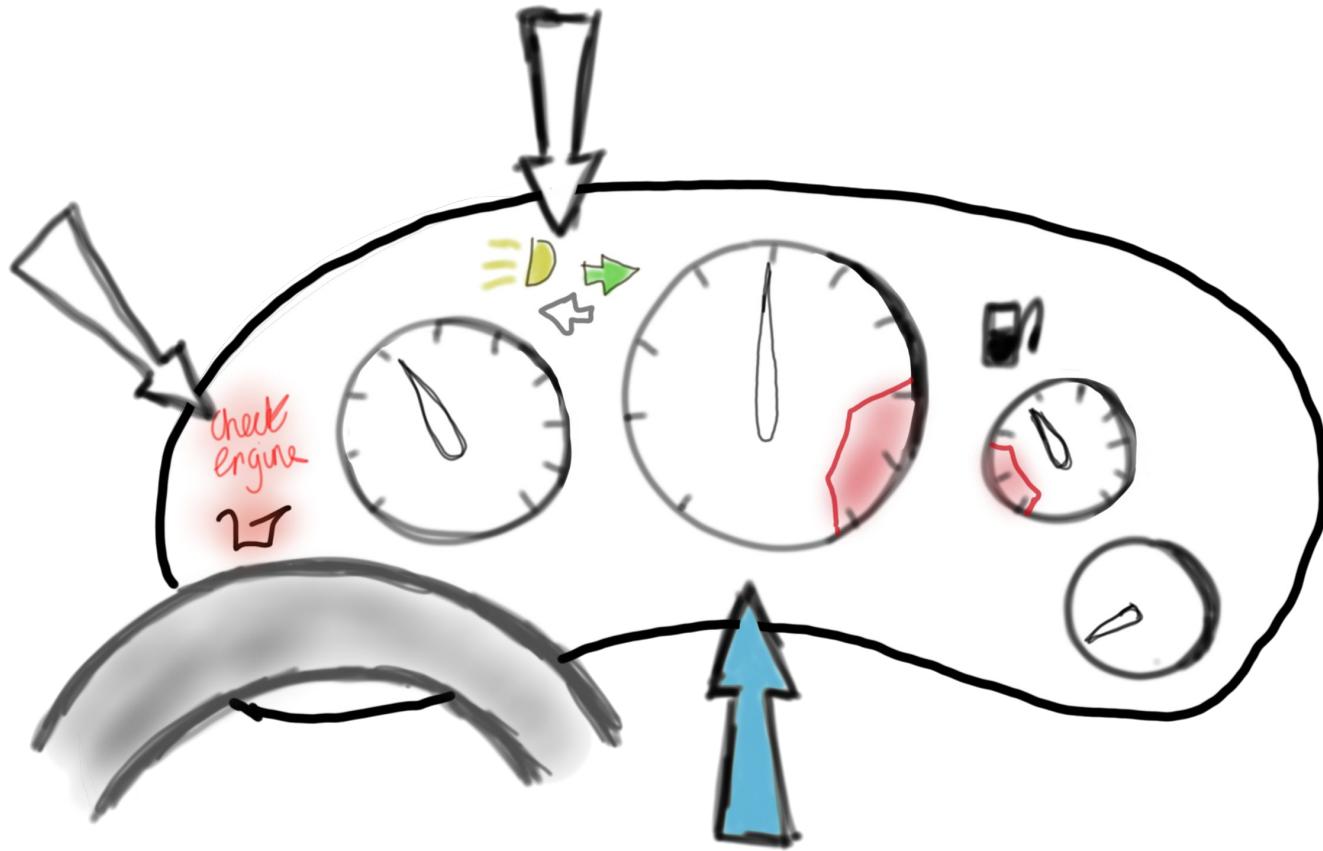


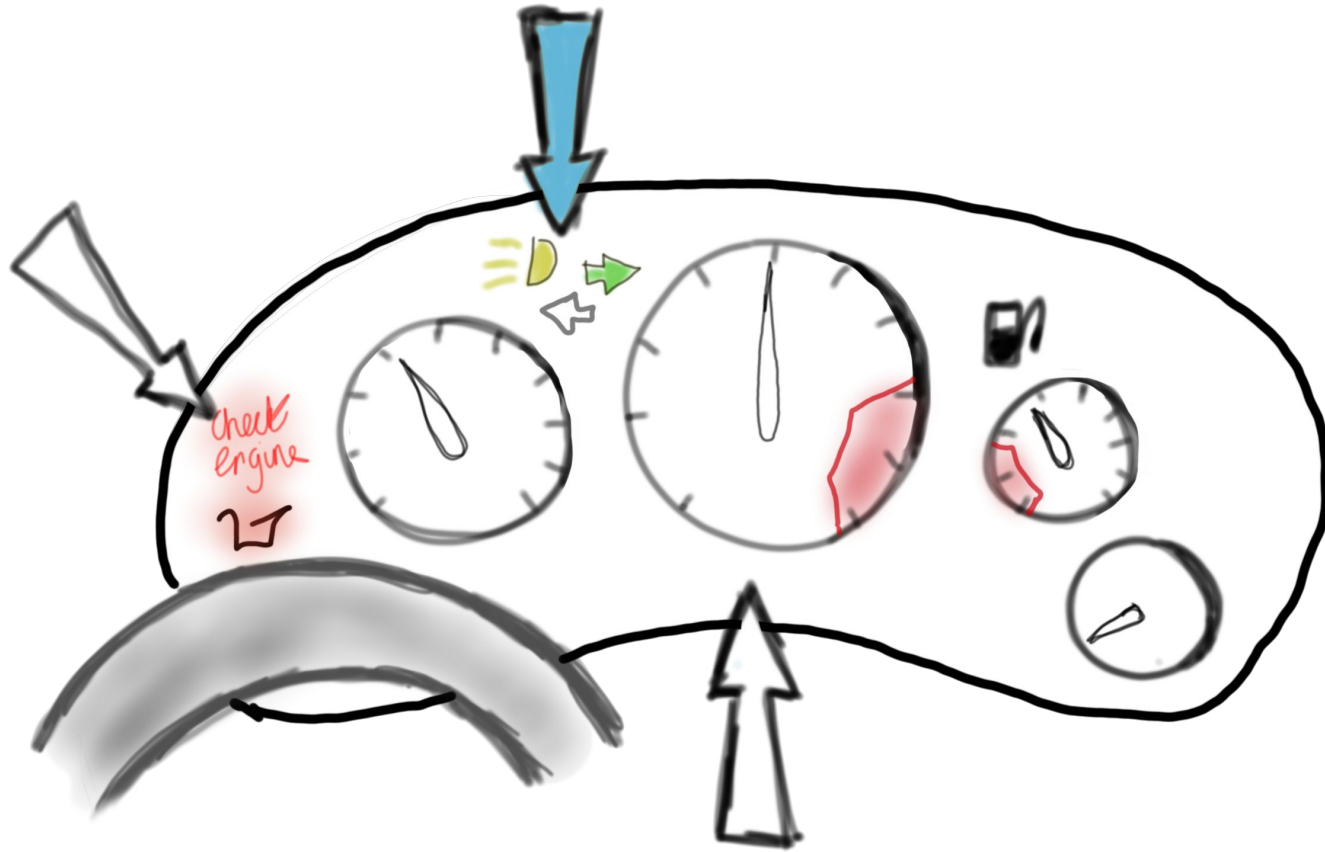
Jessica White
Software Engineer

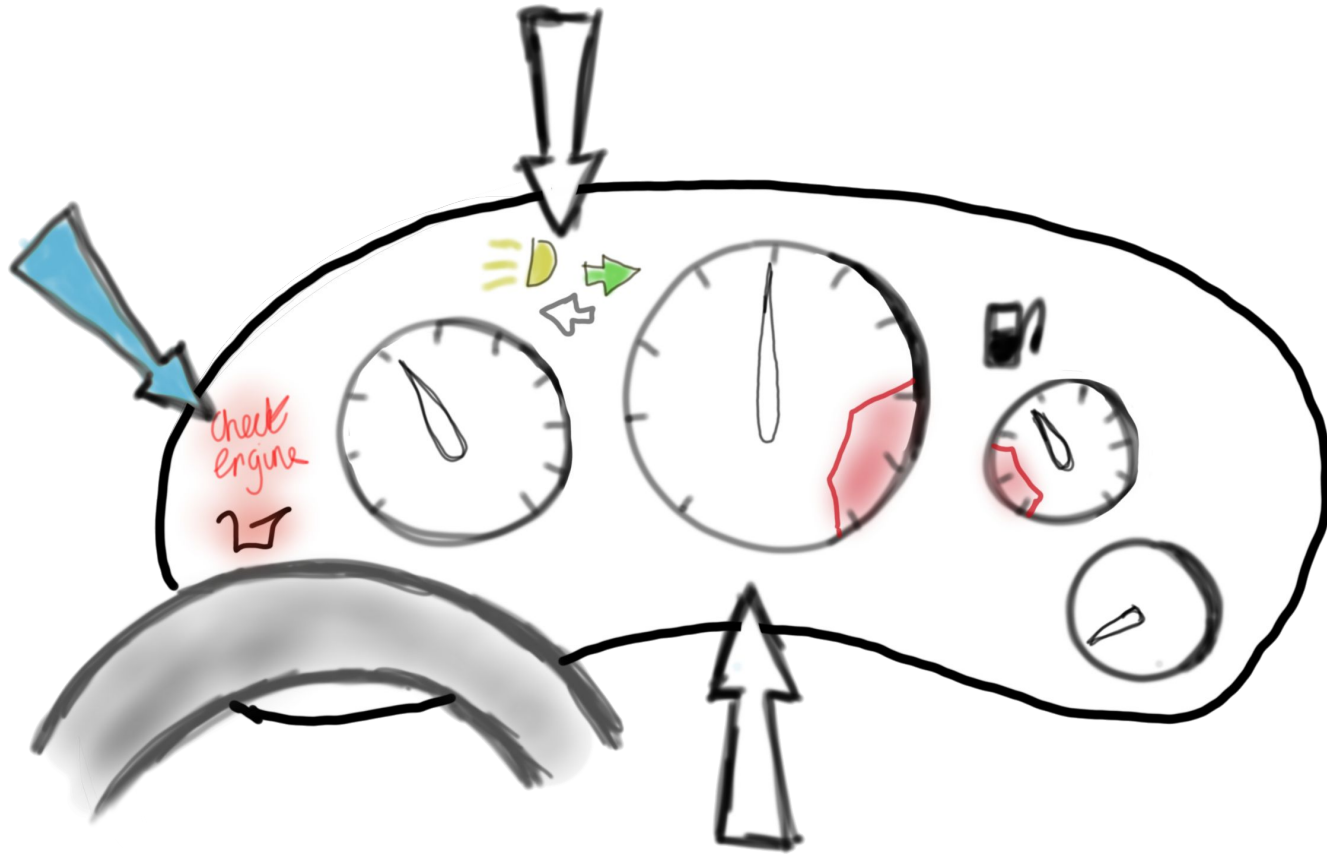
What Is A Dashboard & Why Should I Care?













Metrics VS Diagnostics

- High level view
 - For assessing a system and spotting issues
 - Kept in present view
- Log analytics
 - For tracing and debugging
 - Used when fixing issues

Suggested Baselines



Services

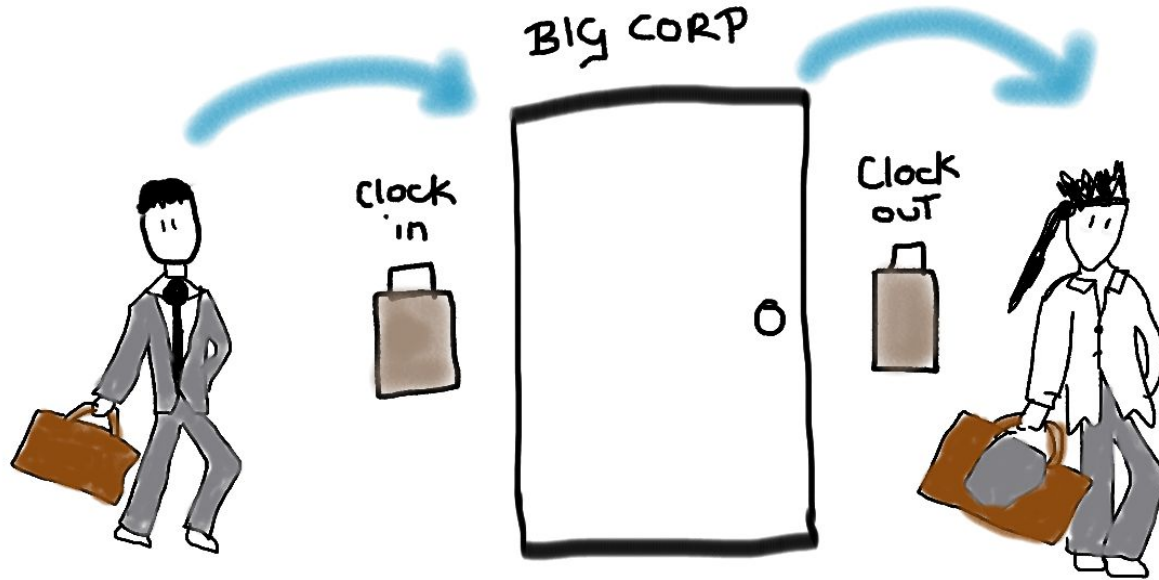


U.S.E



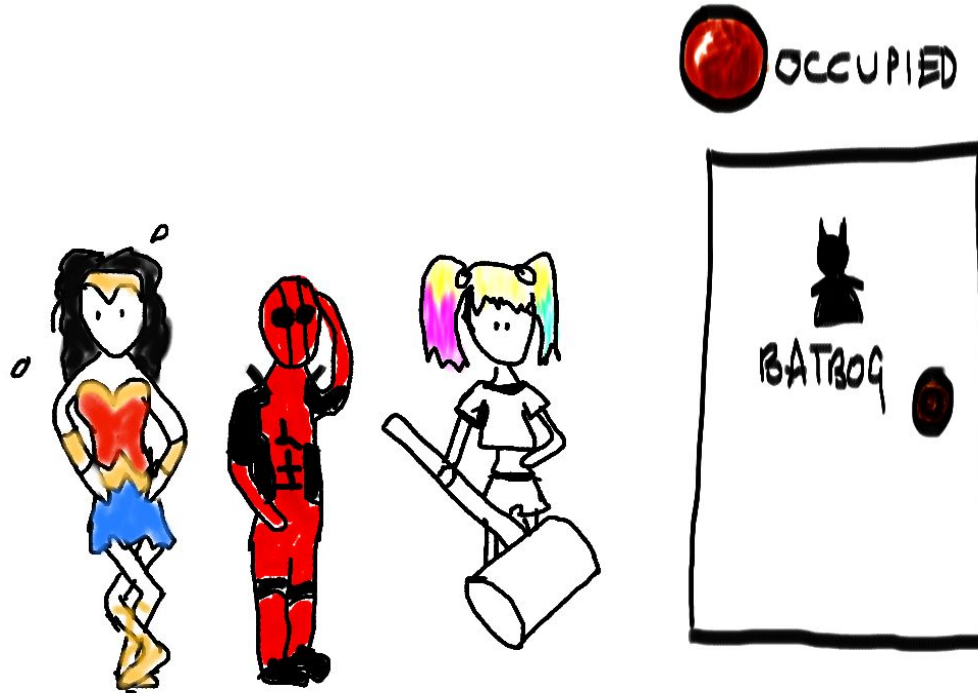


Utilisation



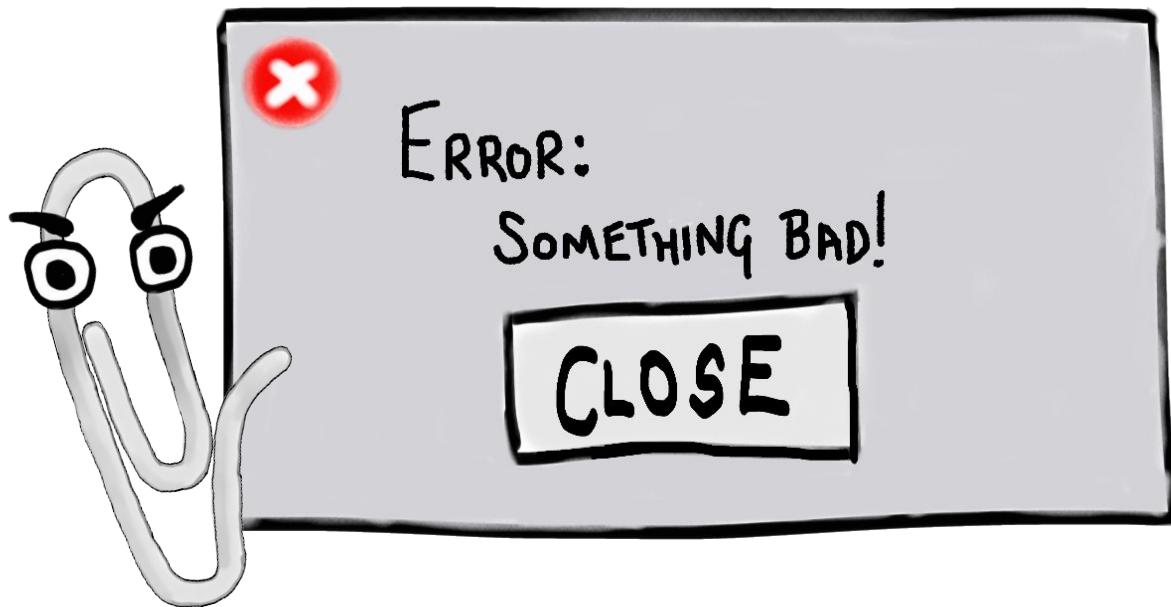


Saturation





Error



APIs





Four Golden Signals - Google

Traffic

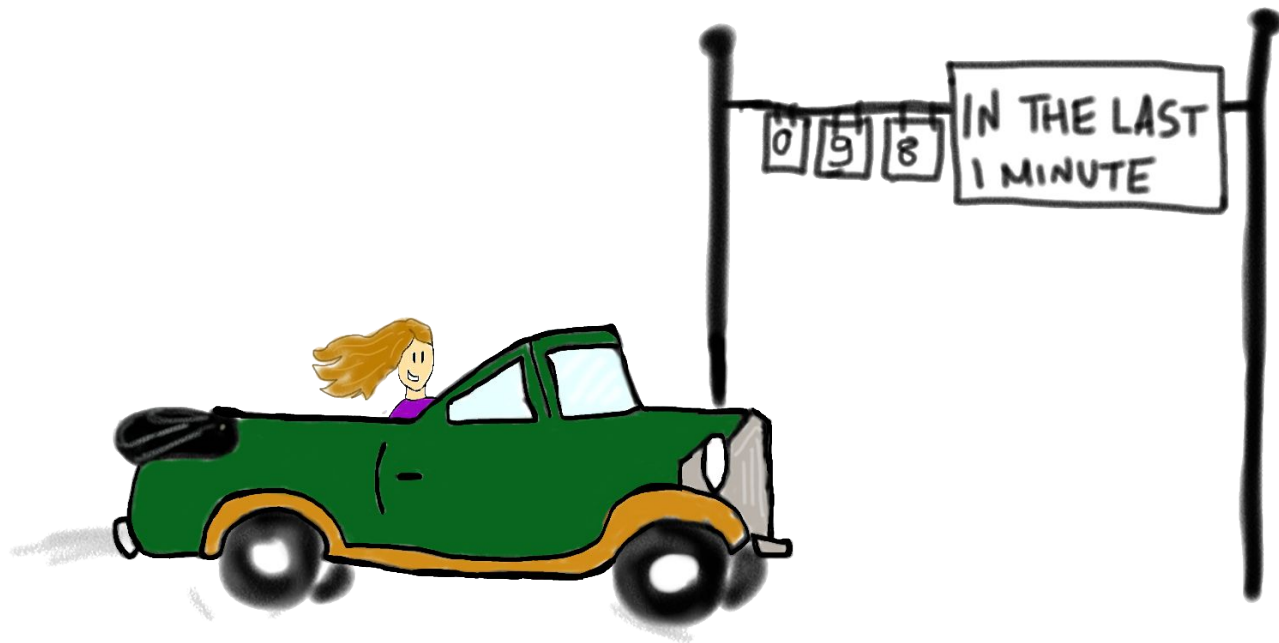
Error

Latency

Saturation



Four Golden Signals - Google

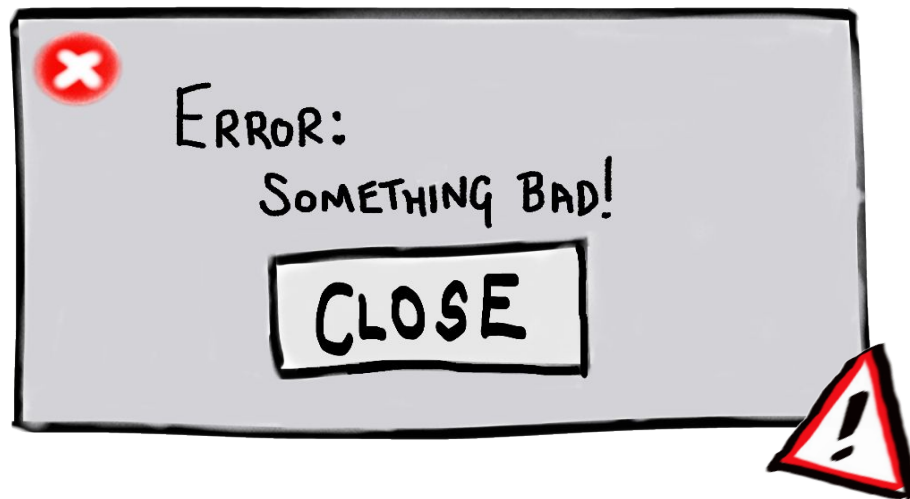


Traffic





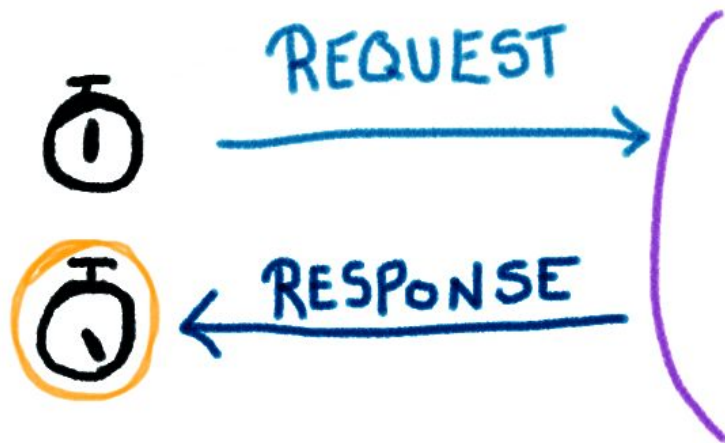
Four Golden Signals - Google



Error



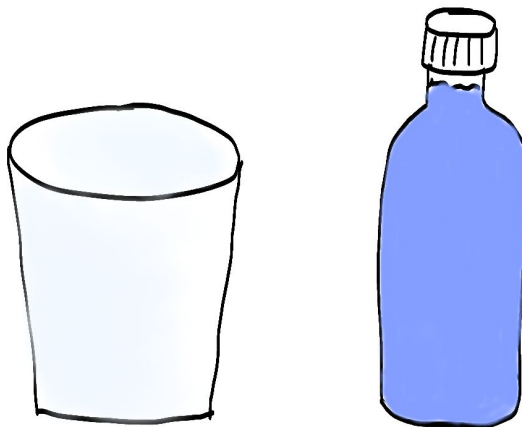
Four Golden Signals - Google



Latency



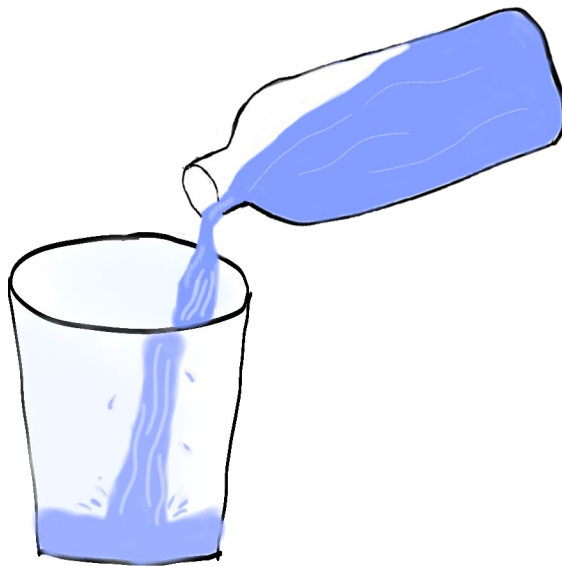
Four Golden Signals - Google



Saturation



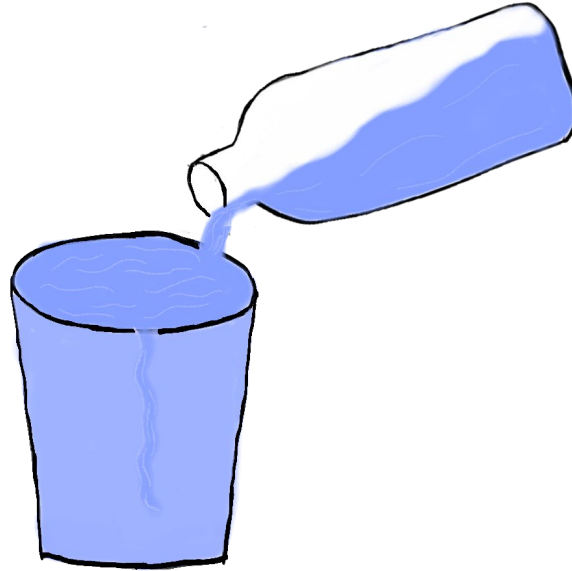
Four Golden Signals - Google



Saturation



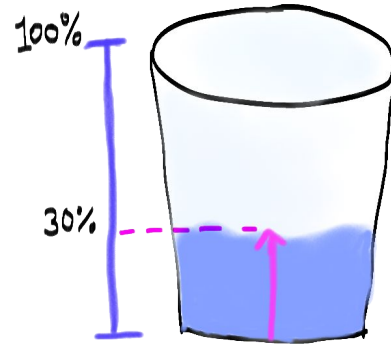
Four Golden Signals - Google



Saturation



Four Golden Signals - Google



Saturation



@JessPWhite
#NDCPorto

R.E.D

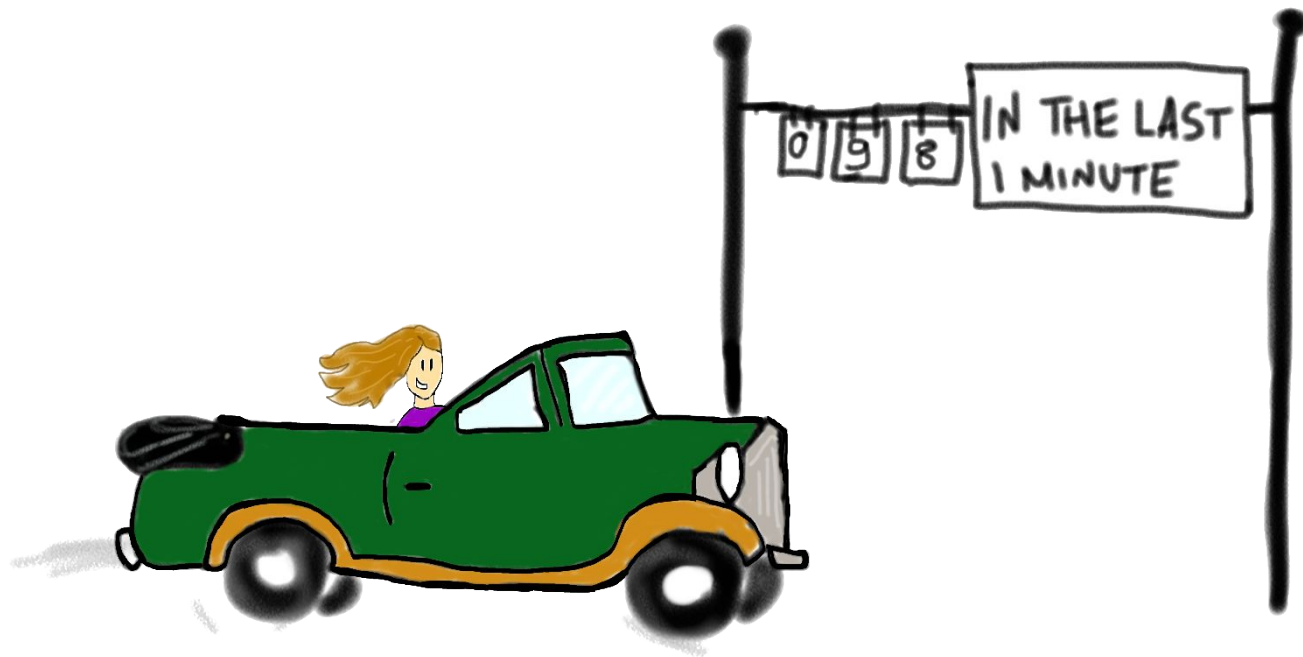
Rate

Error

Duration



R.E.D

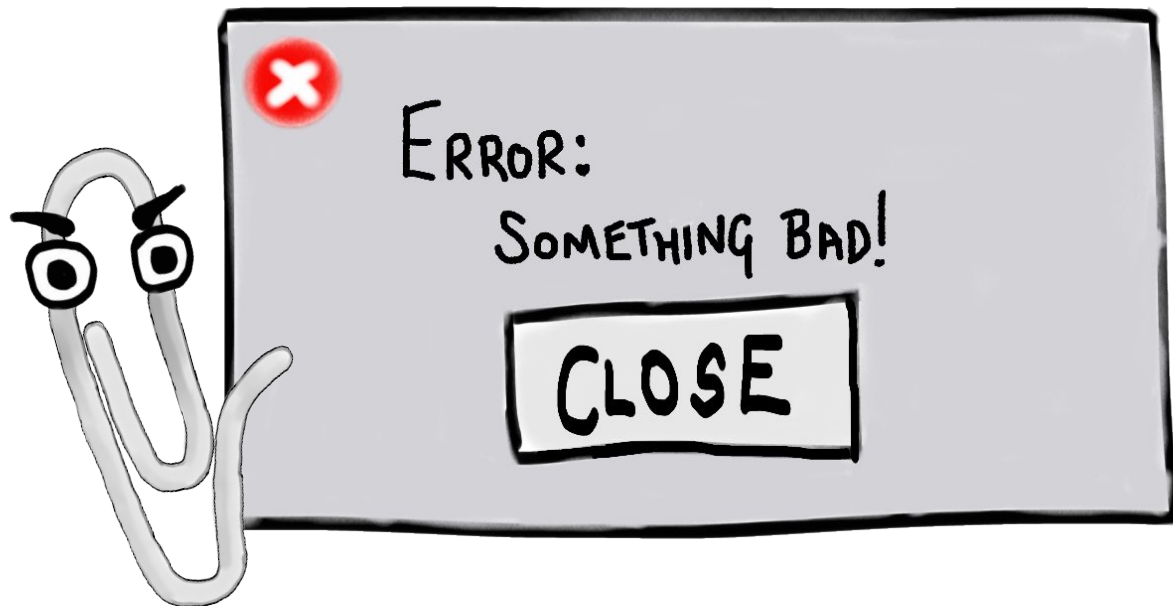


Rate





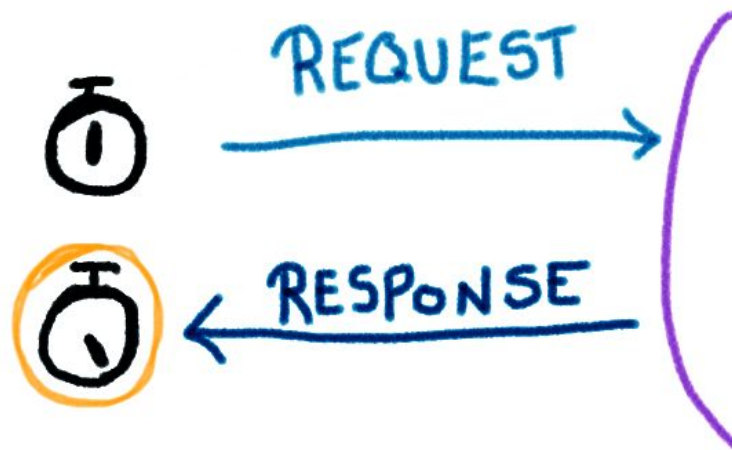
R.E.D



Error



R.E.D



Duration



Rate

Traffic

Error

Error

Duration

Latency

~~Saturation~~



Response API

Includes calls to the
servSTATSD





46 lines (40 sloc) | 1.3 KB

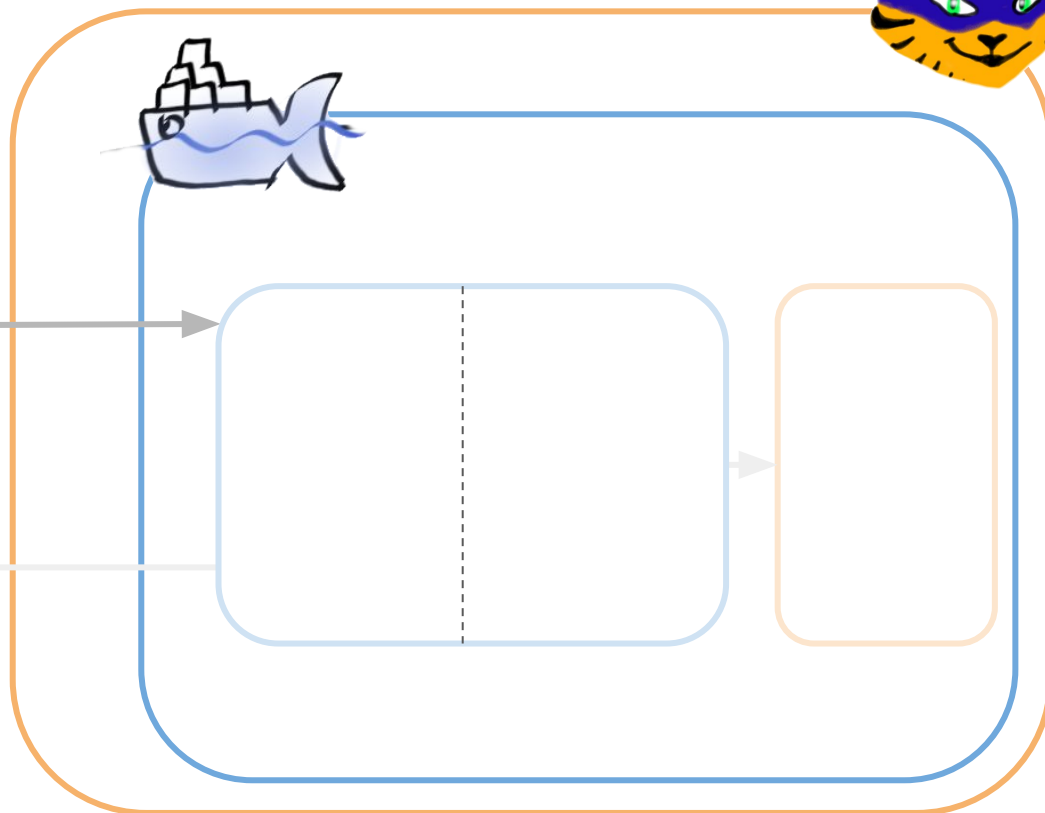
Raw Blame History

```
1 using JustEat.StatsD;
2 using Microsoft.AspNetCore.Builder;
3 using Microsoft.AspNetCore.Hosting;
4 using Microsoft.Extensions.Configuration;
5 using Microsoft.Extensions.DependencyInjection;
6
7 namespace response_api
8 {
9     public class Startup
10     {
11         public Startup(IConfiguration configuration)
12         {
13             Configuration = configuration;
14         }
15
16         public IConfiguration Configuration { get; }
17
18         public void ConfigureServices(IServiceCollection services)
19         {
20             services.AddMvc();
21         }
22
23         public void Configure(IApplicationBuilder app, IHostingEnvironment env)
24         {
25             if (env.IsDevelopment())
26             {
27                 app.UseDeveloperExceptionPage();
28             }
29             var statsDConfig = new StatsDConfiguration{
30                 Host = "graphite"
31             };
32             var statsDPublisher = new StatsDPublisher(statsDConfig);
33
34             app.Use(async (context, next) =>
35             {
36                 using (var timer = statsDPublisher.StartTimer("thing"))
37                 {
38                     await next();
39                     timer.StatName = $"response-api.code.{context.Response.StatusCode}";
40                 }
41             });
42
43             app.UseMvc();
44         }
45     }
46 }
```



Response API

Includes calls to the
servSTATSD





Response API

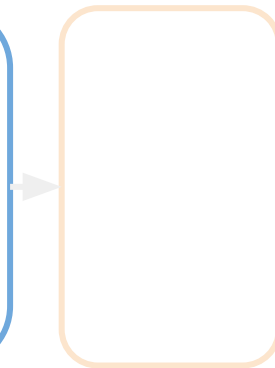
Includes calls to the
serv **STATSD**

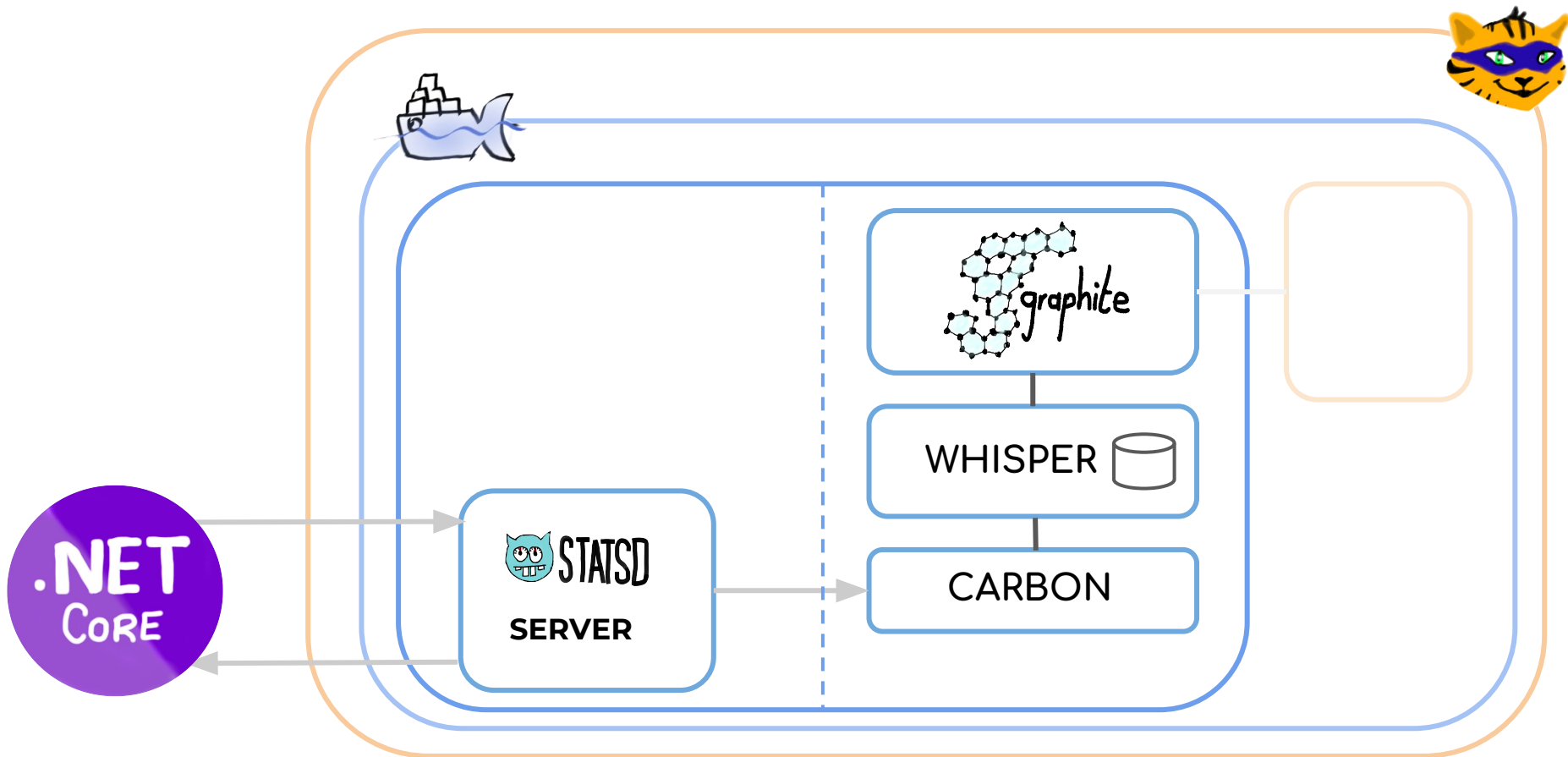
REQUEST

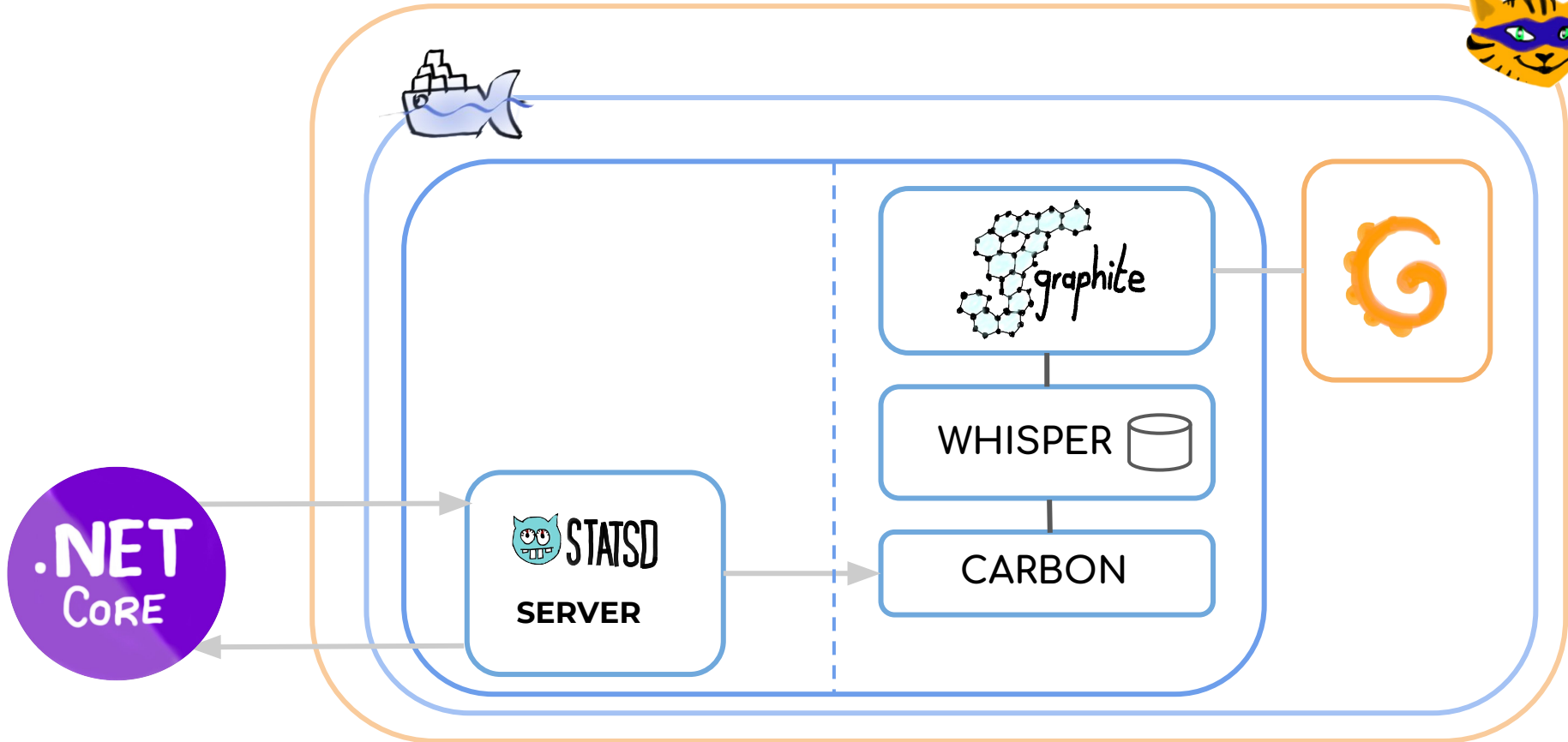
RESPONSE



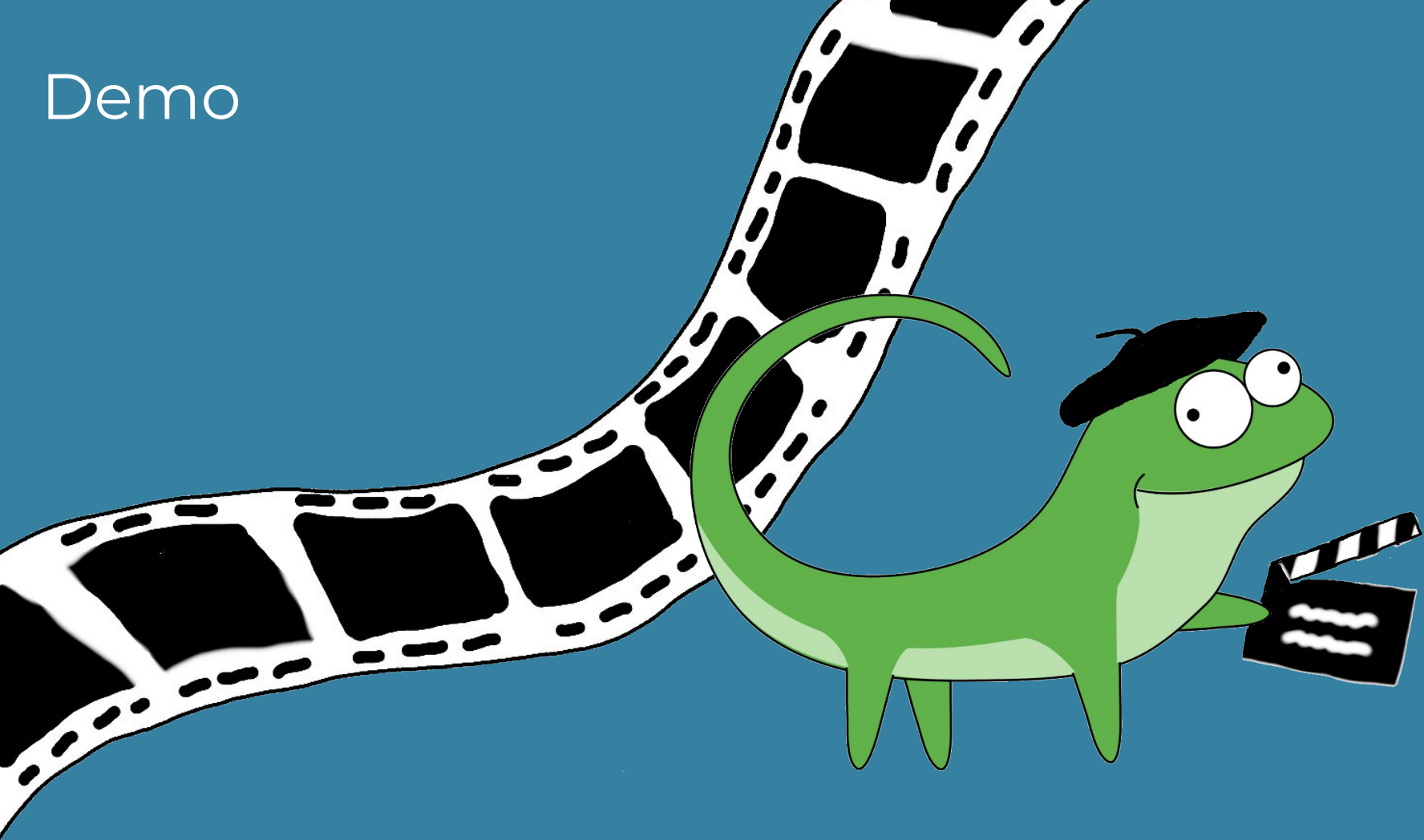
 **STATSD
SERVER**

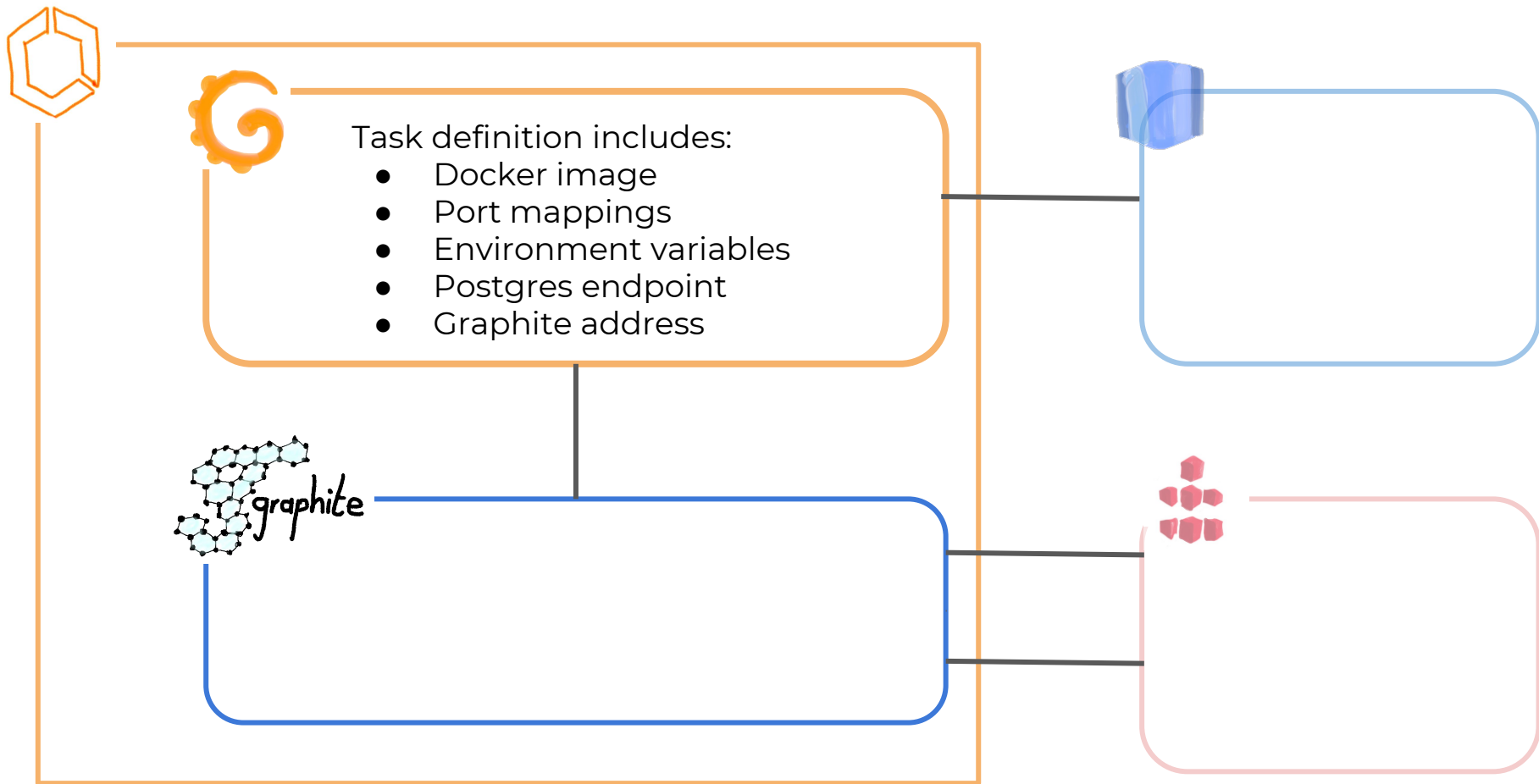


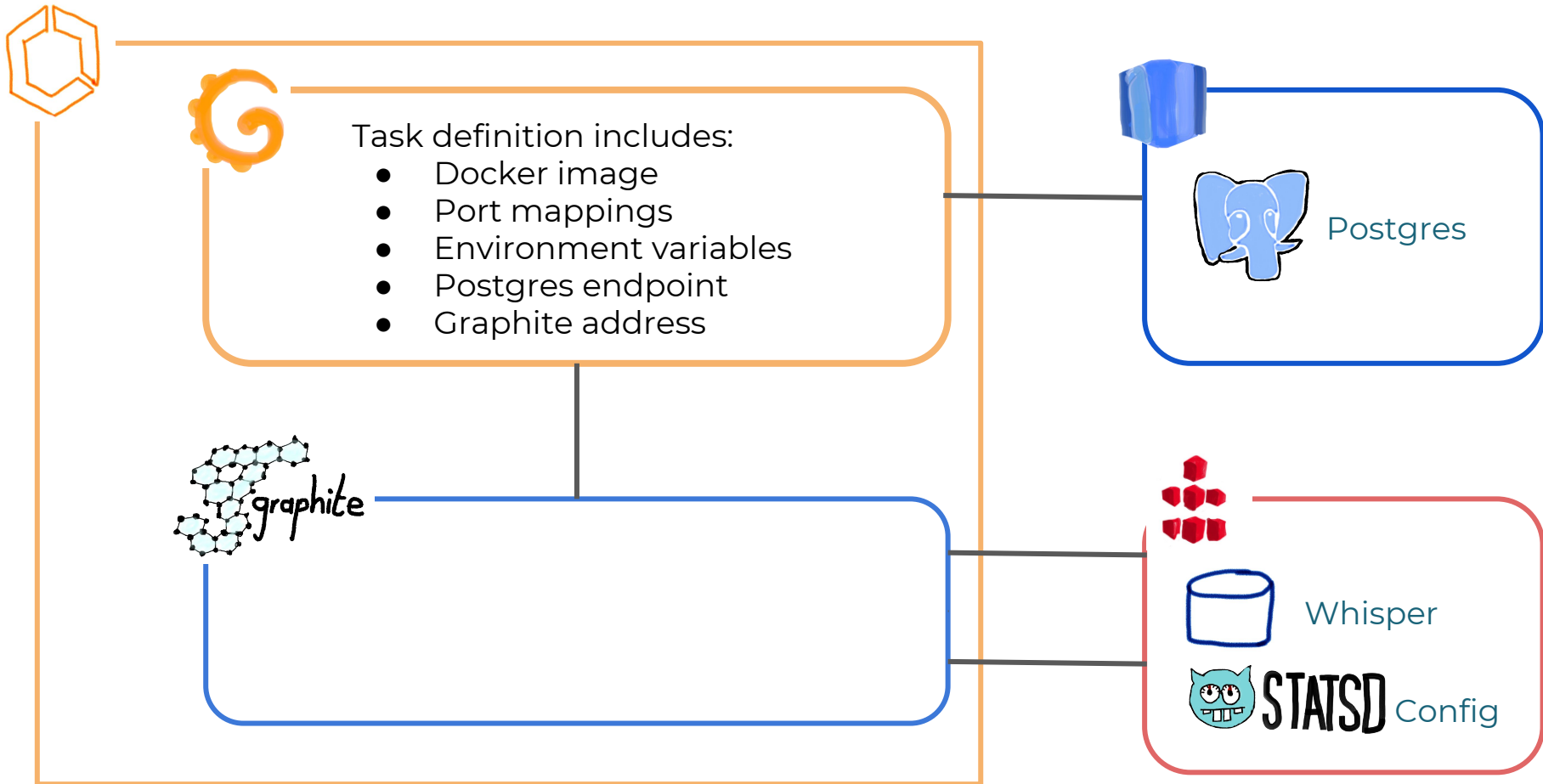




Demo







Do these metrics help you in real
life?





@JessPWhite
#NDCPorto





@JessPWhite
#NDCPorto



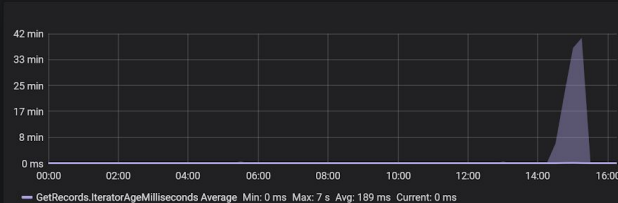
CloudWatch / AWS Kinesis



now/d to now-1m utc Refresh every 5m

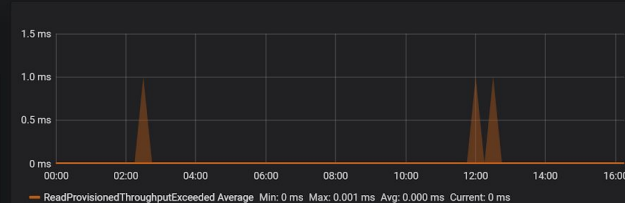
Avg. Iterator Age

199.01
ms



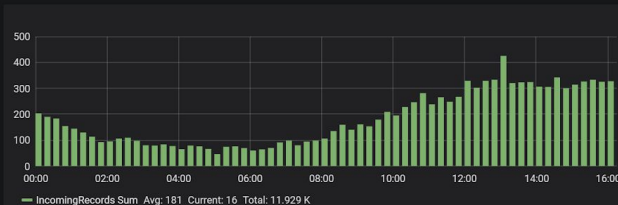
GetRecord Throttles

0



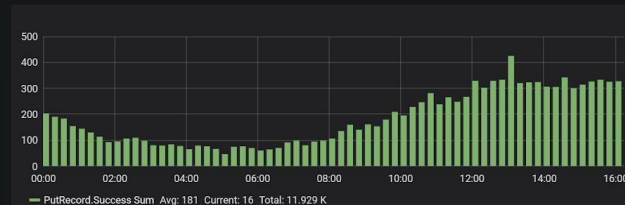
Incoming Records

11.93 K

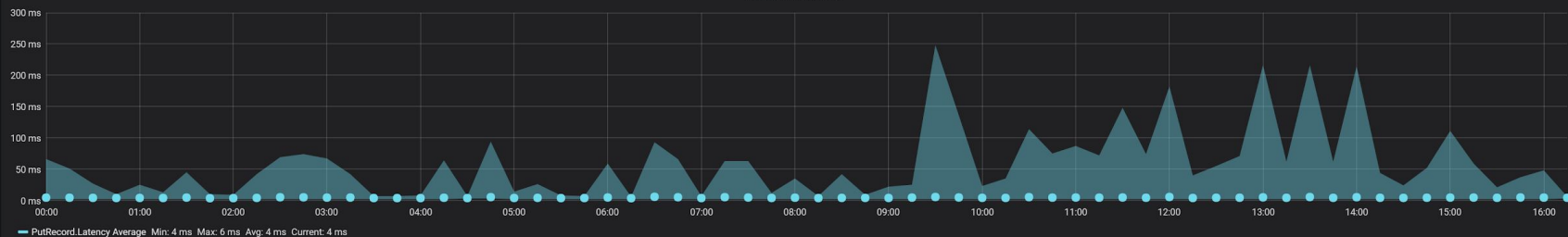


PutRecord Success

11.93 K



PutRecord Latency



Where Can I Learn More?



These slides and resources will be made available on my be.notist page after this session:

<https://noti.st/jesspwhite>

The link to which will be shared on Twitter @JessPWhite



Tom Wilkie -The Red Method: How To Instrument Your Services

- [Talk from Influx Days](#)
- [Slides From GrafanaCon EU](#)

Brendan Greg -The USE Method

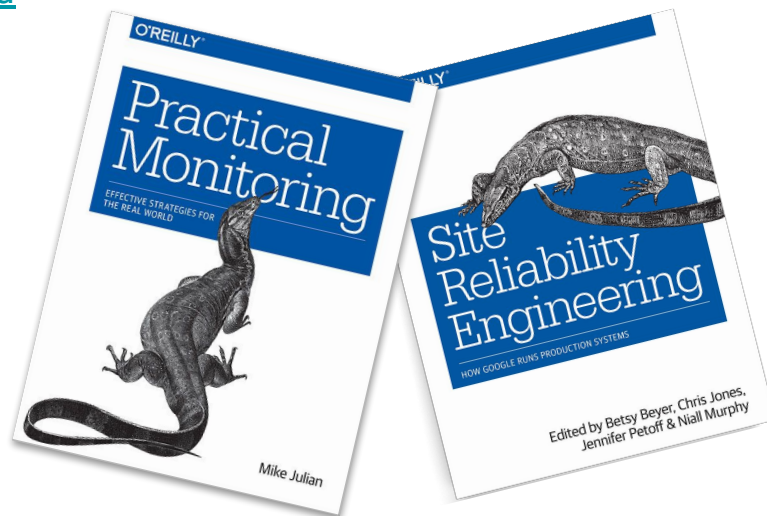
- [Article on USE Method](#)

Google SRE Book

- [Book available online](#)
- [Other google SRE resources](#)

Extra

- [I also occasionally blog](#)





HEY!
TECH
CHATTER...

MORE EQUALLY
AWESOME
CHATTER!





@JessPWhite
#NDCPorto







Thank you for listening

