

FOIT

FOUT

FUCK

```
@font-face
{
  font-family: 'What The Font';
  font-weight: normal;
  font-style: normal;
src: url('wtf.eot');
  src:
url('wtf.eot?#iefix') format('embedded-opentype'),
  url('wtf.woff2') format('woff2'),
  url('wtf.woff') format('woff'),
url('wtf.ttf') format('truetype'),
url('wtf.svg#wtf') format('svg')
}
```

WOFF

Weg mit den
alten Font-Formaten!

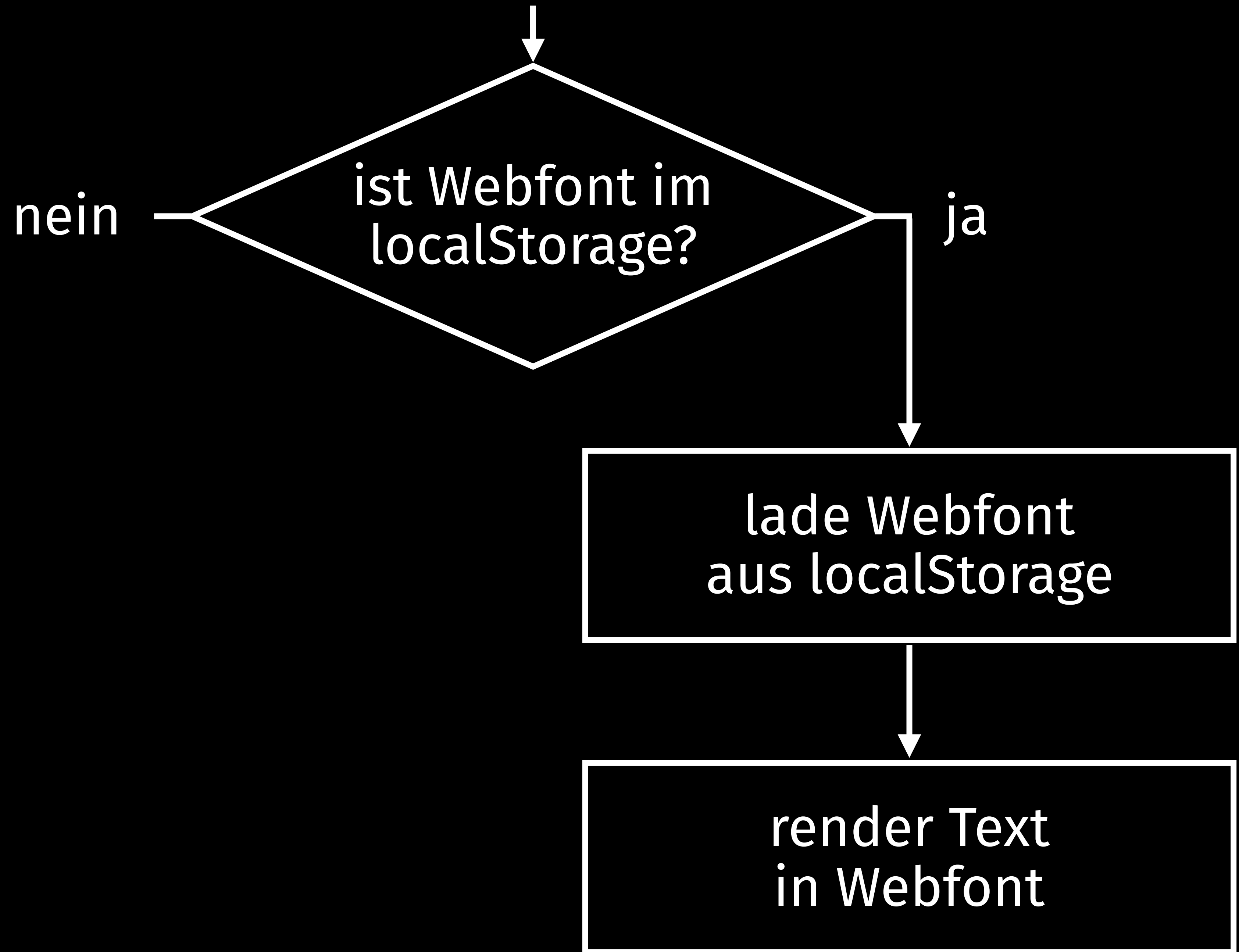
FOIT

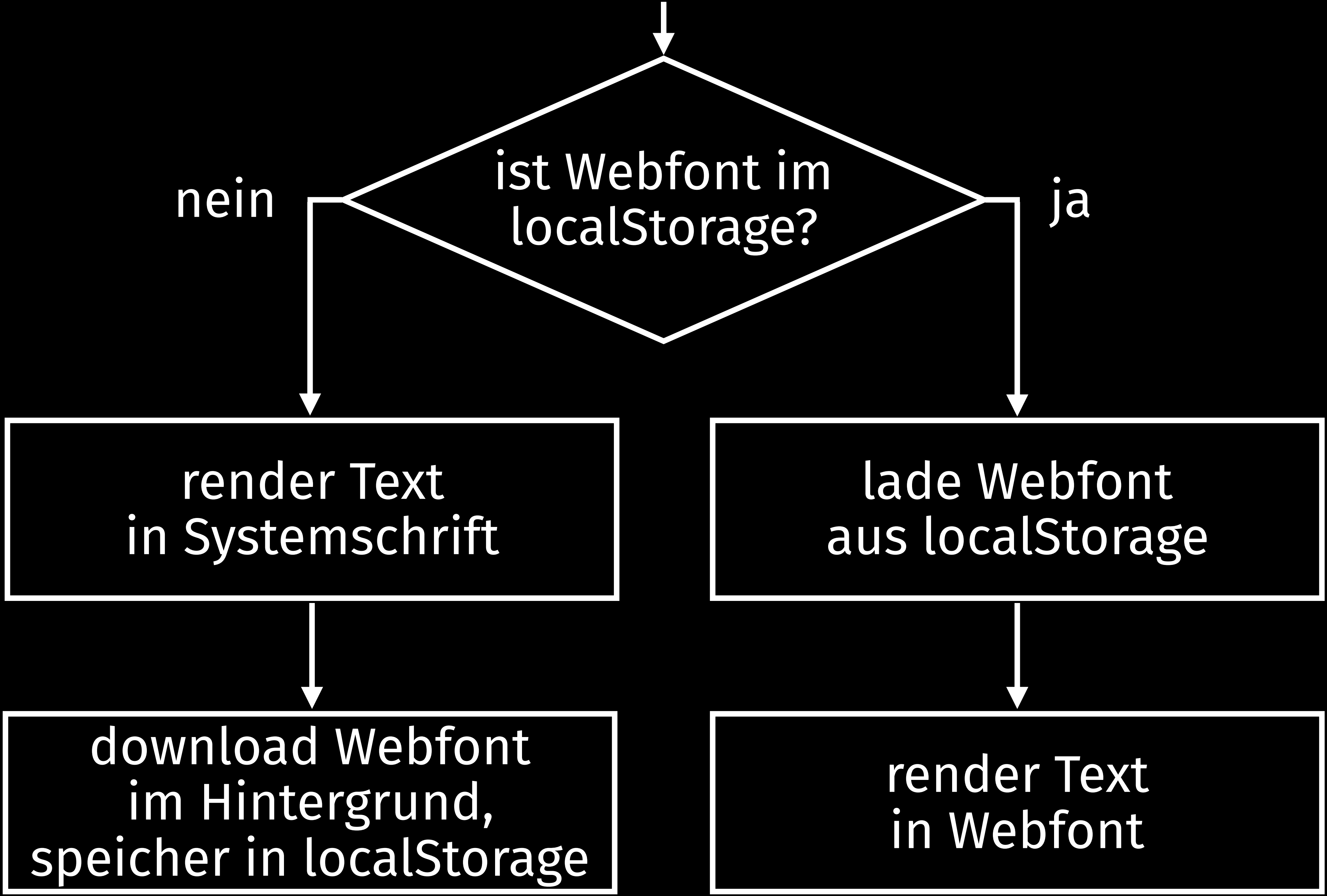
Flash of invisible text

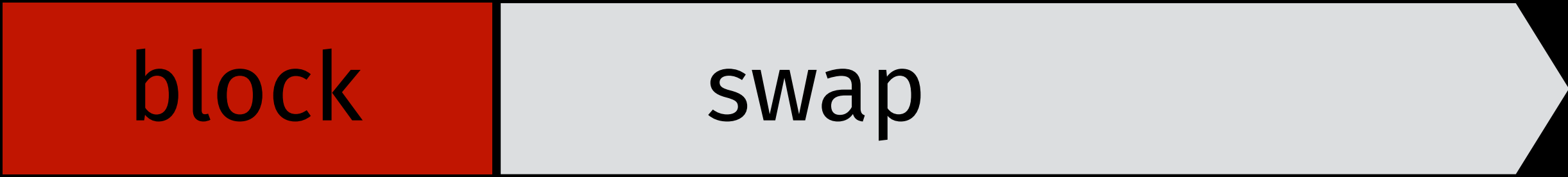
FOUT

Flash of unstyled text

niö





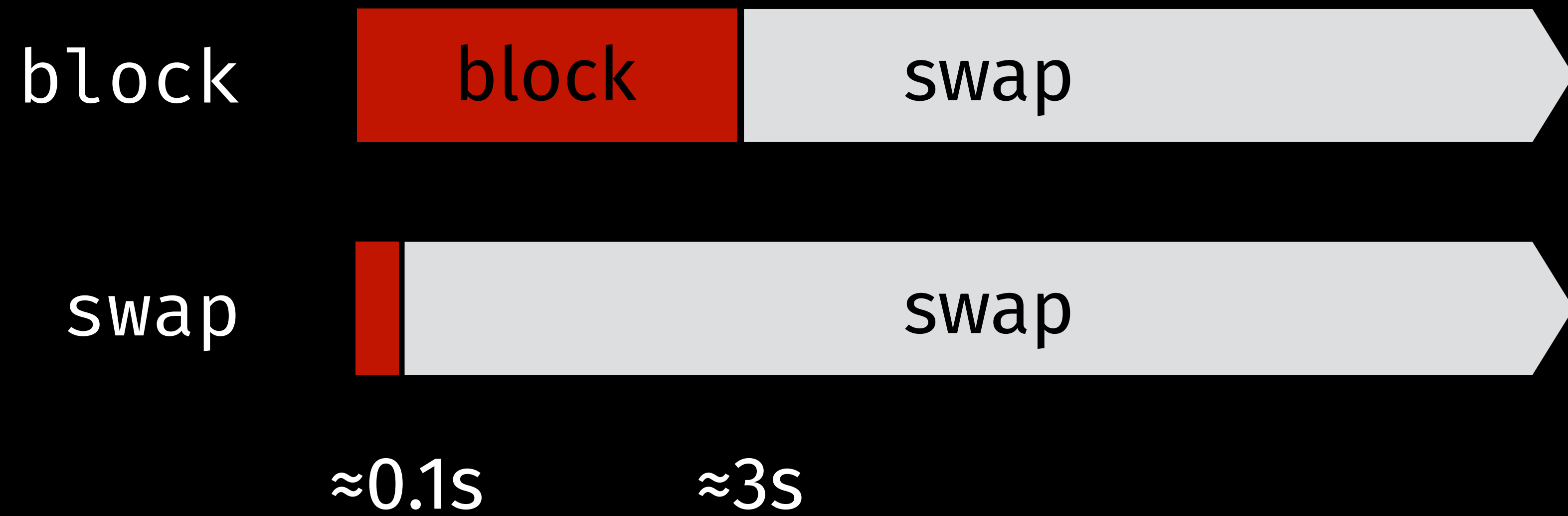


≈3s

FOIT

FOUT

font-display:



font-display:

block



swap



fallback



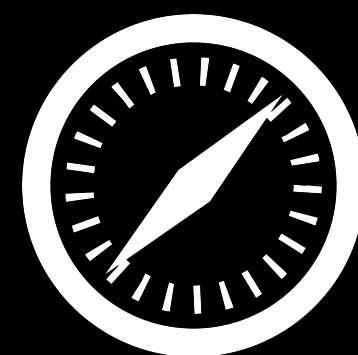
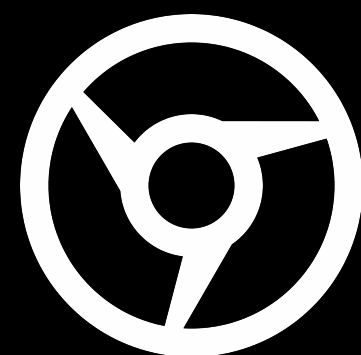
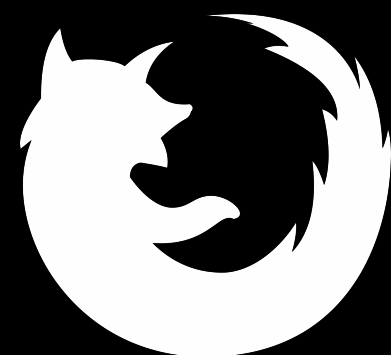
optional



≈0.1s

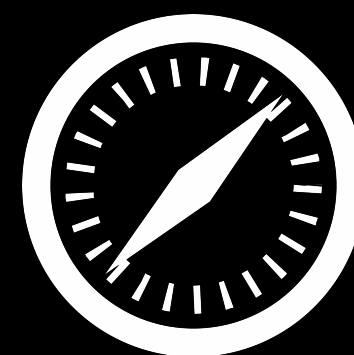
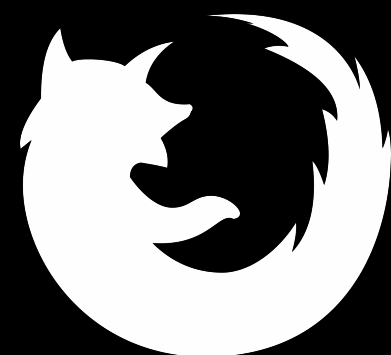
≈3s

```
@font-face
{
  font-family: 'What The Font';
  font-weight: normal;
  font-style: normal;
  src:
    url('wtf.woff2') format('woff2'),
    url('wtf.woff') format('woff');
  font-display: optional;
}
```



CSS Font Loading API

```
var wtfFace = new FontFace("What the Font", "url(wtf.woff)", {});  
wtfFace.load().then(function (loadedFace) {  
  document.fonts.add(loadedFace);  
  document.body.style.fontFamily = "What the Font, sans-serif";  
});
```



FOFT

Flash of faux text

FOFT

Flash of faux text

*Liebe Gerda,
wir müssen reden.*

LiebeGerda-Regular.woff 893 KB

LiebeGerda-RegularItalic.woff 974 KB

LiebeGerda-Bold.woff 1.3 MB

LiebeGerda-BoldItalic.woff 1.3 MB

```

```

| | |
|---------------------|---------|
| LiebeGerda-1200.png | 27.3 KB |
| LiebeGerda-900.png | 18.4 KB |
| LiebeGerda-750.png | 14.4 KB |
| LiebeGerda-600.png | 10.8 KB |

FOCS

Flash of Comic Sans

Die Art des Inhalts und der Interaktionen setzen gewisse Grenzen; die Bedürfnisse und Ziele der Nutzer setzen andere.

Die Tätigkeit des Webdesigns besteht nun darin, diese Grenzen auszuloten und in Einklang zu bringen.

— Laura Kalbag, *Accessibility for Everyone*