

GIULIA LACO

# VARIABLE FONTS

THE FUTURE OF TYPOGRAPHY HAS ALREADY BEGUN

NOVEMBER 23<sup>rd</sup> , 2019 - WORDCAMP MILANO

# WORDCAMP MILANO 2019



VARIABLE FONTS

---

**DEFINITION**

# VARIABLE FONTS



# PREMISE

# DEFINITIONS

## TYPEFACE

concept

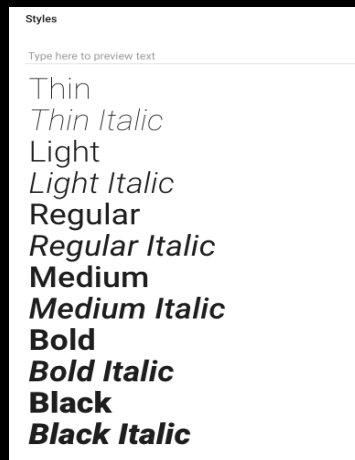
Roboto

## TYPEFACE FAMILY

roman, italic, condensed,  
extended

## FONT

file



## FONT FAMILY

font-family (CSS)

# EVOLUTION

## TYPEFACE FAMILIES

beginning of 1500

Roman vs. Italic – different types

1700

First typeface families (Roman and italic pairing)

1900

Bigger families (*condensed*, *extended*)

# TERMINOLOGY

## ENGLISH

---

### Character width

*COMPRESSED*  
*CONDENSED*  
*REGULAR OR MEDIUM*  
*WIDE*  
*EXTENDED*

### Character weight

*EXTRA LIGHT*  
*LIGHT OR THIN*  
*REGULAR OR MEDIUM*  
*SEMIBOLD*  
*BOLD*  
*EXTRA BOLD OR BLACK*

## ITALIAN

---

*STRETTISSIMO*  
*STRETTO*  
*NORMALE*  
*LARGO*  
*LARGHISSIMO*

*CHIARISSIMO*  
*CHIARO*  
*NORMALE*  
*NERETTO*  
*NERO*  
*NERISSIMO*

# WHO ASKED FOR VARIABLE FONTS?

VARIABLE FONTS

# THE PROPONENTS

OpenType Font Variations



ATypI, September 2016

# BROWSER SUPPORT

BROWSER SUPPORT (source: CAN I USE)

# VARIABLE FONTS

March 2018

9,54%  
Global usage





BROWSER SUPPORT (source: CAN I USE)

# VARIABLE FONTS

March 2019

78,26%  
Global usage



BROWSER SUPPORT (source: CAN I USE)

# VARIABLE FONTS

November 2019

87,01%  
Global usage

## Variable fonts - WD

OpenType font settings that allows a single font file to behave like multiple fonts: it can contain all the allowed variations in width, weight, slant, optical size, or any other exposed axes of variation as defined by the font designer. Variations can be applied via the `font-variation-settings` property.

Usage  
Global 87.1% + 0.5% = 87.6%  
Italy 90.11% + 0.13% = 90.24%

Current aligned	Usage relative	Date relative	Apply filters	Show all	?										
IE	Edge	Firefox	Chrome	Safari	Opera	iOS Safari	Opera Mini	Android Browser	Opera Mobile	Chrome for Android	Firefox for Android	UC Browser for Android	Samsung Internet	QQ Browser	Baid Browser
		2-52													
		53-57	4-58												
		58-59	59-61		10-48										
		60	62-65		49-52										
	12-16	61	66	3.1-10.1	53	3.2-10.3							4-7.4		
6-10	17	62-69	67-77	11-12.1	54-63	11-12.4		2.1-4.4.4	12-12.1				8.2-9.2		
11	18	70	78	13	64	13.2	all	76	46	78	68	12.12	10.1	1.2	7.1
	76	71-72	79-81	TP											

Notes Known issues (1) Resources (8) Feedback

<sup>1</sup> Works with Experimental Web Platform features enabled

<sup>2</sup> Requires MacOS 10.12+ and the following about:config flags to be enabled:

`layout.css.font-variantations.enabled,`  
`gfx.downloadable_fonts.keep_variation_tables`

<sup>3</sup> Requires MacOS 10.13+

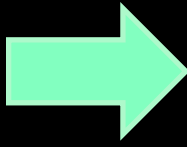
<sup>4</sup> Does not support the `font-weight` and `font-stretch` properties.

<sup>5</sup> Does not support `format('true-type-variantations')`, `format('woff-variantations')`, `format('woff2-variantations')`

<sup>6</sup> Does not support OpenType-CFF2 fonts

# WHAT IS A VARIABLE FONT?

# EVOLUTION

OpenType  OpenType 1.8

# DEFINITION

*“A variable font is  
a single font file  
**THAT BEHAVES LIKE**  
multiple fonts.”*

— John Hudson, Sept. 2016

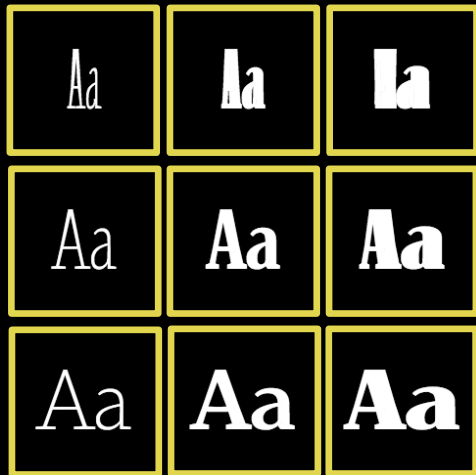
# OPPOSITION

**“STATIC” FONTS**

**VARIABLE FONTS**

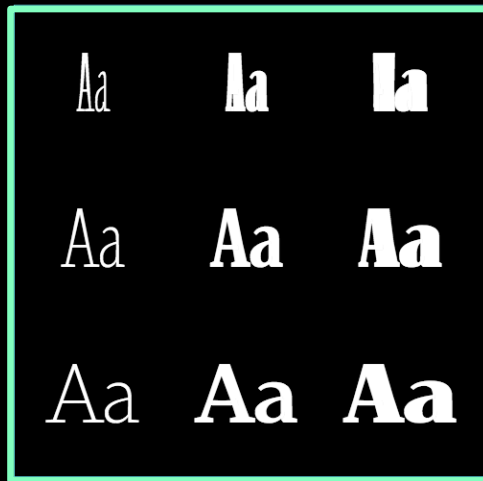
# FILE DIFFERENCES

## STATIC FONTS



many files

## VARIABLE FONT



one file

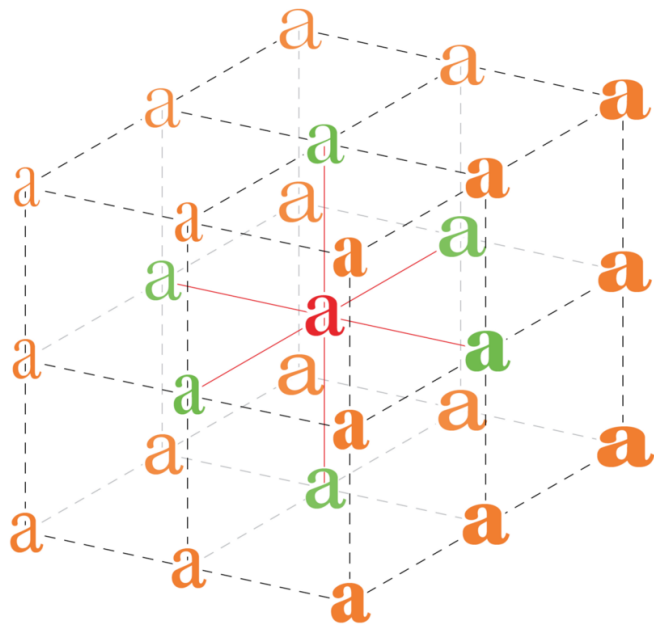
# DEFINITION

A *variable font* is  
a single font file  
**THAT BEHAVES LIKE**  
multiple *[static] fonts*.



# VARIATION AXES

# VARIABLE FONTS VARIATION AXES

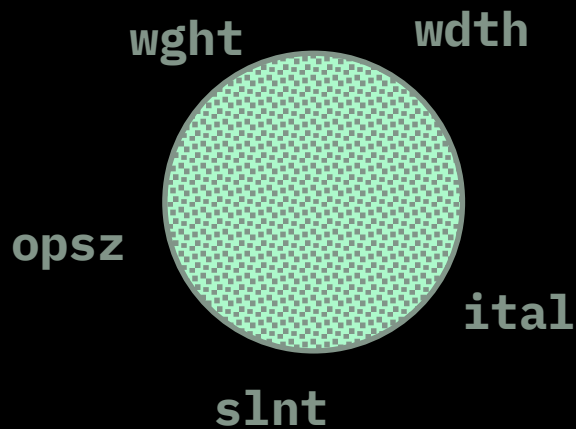


<https://medium.com/variable-fonts/https-medium-com-tiro-introducing-opentype-variable-fonts-12ba6cd2369>

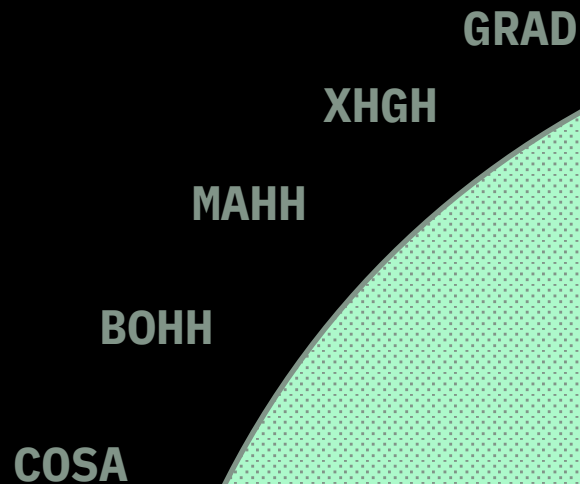
VARIABLE FONTS

# VARIATION AXES

## REGISTERED AXES

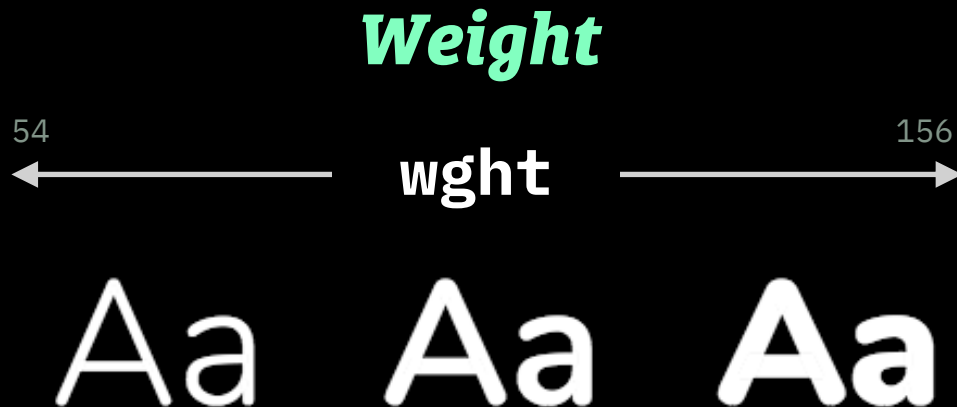


## CUSTOM AXES



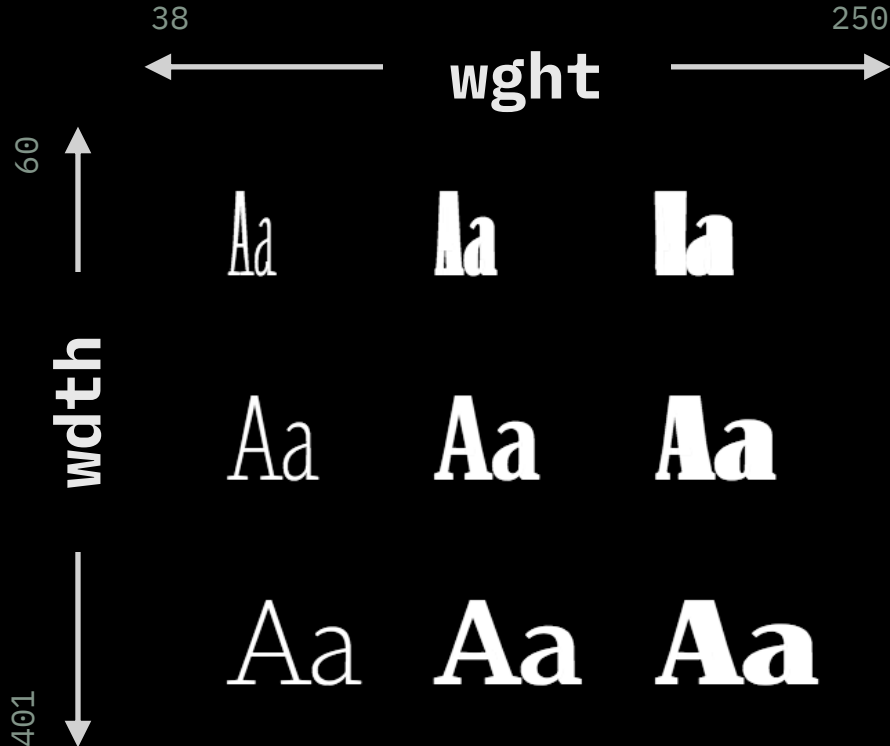
# REGISTERED AXES

- 1. Weight***
- 2. Width***
- 3. Optical Size***
- 4. Slant***
- 5. Italic***

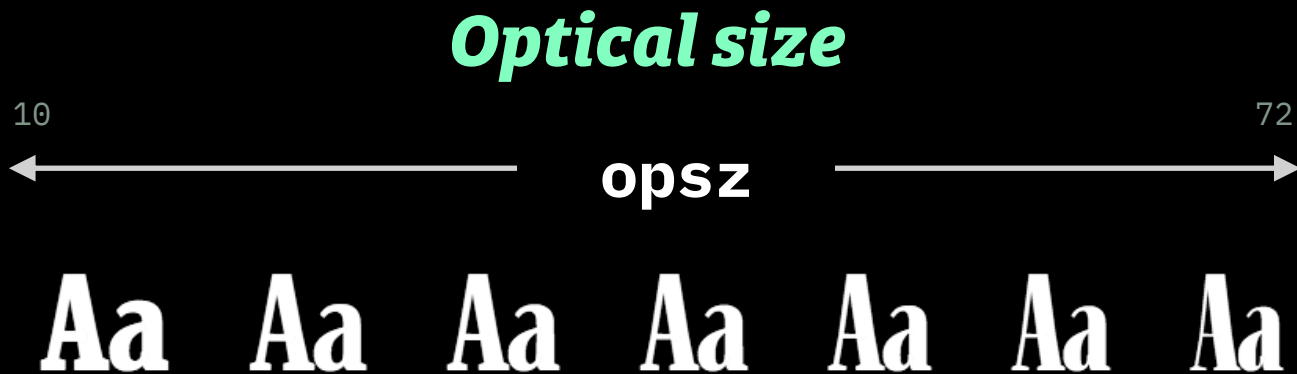


Nunito by Vernon Adams

## REGISTERED AXES

*Width*

Amstelvar Alpha by David Berlow





OPTICAL SIZE

# METAL TYPES



# *optical-size + font-size*

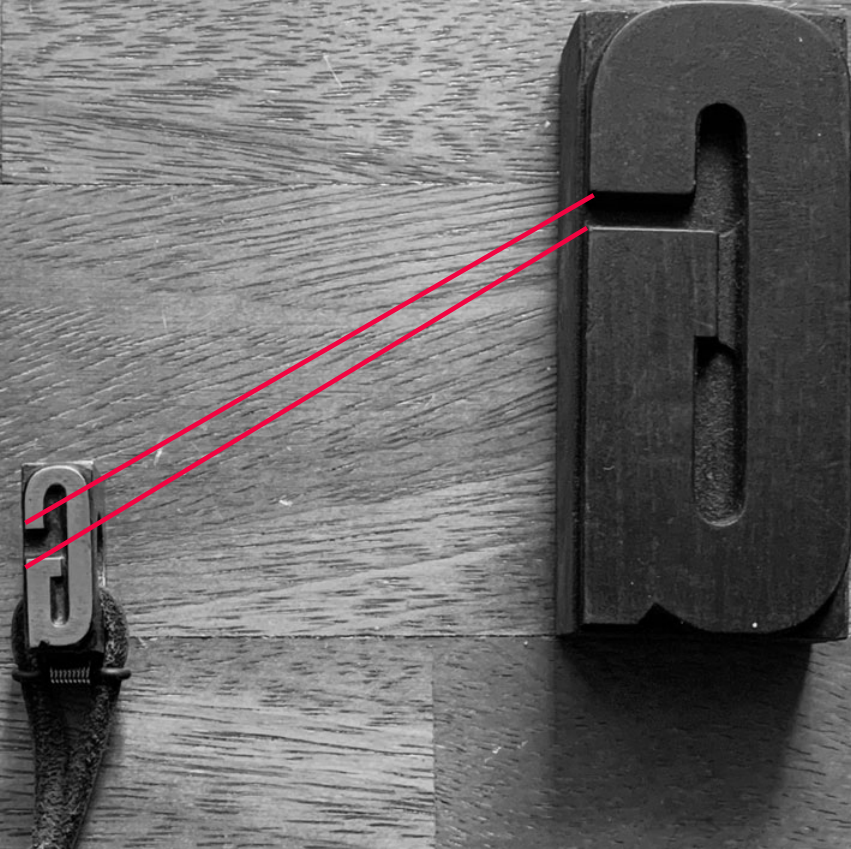
**Aa Aa Aa Aa Aa Aa Aa**

SMALL ← CSS font-size → BIG

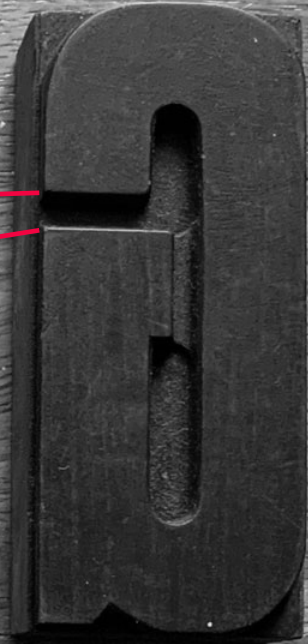
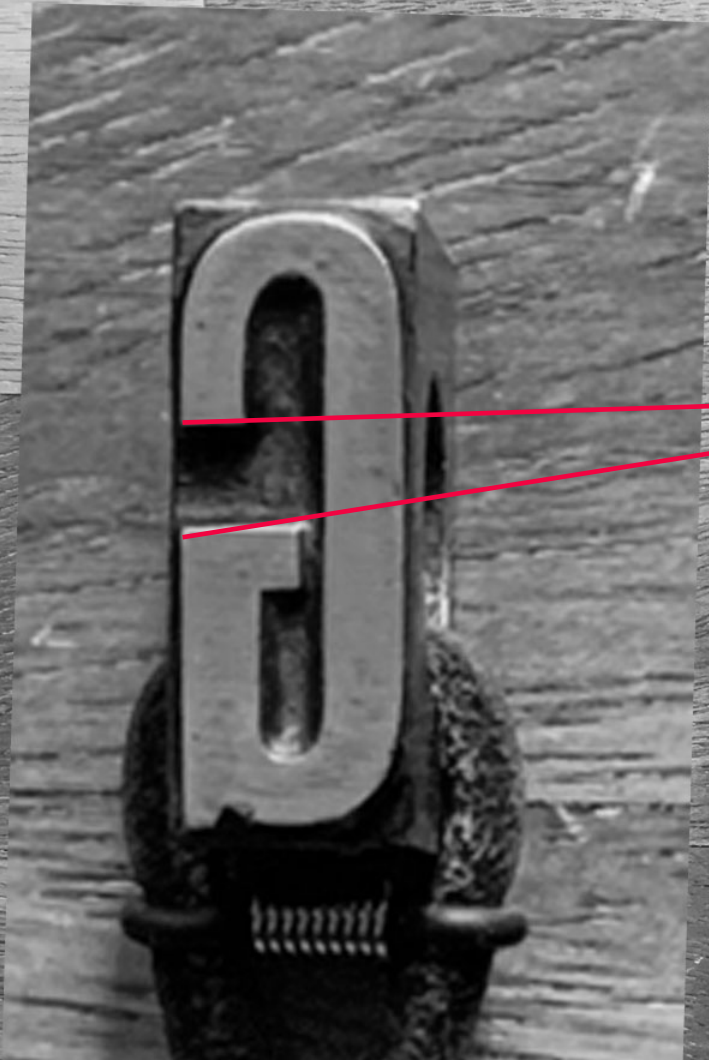
**Aa Aa Aa Aa Aa Aa Aa**

← optical-size →

FOR SMALL SIZES FOR BIG SIZES







*Slant*

← `sInt` →

Aa Aa Aa

VARIABLE FONTS  
REGISTERED AXES



Times New Roman (static fonts)

# VARIABLE FONTS INTERPOLATION

**Samsa** VARIABLE FONT INSPECTOR

▼ Info  
Inter.otf (779716 bytes)  
Full name: Inter

▼ UI  
☒ split arrows  
☒ total arrows

▼ Axes

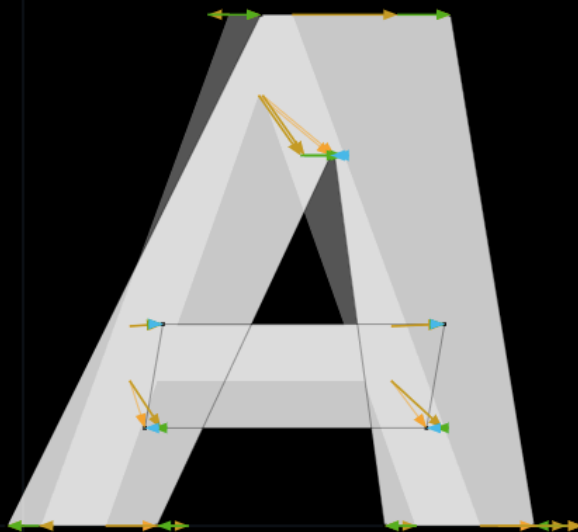
Tag	Name	Weight	Slant
Weight	Weight	100 400 900 900	
Slant	Slant	-10 0 0 -10	

Add instance

▼ Instances

Icon	Font Style	Weight	Slant
Home	A Default	400	0
Bookmark	A Thin	100	0
Bookmark	A Thin Italic	100	-10
Bookmark	A Extra Light	200	0
Bookmark	A Extra Light Italic	200	-10
Bookmark	A Light	300	0
Bookmark	A Light Italic	300	-10
Bookmark	A Regular	400	0

*Inter.otf*



Samsa - inspection tool <https://github.com/Lorp/samsa>

# Italic + Slant

← **ital** → + ← **slnt** →

**Roslindale Variable Italic**

Italic: 0  1  
Slant: -8  0

An experiment in italicization, this one-off member of the *Roslindale* type series can vary its italic forms separately from the angle of slanting. The vast majority of typefaces change italic forms along with slanting, so this may be the first case of both the registered 'italic' and 'slant' axes being used in the same variable font.

Design: David Jonathan Ross  
Publisher: DJR  
Characters: Latin  
Release: 2019-01-01  
Licensing: Paid/commercial  
Info/fonts: [djr.com](http://djr.com)

**ABCDEFGHIJKLMNOPQRSTUVWXYZ  
abcdefghijklmnopqrstuvwxyz 01234567  
89**

**Roslindale Variable Italic**

Italic: 0  1  
Slant: -8  0

An experiment in italicization, this one-off member of the *Roslindale* type series can vary its italic forms separately from the angle of slanting. The vast majority of typefaces change italic forms along with slanting, so this may be the first case of both the registered 'italic' and 'slant' axes being used in the same variable font.

Design: David Jonathan Ross  
Publisher: DJR  
Characters: Latin  
Release: 2019-01-01  
Licensing: Paid/commercial  
Info/fonts: [djr.com](http://djr.com)

**ABCDEFGHIJKLMNOPQRSTUVWXYZ  
abcdefghijklmnopqrstuvwxyz 01234567  
89**



# CUSTOM AXES

# Recursive

```
font-size: 16vw;
/* set variation axis values */
--mono: "MONO" 0;
--casl: "CASL" 0;
--wght: "wght" 800;
--slnt: "slnt" 0;
--ital: "ital" 0.5;

/* Monospace: Sans (natural-width) or Mono (fixed-width) */
/* Casual: Linear to Casual */
/* Weight: Light to ExtraBlack - usually set with 'font-weight' */
/* Slant: 0 to -15 degrees */
/* Italic: always roman, auto, or always italic */

/* apply axis values with CSS custom properties */
font-variation-settings: var(--mono), var(--casl), var(--wght), var(--slnt), var(--ital);
```

## POSSIBLE VARIATION AXES

---

**> 64.000**

## HEADING

AmstelvarAlpha Default



Contrast



Grade



Optical Size



ParaWidth



ParaWeight



Serif Rise



Width



Weight



xHeight



# Variable Fonts

Hello World

GRASS

**TOO MANY?**

# NAMED INSTANCES





# Gingham

## Gingham

# Gingham

an experimental variable font by  
berlin. It has two axes, weight and  
very limited character set consisting of  
lowercase basic Latin alphabet, plus a  
on. The font is based on an unfinished

### TEXTBOX

Textbox

top-heading-1

Font

Gingham Regular

Drag & drop fonts here

Font size

130.0 px

Line-height

Alignment

CSS

New textbox

Delete textbox

### FONT VARIATIONS

Instance

Weight

Width

FONT FEAT

ss01

COLOUR

- ✓ Condensed Light (default)
- Condensed Regular
- Condensed Bold
- Light
- Regular**
- Bold
- Wide Light
- Wide Regular
- Wide Bold

VARIABLE FONTS

---

**ADVANTAGES**

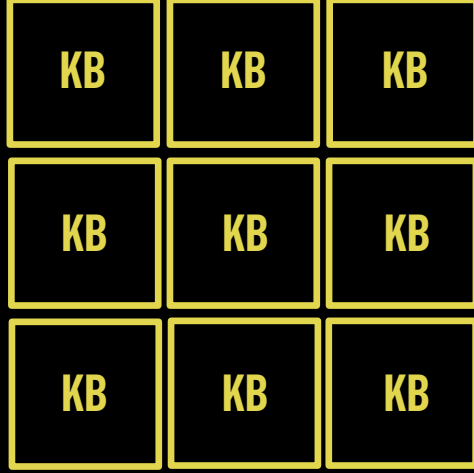
# PERFORMANCE

VARIABLE FONTS

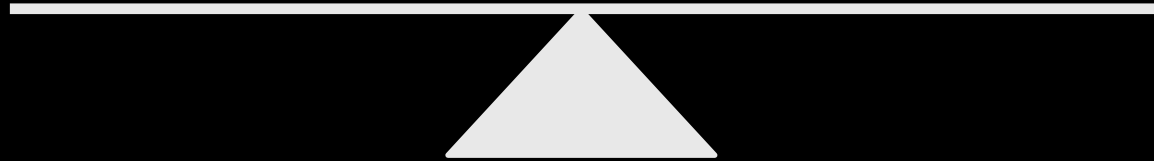
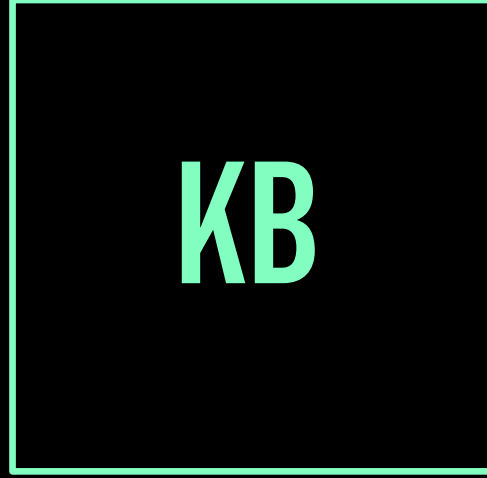
PERFORMANCE

WEIGHT

STATIC FONTS



VARIABLE FONT



# PERFORMANCE

## REMEMBER TO

- use the compressed format: woff2
- consider to do a subsetting (depending on the licence )
- use web font loading best practices

# OPTICAL SIZE

**Aa Aa Aa Aa Aa Aa Aa**



# FINE TUNING

# COMPRESSA

# EXPANDA

sa is a geometric, sans serif typeface inspired by European  
the mid-20th century. PRO-Font has numerous sets of  
small caps and alternative characters for additional  
y. This flexible workhorse gives signs, product labels,  
ds and sports team logos an uncompromising look.

portions, fit and details are designed for  
allest dimensions and each of its weights  
dths contains the most important feature  
liable text surface. Enhanced fonts with  
hapes and fractions allow designers to  
e fonts for the most complex information.  
ompressa is characterized by a wide  
of instances, from thin condensed to

## TEXTBOX

Textbox

Font

Font size

Line-height

Alignment

CSS New text

## FONT VARIANTS

Instance

Weight

Width

Italic

## FONT FEATURES

aalt c2sc

liga lnum

sinf smcp

## COLOUR



ExtraCn Heavy  
ExtraCn Thin It  
ExtraCn UltraLight It  
ExtraCn Light It  
ExtraCn Regular It  
ExtraCn Medium It  
ExtraCn Bold It  
ExtraCn Black It  
ExtraCn Heavy It  
Cn Thin  
Cn UltraLight  
Cn Light  
Cn Regular  
Cn Medium  
Cn Bold  
Cn Black  
Cn Heavy  
Cn Thin It  
Cn UltraLight It  
Cn Light It  
Cn Regular It  
Cn Medium It  
Cn Bold It  
Cn Black It  
Cn Heavy It  
Neutral Thin  
Neutral UltraLight  
Neutral Light  
Neutral Regular  
Neutral Medium  
Neutral Bold It  
Neutral Black  
Neutral Heavy  
Neutral Thin It  
Neutral UltraLight It  
Neutral Light It  
Neutral Regular It  
Neutral Medium It  
Neutral Bold It  
Neutral Black It  
Neutral Heavy It  
Exp Thin  
Exp UltraLight  
Exp Light

Font

here

px

↺

↺

↺

frac ital

pnum salt

zero

# ADAPTATION TO LANGUAGES

# RESPONSIVE / FLUID WEB

VARIABLE FONTS

---

**DISADVANTAGES**

# CHOICE

# PRICE

**CRIMINAL POTENTIAL** 😊

*typographic crimes*



VARIABLE FONTS

---

# IMPLEMENTATION

# CSS PROPERTIES

# VARIABLE FONTS LOW LEVEL CSS

```
font-variation-settings:
```

```
"wght" 54;
```

1 AXIS

```
font-variation-settings:
```

```
"wght" 38, "wdth" 401;
```

2 AXES

```
font-variation-settings:
```

```
"wght" 38, "wdth" 401, "opsz" 203;
```

3 AXES

## LOW LEVEL CSS

*font-variation-settings:*

## CSS4

***Weight***

"**wght**" 38

**font-weight:** 38; [**1-999**]

***Width***

"**wdth**" 125

**font-stretch:** 125%; [**100% is normal**]

***Optical size***

"**opsz**" 51

**font-optical-sizing:** auto; [**auto/none**]

***Slant***

"**slnt**" 15

**font-style:** oblique 15deg; \* [**-90deg-90deg**]

***Italic***

"**ital**" 1

**font-style:** italic; \* [**italic/normal**]

---

\* Add **font-synthesis:** none;

# FALLBACK: FONT STACK

# VARIABLE FONTS FONT STACK

font-family:

"Typeface VF", "Typeface", Helvetica, sans-serif;

Variable webfont

Static webfont

websafe system  
font

default system font  
(generic name)

NO

# VARIABLE FONTS FEATURE QUERY

## @SUPPORT

```
body {  
  font-family: "Typeface", sans-serif;  
}
```

```
@supports (font-variation-settings: normal) {  
  body {  
    font-family: "Typeface VF", sans-serif;  
  }  
}
```

**@FONT-FACE**



# @FONT-FACE

```
@font-face {  
  font-family: "Typeface VF";  
  src: url('Typeface_VF.woff2') format('woff2-variations'),  
       url('Typeface_VF.woff2') format('woff2');  
  ...  
}
```

```
@font-face {  
  font-family: "Typeface";  
  src: url('Typeface_Regular.woff2') format('woff2');  
}
```

```
@font-face {  
  font-family: "Typeface";  
  src: url('Typeface_Bold.woff2') format('woff2');  
  font-weight: 700;  
}
```

# GOOGLE FONTS API

## CURRENT API FOR STATIC FONTS

`//fonts.googleapis.com/css?family=Roboto:700`

## NEW API FOR VARIABLE & STATIC FONTS

`//fonts.googleapis.com/css2?family=Roboto:wght@700`



# WHERE CAN I FIND THEM?

## GOOGLE FONTS EARLY ACCESS

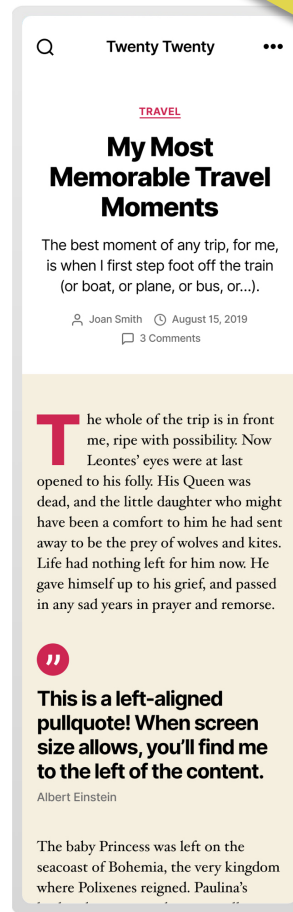
```
@import url(https://fonts.googleapis.com/earlyaccess/cabinvfbeta.css);  
@import url(https://fonts.googleapis.com/earlyaccess/amstelvaralpha.css);  
@import url(https://fonts.googleapis.com/earlyaccess/nunitovfbeta.css);
```

Updated August 28, 2019

Family	Style	Axis	Min	Max	Demo
<a href="#">Comfortaa</a>	normal	wght	300	700	Lorem ipsum
<a href="#">Crimson Pro</a>	normal	wght	200	900	Lorem ipsum
<a href="#">Crimson Pro</a>	italic	wght	200	900	<i>Lorem ipsum</i>
<a href="#">Dosis</a>	normal	wght	200	800	Lorem ipsum
<a href="#">Fira Code</a>	normal	wght	300	700	Lorem ipsum
<a href="#">Hepta Slab</a>	normal	wght	1	900	Lorem ipsum
<a href="#">Kreon</a>	normal	wght	300	700	Lorem ipsum
<a href="#">Literata</a>	normal	wght	400	700	<b>Lorem ipsum</b>
<a href="#">Literata</a>	italic	wght	400	700	<i><b>Lorem ipsum</b></i>
<a href="#">Markazi Text</a>	normal	wght	400	700	<b>Lorem ipsum</b>
<a href="#">Oswald</a>	normal	wght	200	700	Lorem ipsum
<a href="#">Quicksand</a>	normal	wght	300	700	Lorem ipsum

Available with  
NEW GOOGLE FONTS API

# VARIABLE FONTS WHERE TO FIND



WordPress  
Twenty Twenty theme

# VARIABLE FONTS WHERE TO FIND

- Check your creative software
- Font distributors & market places
- ... ask your trusted foundry



VARIABLE FONTS

---

**TOOLS**

# VARIABLE FONTS TOOLS

axis-praxis.org



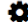



AXISPRAXIS

playground

blog

resources

donate



Introduction

MY SPECIMENS


SPECIMENS

NEW

PT Root UI  
方正悠黑  
文鼎晶熙黑  
晶熙ゴシック体  
Amstelvar  
Avenir Next  
Bitcount  
Bree  
Buffalo Gal  
Compressa  
Decovar  
DIN 2014  
Dunbar

## Axis-Praxis is a website for playing with OpenType Variable Fonts

Discover 30+ variable fonts. Experiment with the typographic controls in the right panel on this default layout, or choose a typeface specimen from the left column. Every textbox is fully editable: change font, font size, alignment, line-spacing as well as the variation sliders. And type your own text, of course.



TEXTBOX

Textbox

Font

Font size

Line-height

Alignment

CSS New textbox Delete textbox

FONT VARIATIONS

Instance

Weight

Optical Size

FONT FEATURES

COLOUR

heading1

Zeitung Pro Regular

Drag & drop fonts here

84 px

Thin

860.84

20

c2sc calt case dnom frac liga lnum locl numr onum pnum sinf smcp ss01 subs sups tnum zero

Font makers can try out their own variable fonts. Just drag any variable TTF to the right panel, the current textbox gets set to that font, and its axes show up right away in the Font Variation section.

# VARIABLE FONTS TOOLS

v-fonts.com

## Variable Fonts (beta)

A simple resource for finding and trying variable fonts



### Objektiv VF

Weight: 100  900  
Italic: 0  1

A geometric-ish sans that works as a companion to [Mokoko](#).

Design: Dalton Maag Ltd.  
Publisher: Dalton Maag Ltd.  
Characters: Latin  
Release: 2019-03-08  
Licensing: Paid/commercial, Trial  
Info/fonts: [daltonmaag.com](https://daltonmaag.com)

ABCDEFGHIJKLMNOPQRSTUVWXYZ abcdefghijklmn  
opqrstuvwxyz 0123456789

### Mokoko VF

Weight: 100  900  
Italic: 0  1

A geometric-ish slab serif that works as a companion to [Objektiv](#).

Design: Dalton Maag Ltd.  
Publisher: Dalton Maag Ltd.  
Characters: Latin  
Release: 2019-03-08  
Licensing: Paid/commercial, Trial  
Info/fonts: [daltonmaag.com](https://daltonmaag.com)

ABCDEFGHIJKLMNOPQRSTUVWXYZ abcdefghijklm  
nopqrstuvwxyz 0123456789

# VARIABLE FONTS TOOLS

[play.typedetail.com](https://play.typedetail.com)

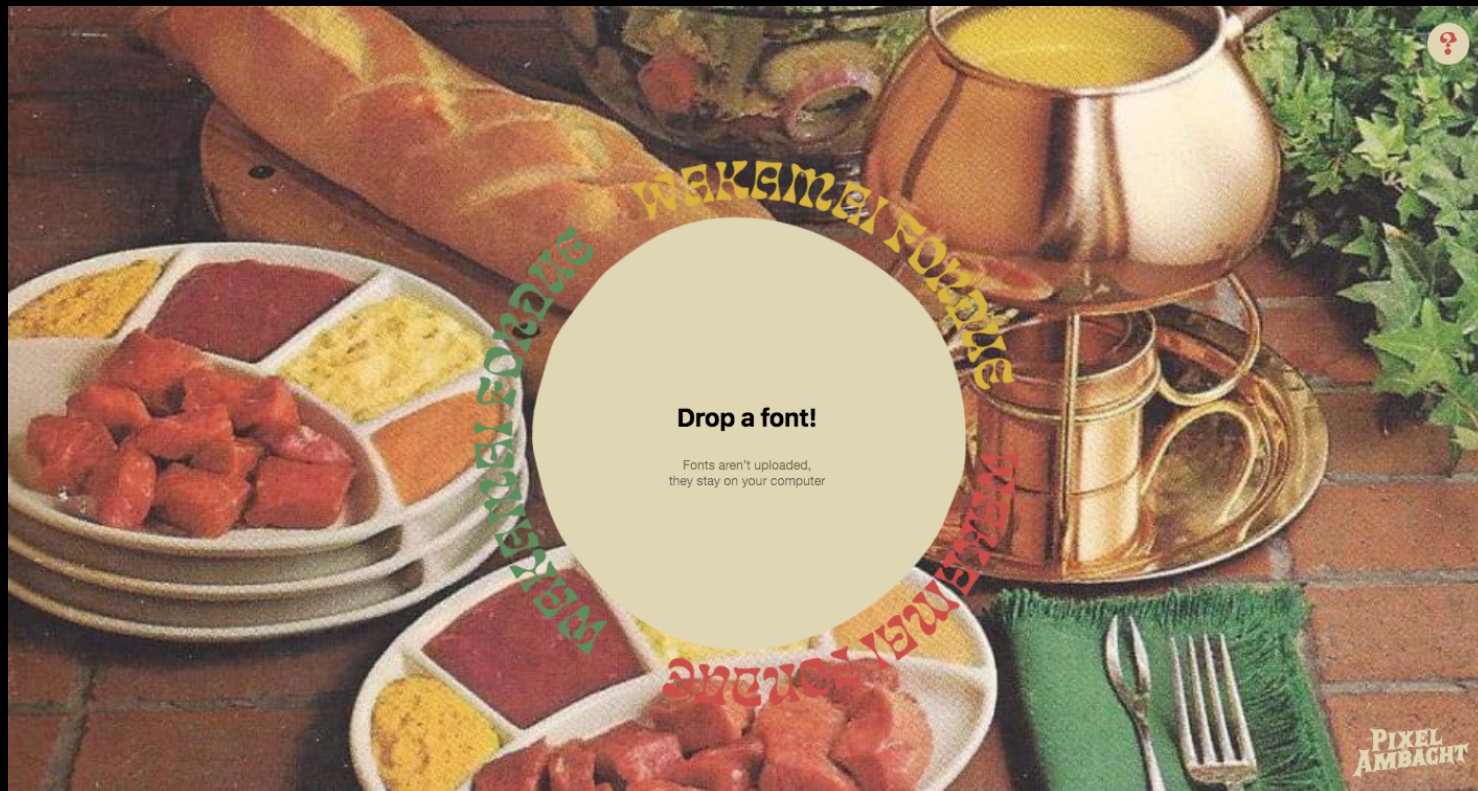
The screenshot shows the Font Playground web application. The interface is divided into several sections:

- Font Family:** A search bar with the text "Renner\*" and a list of font families including Rhody, Roslindale Beta, Roslindale Beta Italic (selected), San Francisco Display, San Francisco Text, and San Francisco Text Italic.
- Font Info:** A section for the selected font, Roslindale Beta Italic, showing the designer David Jonathan Ross, publisher DJR, license Paid/commercial, and link djr.com.
- Design Panel:** The main area displaying the font's name "Font Playground Presents: FONTS BY DJ" in a large, outlined, variable font style. Below the name, a tip is shown: "\*Tip: try search by designer name or foundry name, eg. DJ".
- Font Size:** A slider set to 100.
- Preset Variations:** A section with three variations: Bold Upright Italic (Ag), Bold Italic (Ag), and Bold (Ag).
- Variable Options:** A section with three sliders: Italic (set to 1), Slant (set to 0.00), and a third slider (set to 0.00).

VARIABLE FONTS

# TOOLS

[wakamaifondue.com](http://wakamaifondue.com)



VARIABLE FONTS

---

**POTENTIALS**

# MULTIMEDIA INTERFACES

VARIABLE FONTS

# INPUT

PHONE MOVEMENT

VARIATION AXES:  
WEIGHT, WIDTH



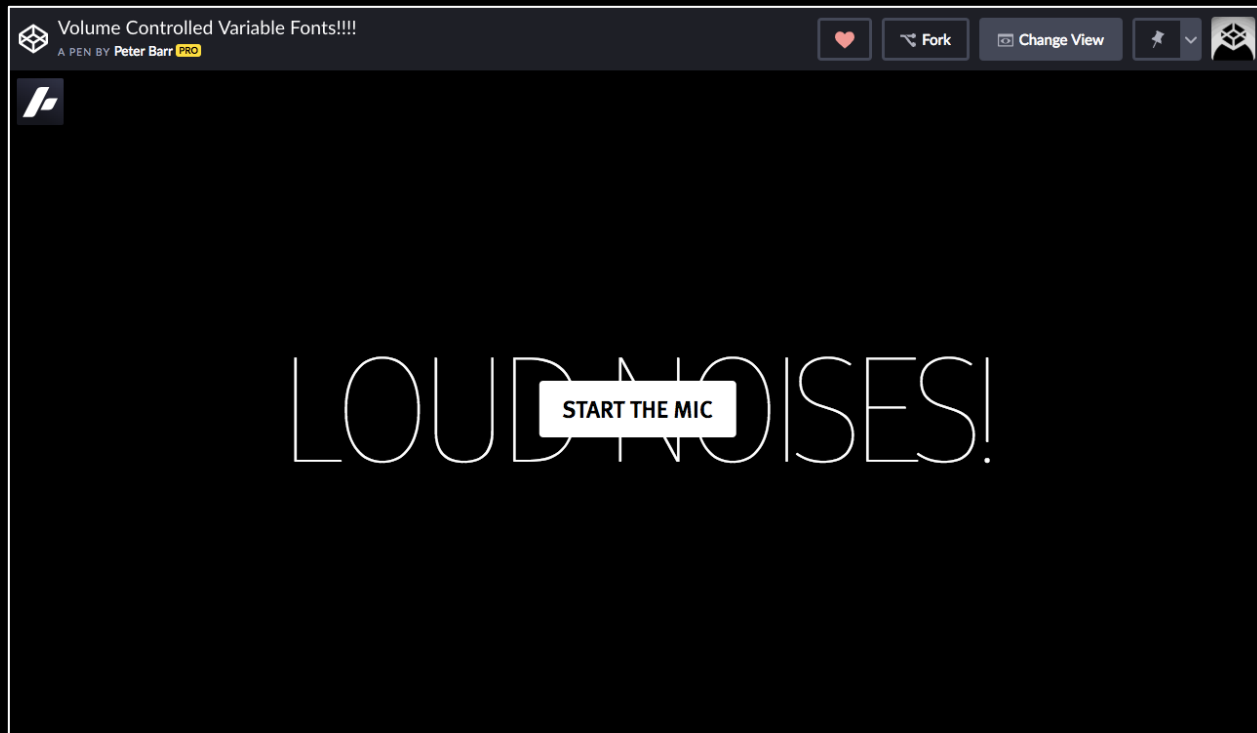


VARIABLE FONTS

# INPUT

AUDIO

VARIATION AXES:  
WEIGHT, WIDTH



A pen by Peter Barr <https://codepen.io/petebarr/full/yGeMxr>

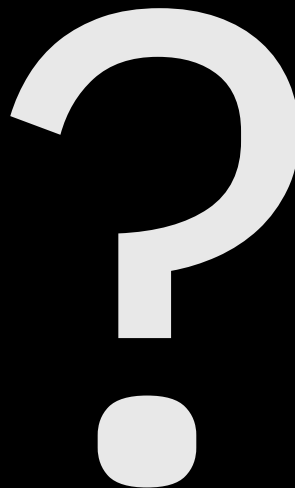
VARIABLE FONTS

# INPUT

PRESSURE SENSOR DEVICE

VARIATION AXES:

WEIGHT



# ADAPTATION TO THE ENVIRONMENT

VARIABLE FONTS

# GRADE AXIS

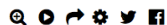
**AXIS**PRAXIS

playground

blog

resources

donate



Introduction

MY SPECIMENS

SPECIMENS

PT Root UI  
方正悠黑  
文鼎晶熙黑  
晶熙ゴシック体  
Amstelvar  
Avenir Next  
Bitcount  
Bree  
Buffalo Gal  
Compressa  
Decovar  
DIN 2014  
Dunbar  
Fit  
Gingham  
Gnomon  
Grade  
Hela  
Jabin  
dT Jakob  
Jam  
Kairos Sans  
Lab-DJR  
Libre Franklin

## Grade

**A variable font of 2 axes by Adam Twardoch, based on a design by Pablo Impallari, intended to demonstrate smooth variation in typographic grade**

Font appearance varies depending on the technology used for display or printing, sometimes appearing lighter or darker than desired. The type of paper, the type of ink, and other aspects of the printing process can all affect font weight significantly. For example, printing using offset lithography is pretty faithful to original lettershapes, while the gravure method causes some spread. Similar problems occur when using white-on-black text, when fonts appear heavier than black-on-white, whether on paper, screen or illuminated displays.

To address this problem, it is becoming increasingly common for type designers to offer a selection of weights, called 'grades', intended so that the designer can choose the appropriate weight for each situation. Variable adjustment of grade offers the possibility to give fine control over grade to readers of online texts, as well as offering the designer the ability to set a well-chosen default, given the characteristics of a rendering device or colour combination.

Font appearance varies depending on the technology used for display or printing, sometimes appearing lighter or darker than desired. The type of paper, the type of ink, and other aspects of the printing process can all affect font weight significantly. For example, printing using offset lithography is pretty faithful to original lettershapes, while the gravure method causes some spread. Similar problems occur when using white-on-black text, when fonts appear heavier than black-on-white, whether on paper, screen or illuminated displays.

To address this problem, it is becoming increasingly common for type designers to offer a selection of weights, called 'grades', intended so that the designer can choose the appropriate weight for each situation. Variable adjustment of grade offers the possibility to give fine control over grade to readers of online texts, as well as offering the designer the ability to set a well-chosen default, given the characteristics of a rendering device or colour combination.

### TEXTBOX

Textbox

Font

Font size  px

Line-height

Alignment

### FONT VARIATIONS

Instance

Width  %

Grade  %

### FONT FEATURES

#### COLOUR



## Introduction

### MY SPECIMENS

### SPECIMENS

NEW PT Root UI  
方正悠黑  
文鼎晶熙黑  
晶熙ゴシック体  
Amstelvar  
Avenir Next  
Bitcount  
Bree  
Buffalo Gal  
Compressa  
Decovar  
DIN 2014  
Dunbar  
Fit  
Gingham  
Gnomon  
Grade  
Hela  
Jabin  
dT Jakob  
Jam  
Kai

# Grade

A variable font of 2 axes by Adam Twardoch, based on a design by Pablo Impallari, intended to demonstrate smooth variation in typographic grade

Font appearance varies depending on the technology used for display or printing, sometimes appearing lighter or darker than desired. The type of paper, the type of ink, and other aspects of the printing process can all affect font weight significantly. For example, printing using offset lithography is pretty faithful to original lettershapes, while the gravure method causes some spread. Similar problems occur when using white-on-black text, when fonts appear heavier than black-on-white, whether on paper, screen or illuminated displays.

To address this problem, it is becoming increasingly common for type designers to offer a selection of weights, called 'grades', intended so that the designer can choose the appropriate weight for each situation. Variable adjustment of grade offers the possibility to give fine control over grade to readers of online texts, as well as offering the designer the ability to set a well-chosen default, given the characteristics of a rendering device or colour combination.

Font appearance varies depending on the technology used for display or printing, sometimes appearing lighter or darker than desired. The type of paper, the type of ink, and other aspects of the printing process can all affect font weight significantly. For example, printing using offset lithography is pretty faithful to original lettershapes, while the gravure method causes some spread. Similar problems occur when using white-on-black text, when fonts appear heavier than black-on-white, whether on paper, screen or illuminated displays.

To address this problem, it is becoming increasingly common for type designers to offer a selection of weights, called 'grades', intended so that the designer can choose the appropriate weight for each situation. Variable adjustment of grade offers the possibility to give fine control over grade to readers of online texts, as well as offering the designer the ability to set a well-chosen default, given the characteristics of a rendering device or colour combination.

### TEXTBOX

Textbox

text-left

Font

GradeGX

Drag & drop fonts here

Font size

18 px

Line-height

Alignment

CSS

New textbox

Delete textbox

### FONT VARIATIONS

Instance

Width

93.9%

Grade

80

### FONT FEATURES

### COLOUR



## Introduction

### MY SPECIMENS

### SPECIMENS

NEW PT Root UI  
方正悠黑  
文鼎晶熙黑  
晶熙ゴシック体  
Amstelvar  
Avenir Next  
Bitcount  
Bree  
Buffalo Gal  
Compressa  
Decovar  
DIN 2014  
Dunbar  
Fit  
Gingham  
Gnomon  
Grade  
Hela  
Jabin  
dT Jakob  
Jam  
Kai

# Grade

A variable font of 2 axes by Adam Twardoch, based on a design by Pablo Impallari, intended to demonstrate smooth variation in typographic grade

Font appearance varies depending on the technology used for display or printing, sometimes appearing lighter or darker than desired. The type of paper, the type of ink, and other aspects of the printing process can all affect font weight significantly. For example, printing using offset lithography is pretty faithful to original lettershapes, while the gravure method causes some spread. Similar problems occur when using white-on-black text, when fonts appear heavier than black-on-white, whether on paper, screen or illuminated displays.

To address this problem, it is becoming increasingly common for type designers to offer a selection of weights, called 'grades', intended so that the designer can choose the appropriate weight for each situation. Variable adjustment of grade offers the possibility to give fine control over grade to readers of online texts, as well as offering the designer the ability to set a well-chosen default, given the characteristics of a rendering device or colour combination.

Font appearance varies depending on the technology used for display or printing, sometimes appearing lighter or darker than desired. The type of paper, the type of ink, and other aspects of the printing process can all affect font weight significantly. For example, printing using offset lithography is pretty faithful to original lettershapes, while the gravure method causes some spread. Similar problems occur when using white-on-black text, when fonts appear heavier than black-on-white, whether on paper, screen or illuminated displays.

To address this problem, it is becoming increasingly common for type designers to offer a selection of weights, called 'grades', intended so that the designer can choose the appropriate weight for each situation. Variable adjustment of grade offers the possibility to give fine control over grade to readers of online texts, as well as offering the designer the ability to set a well-chosen default, given the characteristics of a rendering device or colour combination.

### TEXTBOX

Textbox

text-left

Font

GradeGX

Drag & drop fonts here

Font size

18 px

Line-height

Alignment

CSS

New textbox

Delete textbox

### FONT VARIATIONS

Instance

Width

93.9%

Grade

150

### FONT FEATURES

### COLOUR



VARIABLE FONTS

# INPUT

AMBIENT LIGHT

VARIATION AXES:

GRADE



Tom Lokhorst  
@tomlokhorst

Segui



Changing font grade (weight irrespective of width) based on ambient light. “Heavy” font in low-light. #typography @q42

Traduci il Tweet



21:31 - 1 mar 2017

230 Retweet 453 Mi piace



13 230 453

VARIABLE FONTS

# INPUT

DISTANCE FROM SCREEN

VARIATION AXES:

GRADE?,  
X-HEIGHT





# NEW ENVIRONMENTS

VARIABLE FONTS

# INPUT

CAMERA,  
DATA ...

Fonts for Augmented/Virtual Reality



VARIATION AXES:

PROSPECTIVE  
AXES

Alessia Nicotra & Bruno Maag  
Kerning conference, Faenza - June 8°, 2018

# INFOGRAPHICS

VARIABLE FONTS

INPUT

BIG DATA

VARIATION AXES:

WEIGHT  
SLANT

Untitled  
A PEN BY François Poizat



*Marrakech Moscow Padova*

*Lyon Rennes Tokyo*

*Johannesburg Beijing San*

*Francisco Savissivik Tolhuin Tignes*

A pen by François Poizat <https://codepen.io/FranzPoize/pen/ayYevr>

# ANIMATIONS (SEMANTIC?)

# ACCESSIBILITY, PARTICULAR NEEDS

# EXPRESSIVENESS

VARIABLE FONTS

# EXPRESSIVENESS

Exercise inspired by the work of Sarah Hyndman





VARIABLE FONTS

# EXPRESSIVENESS

Exercise inspired by the work of Sarah Hyndman



***Act now***

***Wake up***

*Laugh*

Think

Calm down

Sleep

+ energy

+ calm

***Thank you***  
*for your attention*

# *Keep in touch*



**FOLLOW / CONTACT**

**WebMatter.it**



@webmatter\_it



giulialaco



giulia.laco

*Subscribe to my newsletter*

**TYPE STRATEGY**



[www.typestrategy.com](http://www.typestrategy.com)

*and show me your creations with variable fonts !*

Colophon

# BALBOA PLUS FILL

Balboa Condensed

Balboa ExtraCondensed

Balboa UltraLight

Balboa Light

Balboa Medium

Balboa Bold

Balboa ExtraBold

Balboa Black

Balboa ExtraBlack

Carl Marx regular

Carl Marx bold

Bree serif regular

*Bree serif italic*

IBM Plesk Mono medium

