

DEVOPS PATTERNS AND ANTIPATTERNS FOR CONTINUOUS UPDATES

WHAT COULD POSSIBLY GO WRONG?

Kat Cosgrove

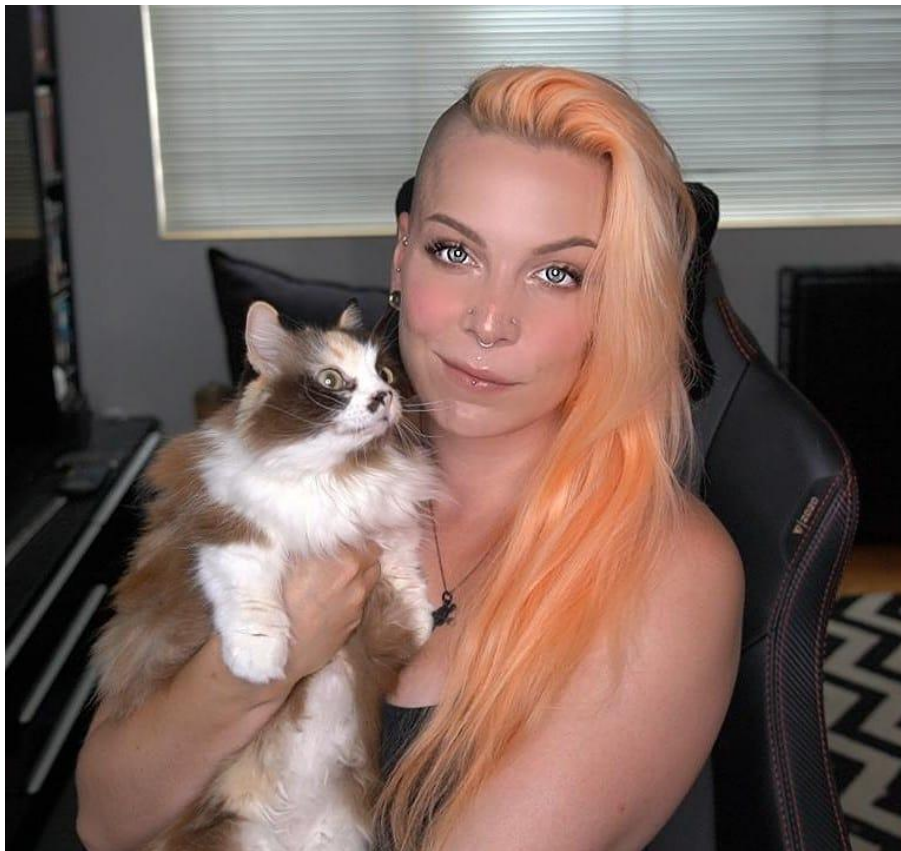
IoT Engineer

Developer Advocate

@Dixie3Flatline

katc@jfrog.com

jfrog.com/shownotes



Why do we update software?

```
└─> bc -v
```

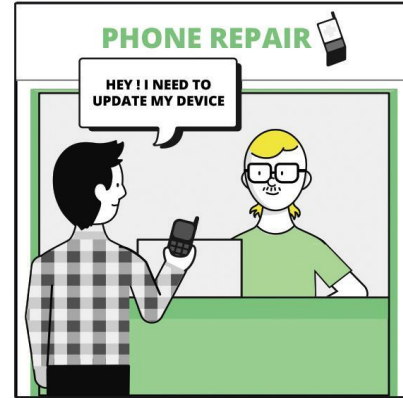
```
bc 1.06
```

```
Copyright 1991-1994, 1997, 1998, 2000 Free Software Foundation, Inc.
```

GIMME



LATE 1990s



@dixie3flatline

@jbaruch

#DODBuf

jfrog.com/shownotes

An aerial photograph of an oil field at dusk or dawn. Several yellow pumpjacks are visible, spaced out across a dark, muddy landscape. The ground is uneven with some patches of green vegetation in the upper left. A quote is overlaid in the center in a bright green, bold, sans-serif font. The quote is enclosed in quotation marks.

**"AS EVERY COMPANY BECOME A SOFTWARE COMPANY,
SECURITY VULNERABILITIES ARE THE NEW OIL SPILLS"**

@dixie3flatline

@jbaruch

#DODBuf

jfrog.com/shownotes



Identify

Fix

Deploy

@dixie3flatline

@jbaruch

#DODBuf


jfrog.com/shownotes

Security

UK hospital meltdown after ransomware worm uses NSA vuln to raid IT

Docs use pen and paper after computers scrambled amid global outbreak

By [Kat Hall](#) 12 May 2017 at 14:22

339  SHARE ▼



Final update UK hospitals have effectively shut down and are turning away non-emergency patients after ransomware ransacked its networks.

Identify

Immediate

Fix

OS Update

Deploy

YEARS

Security

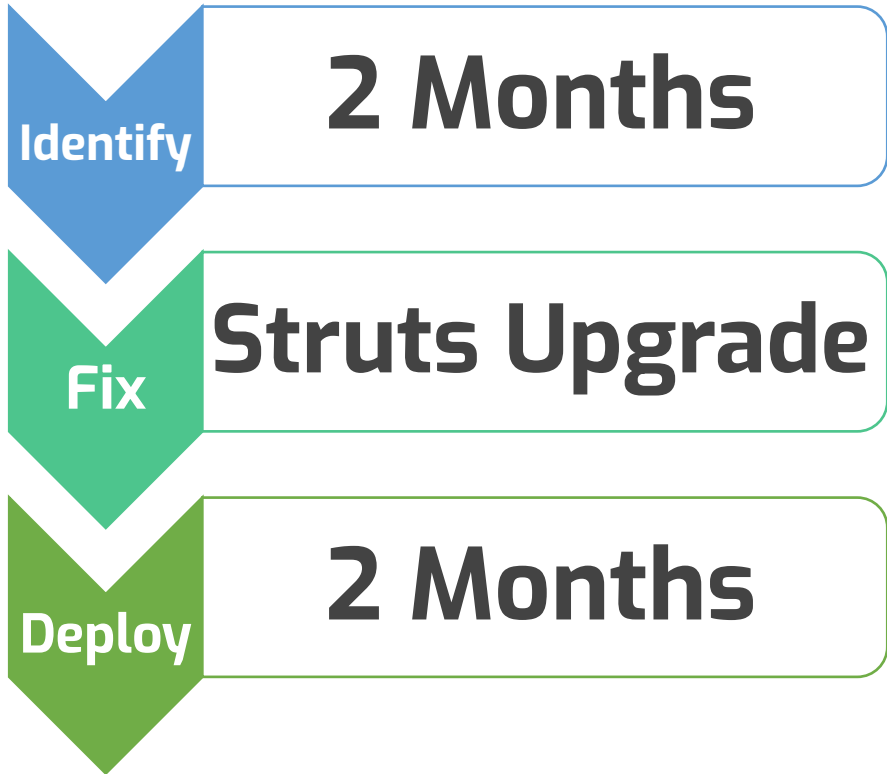
Stand up who HASN'T been hit in the Equifax mega-hack – whoa, whoa, sit down everyone

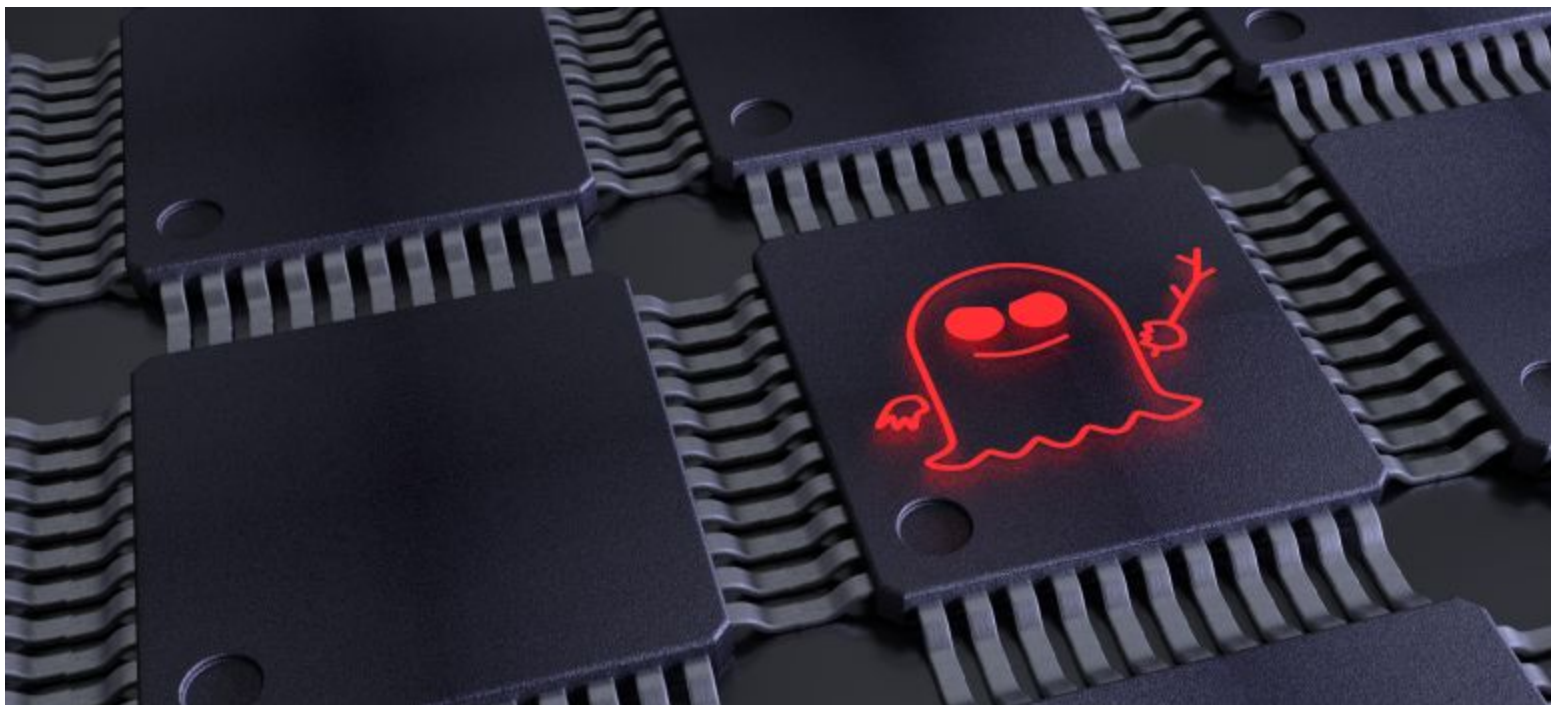
143m in US, unknown number in UK, Canada – gulp!

By [Iain Thomson in San Francisco](#) 7 Sep 2017 at 22:11



Vid Global credit reporting agency Equifax admitted today it suffered a massive breach of security that could affect almost half of the US population.





@dixie3flatline

@jbaruch

#DODBuf

jfrog.com/shownotes

Chips may be inherently vulnerable to Spectre and Meltdown attacks

Most malware exploits coding errors and poor design. But Google security researchers say a fundamental flaw in the nature of computing could make some threats impossible to defeat.

by **Emerging Technology from the arXiv**

Feb 25, 2019

Chips may be inherently vulnerable to Spectre and Meltdown attacks

Most malware exploits coding errors and poor design. But Google security researchers say a fundamental flaw in the nature of computing could make **some threats impossible to defeat.**

by **Emerging Technology from the arXiv**

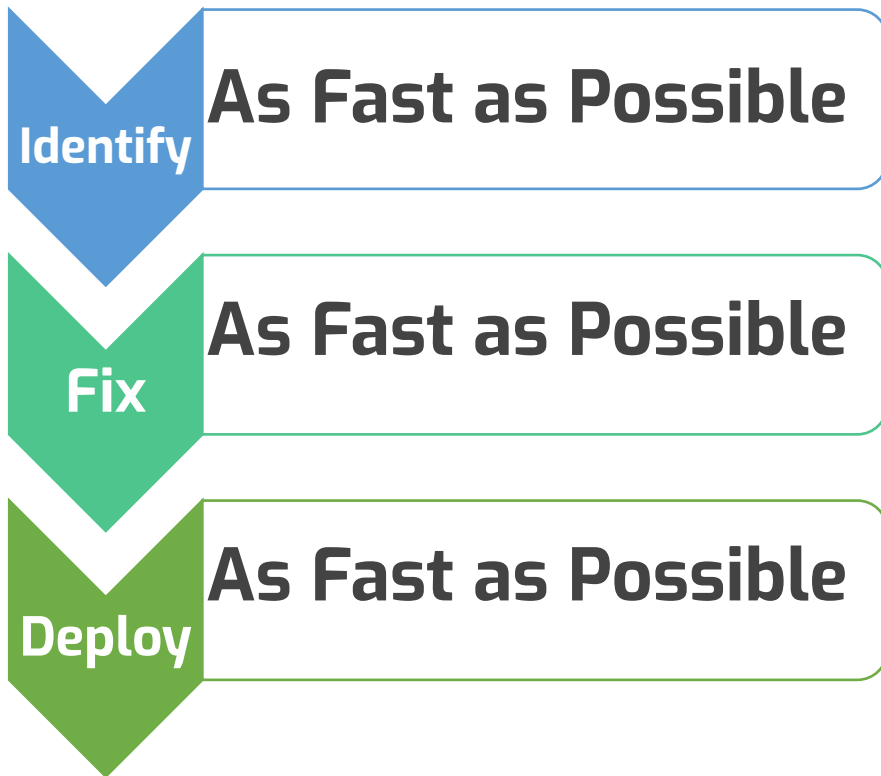
Feb 25, 2019

Chips may be inherently vulnerable to Spectre and Meltdown attacks

Most malware exploits coding errors and poor design. But Google security researchers say a fundamental flaw in the nature of computing could make some threats impossible to defeat.

by **Emerging Technology from the arXiv**

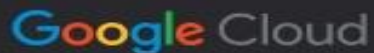
Feb 25, 2019





ACCELERATE State of DevOps 2019

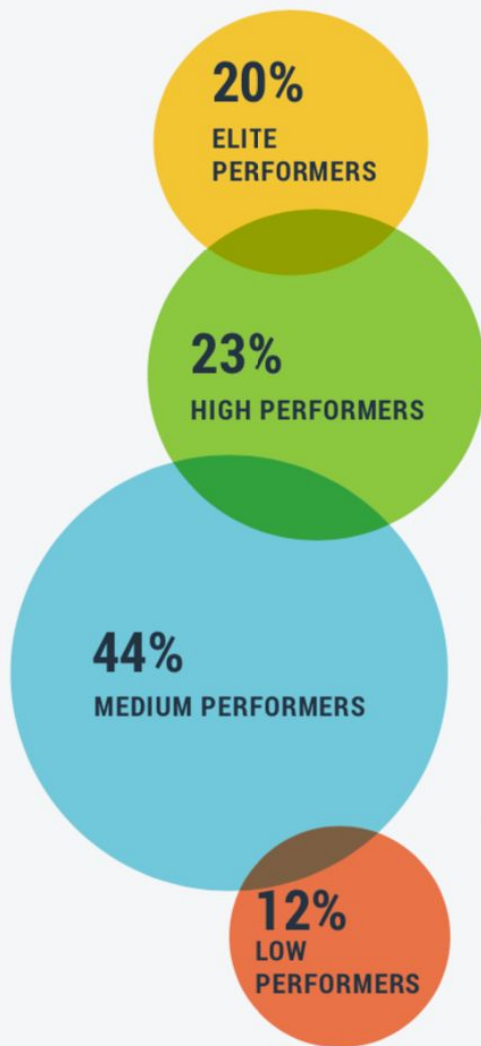
Sponsored by



WHO TOOK THE SURVEY?



DORA's research provides insight into software development and DevOps practices applied in industry, backed by scientific studies spanning six years with **over 31,000 survey responses** from working professionals. This year, almost 1,000² individuals from a range of industries around the world added their voices to the 2019 Report. Overall, we see similar representation across key demographic and firmographic measures when compared to last year, other than a noticeable drop in the reported percentage of women on teams.



Aspect of Software Delivery Performance*

Elite

Deployment frequency

For the primary application or service you work on, how often does your organization deploy code to production or release it to end users?

On-demand
(multiple
deploys per day)

This is not a new idea!

- **XP:** short feedback
- **Scrum:** reducing cycle time to absolute minimum
- **TPS:** Decide as late as possible and Deliver as fast as possible
- **Kanban:** Incremental change

Gotta go
Fast



There's not a moment to lose!

Mark Reinhold

Moving Java Forward Faster

2017/09/06 07:49:28 -07:00

The State of Java: Trends And Data For One of the World's Most Popular Programming Languages



By Ben Evans • Mar. 13th, 2020 • Technology Industry

🔖 [Java](#), [programming languages](#), [trends](#)

...

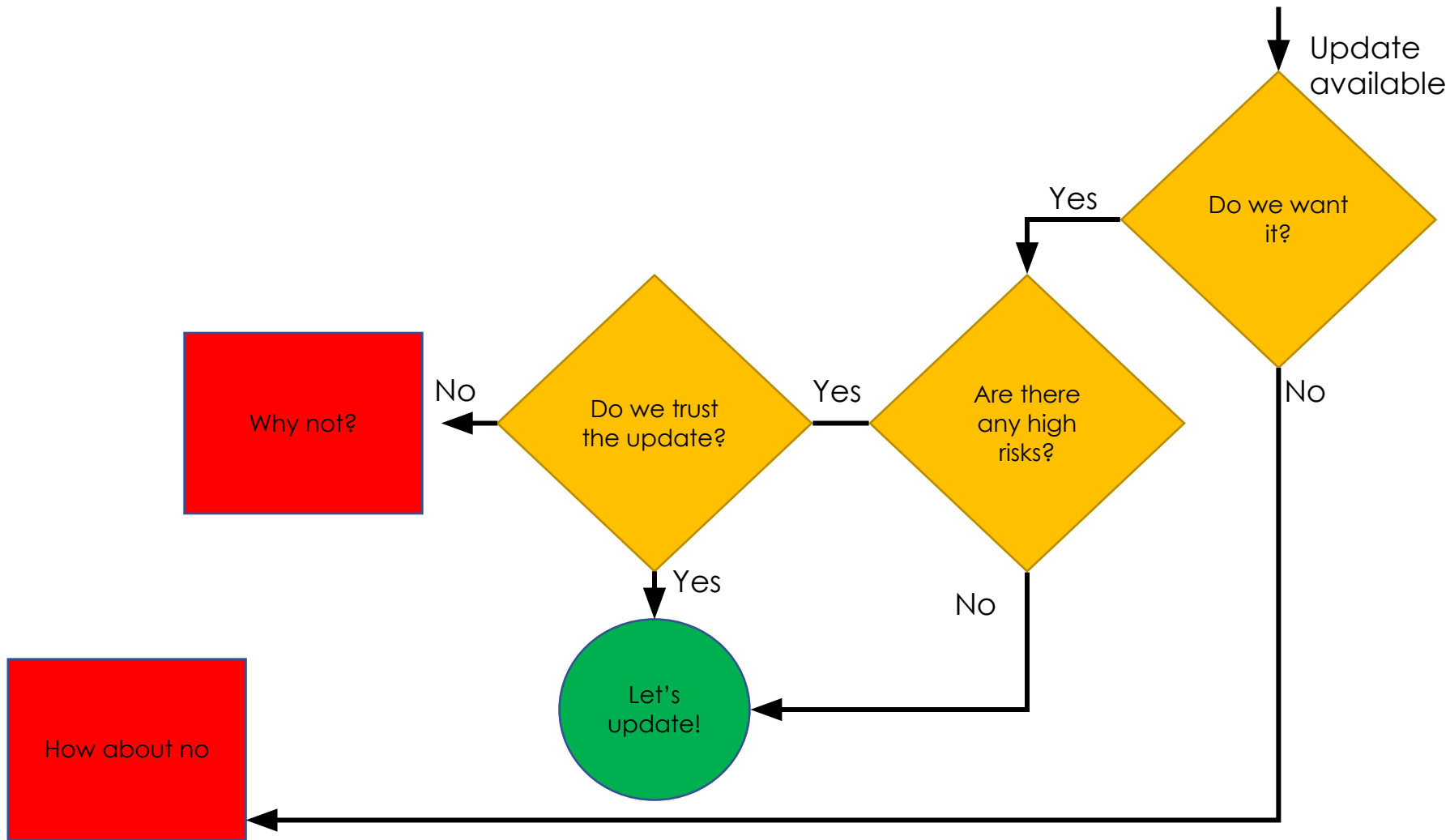
Java 8 is still the standard—for now

Let's start with the one question Java developers are always curious about: Which versions are most used in production environments? Consider the following table:

| Java version | % in use |
|--------------|----------|
| 14 | 0.00 |
| 13 | 0.32 |
| 12 | 0.17 |
| 11 | 11.11 |
| 10 | 0.48 |
| 9 | 0.18 |
| 8 Current | 42.02 |
| 8 Lagging | 38.63 |
| 8 Vulnerable | 3.83 |
| 7 | 2.54 |
| pre-7 | 0.73 |
| Non-LTS | 1.14 |

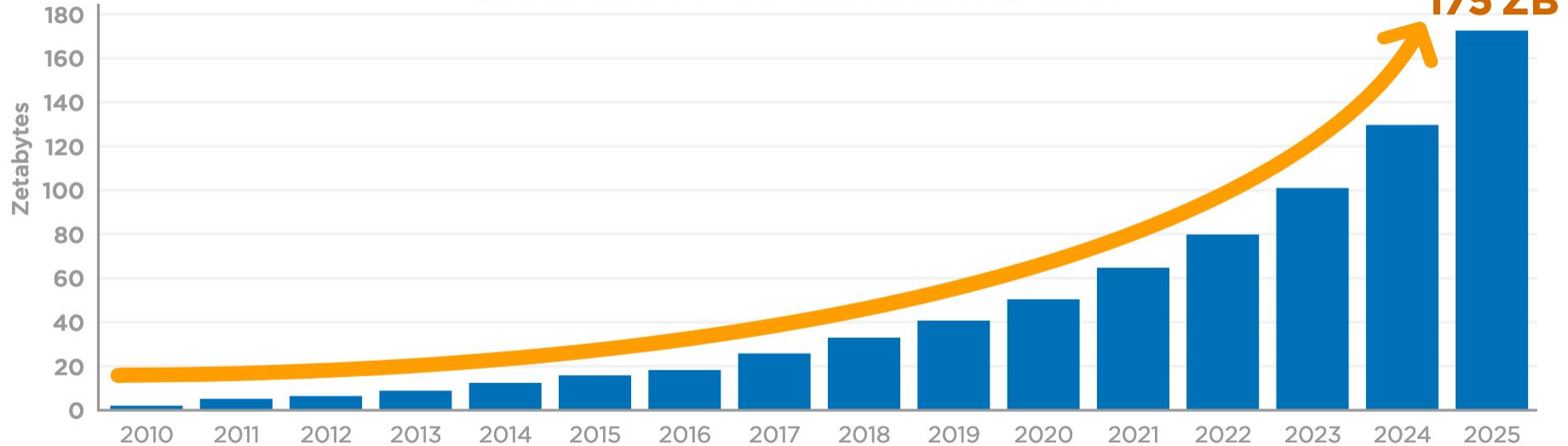


**How do we
update?**



THE PROBLEM IS NOT THE CODE, IT'S THE DATA. BIG DATA.

Annual Size of the Global Datasphere



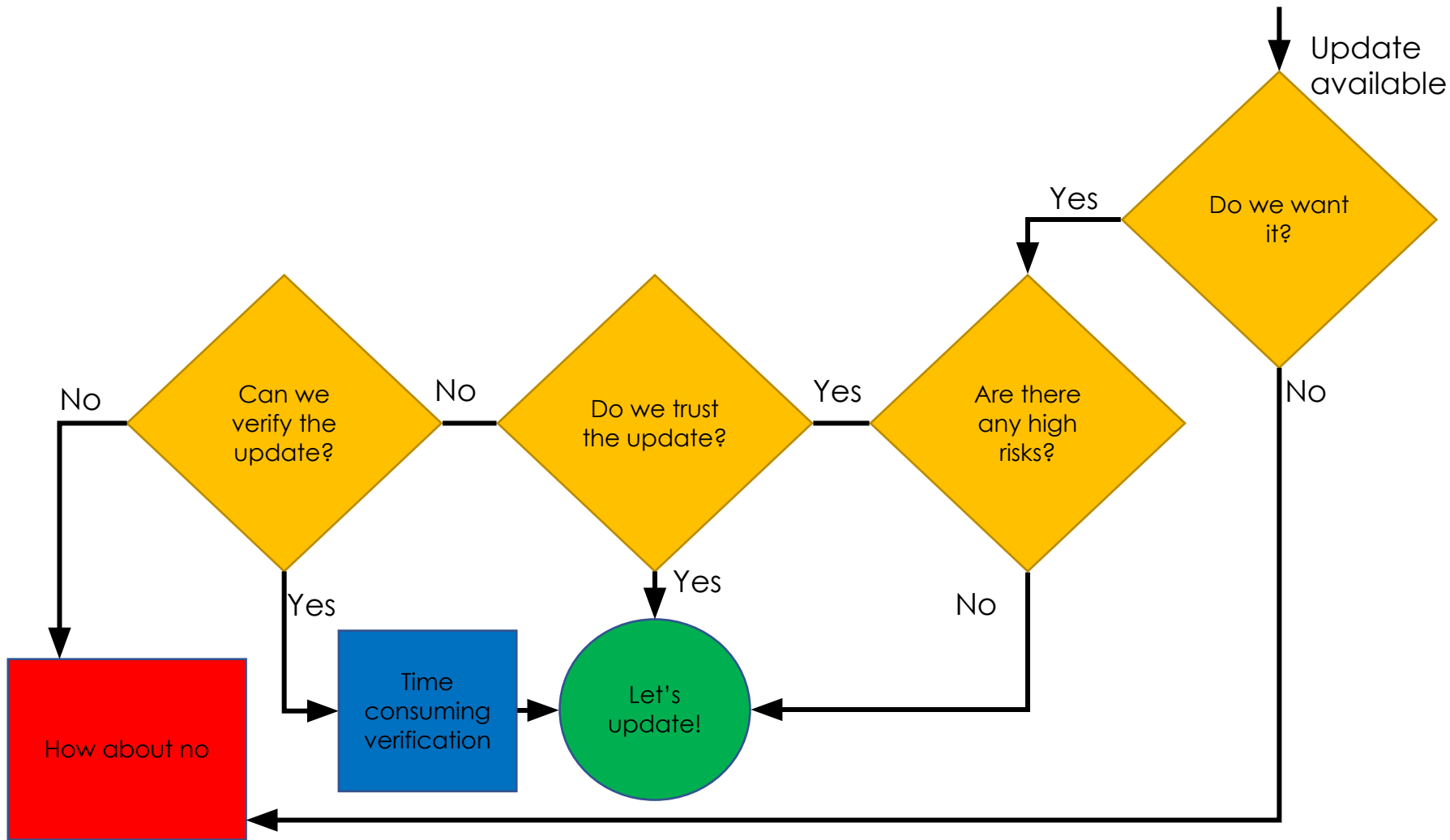
Source: Data Age 2025, sponsored by Seagate with data from IDC Global DataSphere, Nov 2018

@dixie3flatline

@jbaruch

#DODBuf

jfrog.com/shownotes

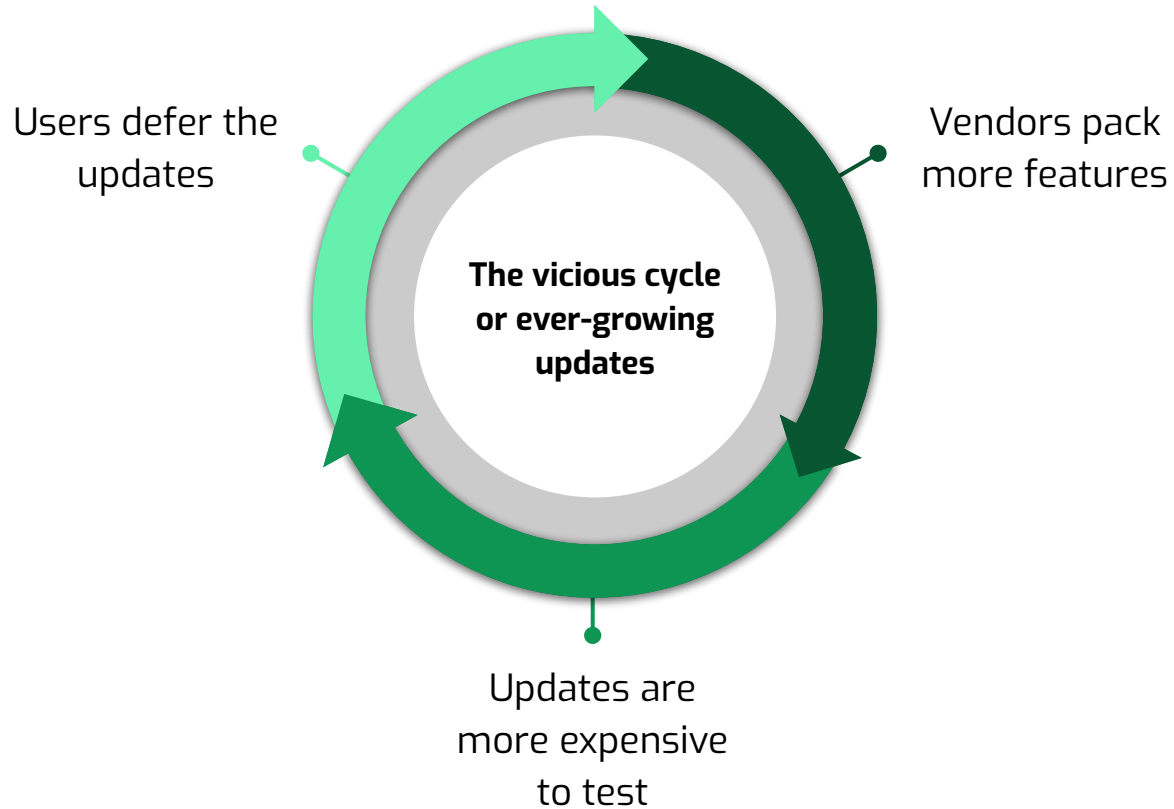




Features
that we
want



Acceptance
tests costs



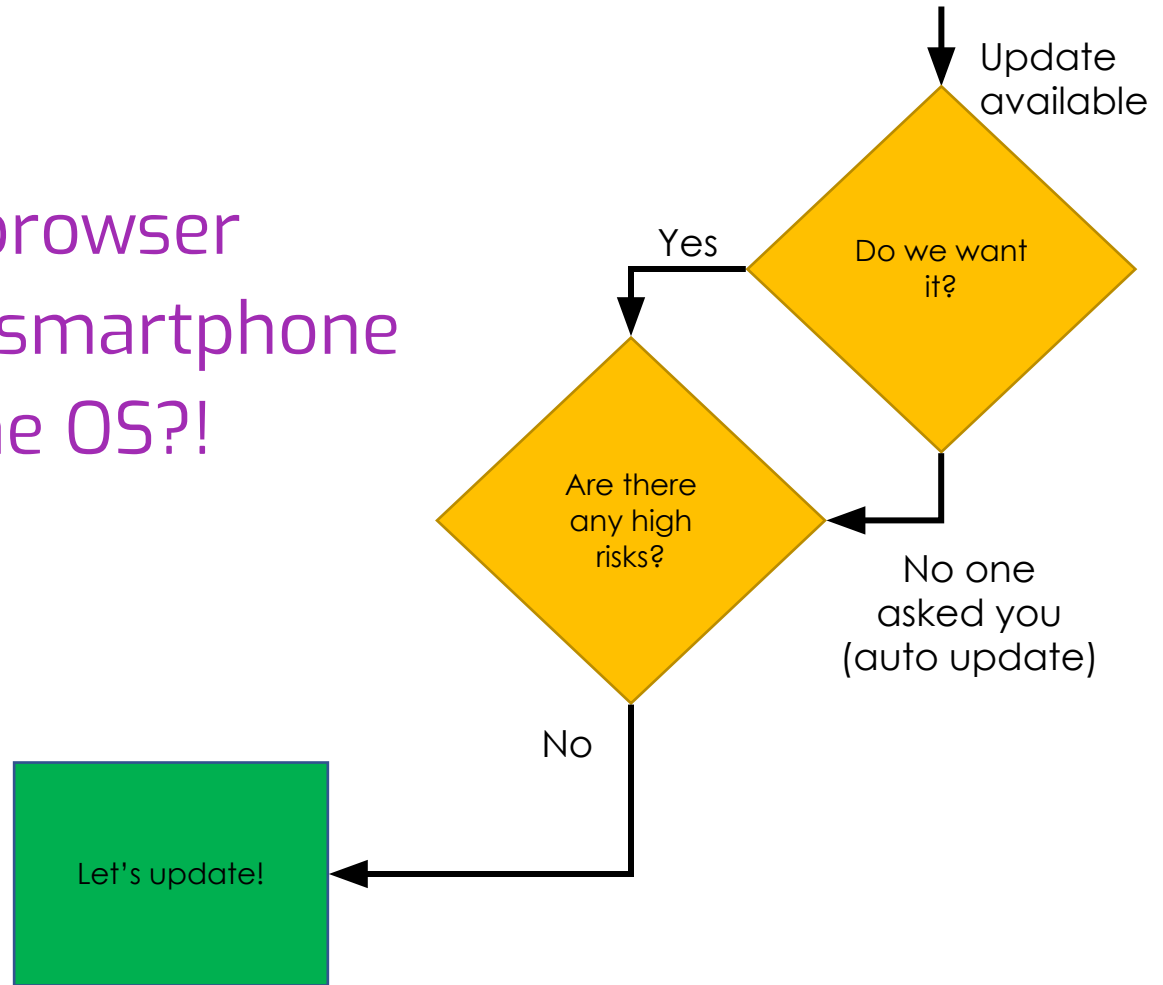


B

A

Start

- Your browser
- Twitter in your browser
- Twitter on your smartphone
- Your smartphone OS?!



**What could possibly go
wrong?**



LEARN MORE ABOUT THE APP >

[FEATURES](#)

[APP](#)

[SUPPORT](#)

[BLOG](#)

A self-improving system.

From the moment you activate it, OnHub automatically starts learning and improving itself so you'll always have optimal Wi-Fi performance. Plus, it stays current with the latest changes in device software or security, making it compatible with new devices.

[@dixie3flatline](#)

[@jbaruch](#)

[#DODBuf](#)

[jfrog.com/shownotes](#)

Google Wifi

Sincerest Apologies for any Issues

Dear Google Wifi & OnHub customers,

Today we experienced an issue with our Google Accounts engine that may have affected your Google Wifi and OnHub devices. This caused some devices to automatically reset to the initial state you bought them in and they will unfortunately need to be set up again. This has not affected the software or performance of the device but it does need to be re-setup.

Visit this [dedicated support page](#) for more information and step-by-step instructions to get back online. If you set up your Wi-Fi with the same network name and password as before, your household connected devices should automatically reconnect.

If you do not want to set up the devices right now, you can always connect to the setup Wi-Fi network — the network name and password are printed on the base of your primary device (the one wired to the modem). This should get you connected to the internet immediately.

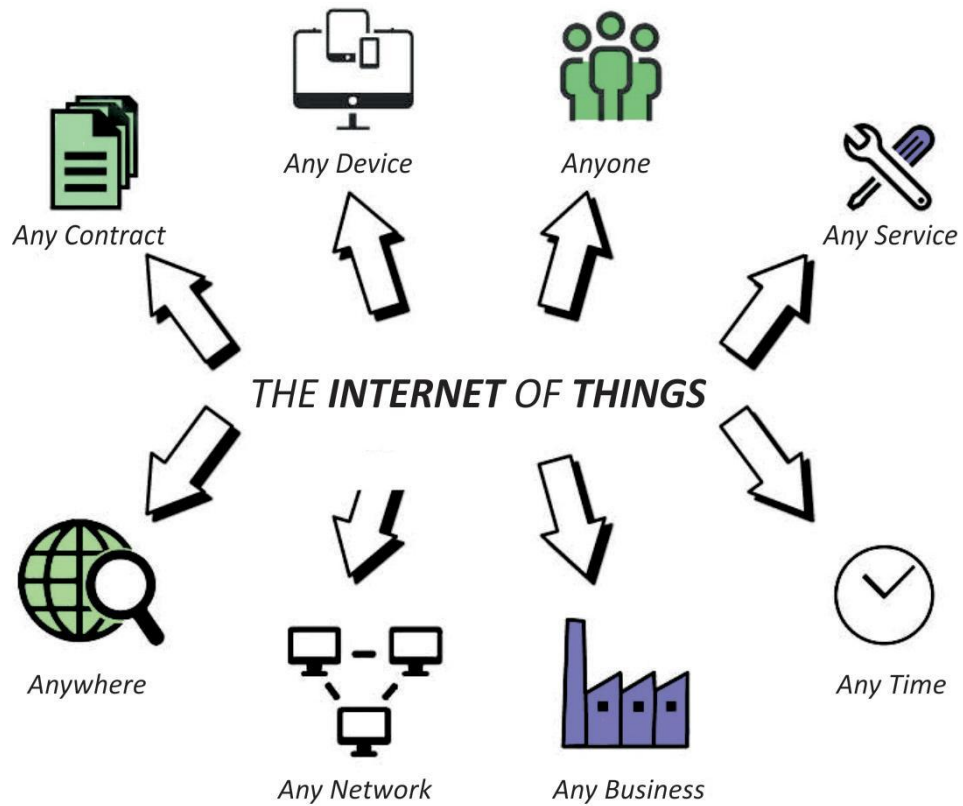
We know how important Wi-Fi is to you and share our sincerest apologies for the inconvenience this has caused.

Ben Brown On behalf of the Google Wifi and OnHub team

Continuous updates pattern: Local Rollback

- **Problem:** update went catastrophically wrong and an over the-air patch can't reach the device
- **Solution:** Have a previous version saved on the device prior to update. Rollback in case problem occurred





Jaguar I-PACE Recalled, Needs Software Update To Fix Regenerative Brakes



JUN 08, 2019 at 9:20AM



By: Mark Kane

Lack of over-the-air updates forces Jaguar to conduct an ordinary recall of the I-PACE to solve a software issue related to a regenerative brake system failure.

Continuous updates pattern: OTA Software Updates

- **Problem:** physical recalls are costly. Extremely costly. Also, you can't force an upgrade.
- **Solution:** Implement over the air software updates, preferably, continuous updates.

**Continuous OTA updates are like normal OTA updates,
but better**

Sudden and erratic braking on autopilot | Tesla

<https://forums.tesla.com/forum/forums/sudden-and-erratic-braking-autopilot> ▼

Feb 27, 2019 - 51 posts - 34 authors

I have recently encountered a few incidents where my model x **suddenly brakes** while on **auto pilot** on the highway with no reason that I can ...

| | | |
|---|----------|--------------|
| Car suddenly slamming on brakes while auto pilot | 43 posts | May 8, 2018 |
| Shadow Braking during Autopilot still an issue? | 51 posts | Mar 10, 2019 |
| Autopilot braking suddenly when no car present in front | 7 posts | Sep 12, 2018 |



106

Posted by u/dellfanboy  Owner Model 3 LR 4 months ago

Phantom braking! Let's talk about it

General

So now that Navigate on Autopilot without input is being released, can we talk about phantom braking?

I'm on 2019.8.3 and the issue happened twice on a 2 hour drive. The first time, wasn't related to an overpass and the second was overpass related. Both times scared my passengers and I had to just turn it off for the rest of the ride.

Am I the only person who only uses autopilot driving solo due to phantom braking? Tesla needs to fix this ASAP.

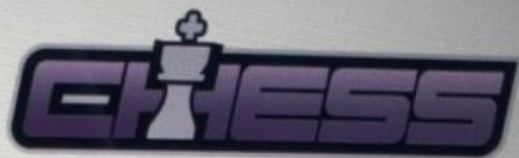
 79 Comments  Give Award  Share  Save  Hide  Report



What's New in This Update

Chess

Play Chess against your passenger or challenge four different levels of artificial intelligence. Move by dragging and dropping the chess piece during your turn.



As with all Tesla Arcade games, you can play when your car is in PARK by tapping the Application Launcher, then tap the Arcade icon and select your desired game from the menu.

Media Volume Improvements

To make it easier to speak when dropping off or picking up passengers, music volume will be lowered when any door is opened.

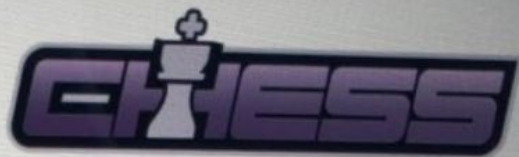
This release contains minor improvements and bug fixes.



What's New in This Update

Chess

Play Chess against your passenger or challenge four different levels of artificial intelligence. Move by dragging and dropping the chess piece during your turn.



As with all Tesla Arcade games, you can play when your car is in PARK by tapping the Application Launcher, then tap the Arcade icon and select your desired game from the menu.

Media Volume Improvements

To make it easier to speak when dropping off or picking up passengers, music volume will be lowered when any door is opened.

This release contains minor improvements and bug fixes.

Continuous updates pattern: Continuous Updates

- **Problem:** In batch updates, important features wait for unimportant features.
- **Solution:** Implement continuous updates.

You thought your problems were hard?

THINGS UNDER YOUR CONTROL

SERVER-SIDE UPDATES

**IOT (MOBILE, AUTOMOTIVE,
EDGE) UPDATES**

@dixie3flatline

@jbaruch

#DODBuf

jfrog.com/shownotes

You thought your problems were hard?

| THINGS UNDER YOUR CONTROL | SERVER-SIDE UPDATES | IOT (MOBILE, AUTOMOTIVE, EDGE) UPDATES |
|--------------------------------|---------------------|--|
| The availability of the target | ✓ | ✗ |

You thought your problems were hard?

| THINGS UNDER YOUR CONTROL | SERVER-SIDE UPDATES | IOT (MOBILE, AUTOMOTIVE, EDGE) UPDATES |
|--------------------------------|---------------------|--|
| The availability of the target | ✓ | ✗ |
| The state of the target | ✓ | ✗ |

You thought your problems were hard?

| THINGS UNDER YOUR CONTROL | SERVER-SIDE UPDATES | IOT (MOBILE, AUTOMOTIVE, EDGE) UPDATES |
|--------------------------------|---------------------|--|
| The availability of the target | ✓ | ✗ |
| The state of the target | ✓ | ✗ |
| The version on the target | ✓ | ✗ |

You thought your problems were hard?


| THINGS UNDER YOUR CONTROL | SERVER-SIDE UPDATES | IOT (MOBILE, AUTOMOTIVE, EDGE) UPDATES |
|--------------------------------|---------------------|--|
| The availability of the target | ✓ | ✗ |
| The state of the target | ✓ | ✗ |
| The version on the target | ✓ | ✗ |
| The access to the target | ✓ | ✗ |

Software

How one bad algorithm cost traders \$440m

A look at the worst software testing day ever

By [Dan Olds](#), [OrionX](#) 3 Aug 2012 at 09:32

118  [SHARE](#) ▼



Knight Capital, a firm that specialises in executing trades for retail brokers, took \$440m in cash losses Wednesday due to a faulty test of new trading software. This morning reports were calling it a trading "glitch", which isn't nearly as accurate as the term I'd use: "f**king disaster".

KNIGHT-MARE

- New system reused old APIs
- 1 out of 8 servers was not updated
- New clients sent requests to machine contained old code
- Engineers removed working code from updated servers, increasing the load on the un-updated server
- No monitoring, no alerting, no debugging

Continuous updates pattern: Automated Deployment

- **Problem:** People suck at repetitive tasks.
- **Solution:** Automate everything.

Continuous updates pattern: Frequent Updates

- **Problem:** Seldom deployments generate anxiety and stress, leading to errors.
- **Solution:** Update frequently to develop skill and habit.

Continuous updates pattern: State awareness


- **Problem:** Target state can affect the update process and the behavior of the system after the update.
- **Solution:** Know and consider target state when updating. Reverting might require reverting the state.

Data Centre ► **Cloud**

Cloudflare gave everyone a 30-minute break from a chunk of the internet yesterday: Here's how they did it

DevOps-tating automation cockup... or machines trying to take over the web? *El Reg* talks to the CTO

By [Richard Speed](#) 3 Jul 2019 at 12:17

43  SHARE ▼

Interview Internet services outfit Cloudflare took careful aim and unloaded both barrels at its feet yesterday, taking out a large chunk of the internet as it did so.

In an impressive act of openness, the company posted a distressingly detailed [post-mortem](#) on the cockwomblerly that led to the outage. *The Register* also spoke to a weary John Graham-Cumming, CTO of the embattled company, to understand how it all went down.

This time it wasn't [Verizon wot dunnit](#); Cloudflare engineered this outage all by itself.

Cloud-dark

- New rules are deployed frequently to battle attacks
- Deployment of a single misconfigured rule
- Included regex to spike CPU to 100%
- “Affected region: Earth”

Continuous updates pattern: Progressive Delivery

- **Problem:** Releasing a bug affects ALL the users.
- **Solution:** Release to a small number of users first effectively reducing the blast radius and observe.
If a problem occurs, stop the release, revert or update the affected users.

Continuous updates pattern: Observability

- **Problem:** Some problems are hard to trace relying on user feedback only
- **Solution:** Implement tracing, monitoring and logging

Continuous updates pattern: Rollbacks

- **Problem:** Fixes might take time, users suffer in the interim
- **Solution:** Implement rollback, the ability to deploy a previous version without delay

Continuous updates pattern: Feature Flags

- **Problem:** Rollbacks are not always supported by the deployment target platform
- **Solution:** Embed 2 versions of the features in the app itself and trigger them with API calls

CONTINUOUS UPDATES

- Frequent
- Automatic
- Tested
- Progressively delivered
- State-aware
- Observability
- ✱ Local Rollbacks

{* NETWORKS *}

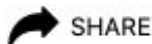
Finally, made it to the weekend, time to breathe, relax, and... Cloudflare's taken down a chunk of the web

DNS provider goes dark amid bad routing, world+dog goes through nine minutes of terror

Fri 17 Jul 2020 // 22:32 UTC

17  [GOT TIPS?](#)

Thomas Claburn in San Francisco [BIO](#) [EMAIL](#) [TWITTER](#)



Updated Global internet glue Cloudflare experienced a brief network outage on Friday that broke multiple apps and websites, including your humble *Register*.

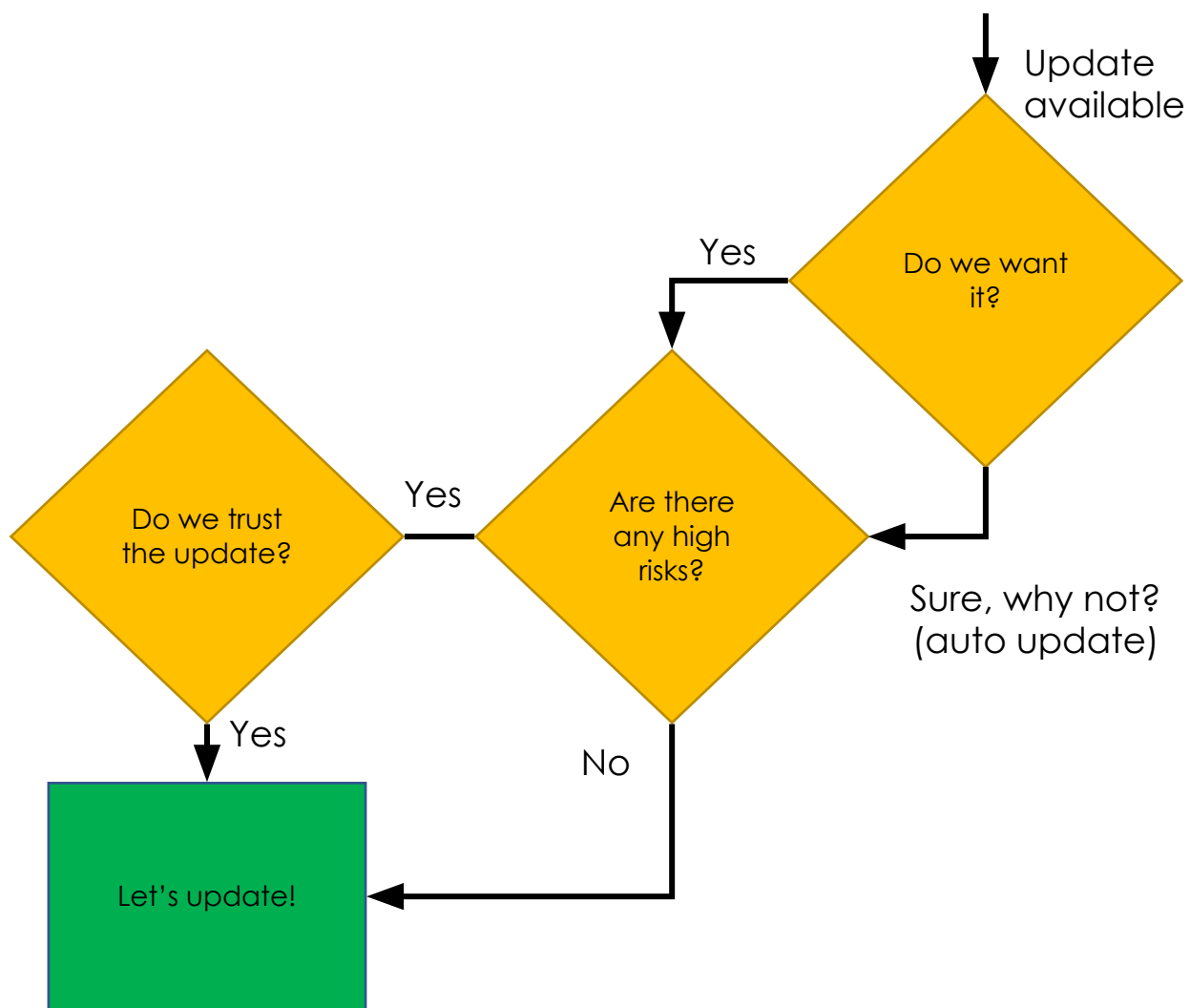
On its [status page](#), as of Jul 17, 21:37 UTC, the DNS-and-everything-else provider said it was "investigating issues with Cloudflare Resolver and our edge network in certain locations," and warned that customers in certain regions may experience failures or errors.

CLOUD-DARK
(THE SEQUEL)

- While doing maintenance on Newark->Chicago segment, engineers wanted to route that traffic through Atlanta
- They updated the config manually
- They routed ALL THE TRAFFIC through Atlanta instead
- Atlanta crashed, in chain reaction everything else crashed as well
- “Affected region: Earth”

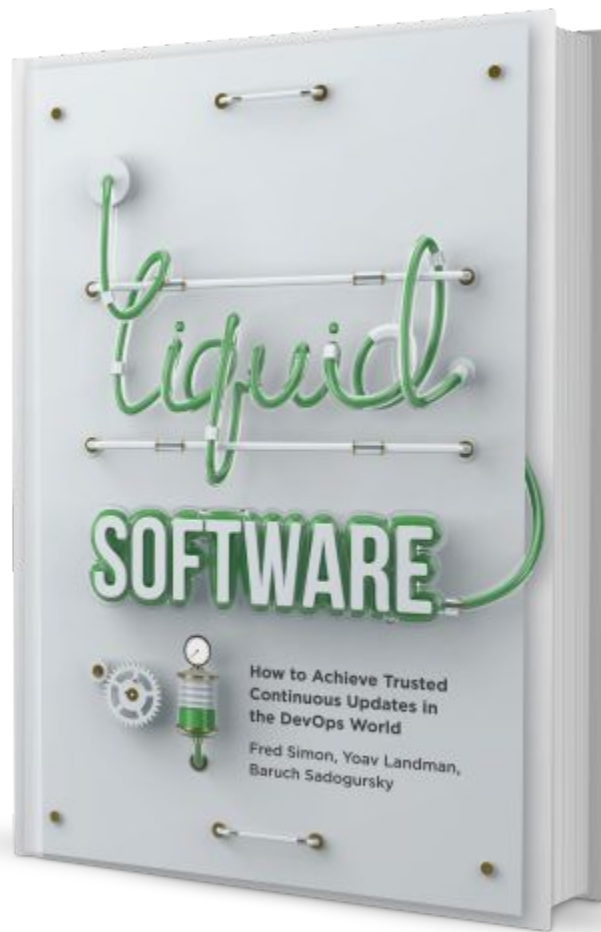
**CONTINUOUS UPDATES PATTERN:
AUTOMATED DEPLOYMENT**

- Problem: People suck at repetitive tasks.
- Solution: Automate everything.



” *Our goal is to transition from bulk and rare software updates to extremely tiny and extremely frequent software updates; so tiny and so frequent that they provide an illusion of software flowing from development to the update target.*

We call it the Liquid Software vision.



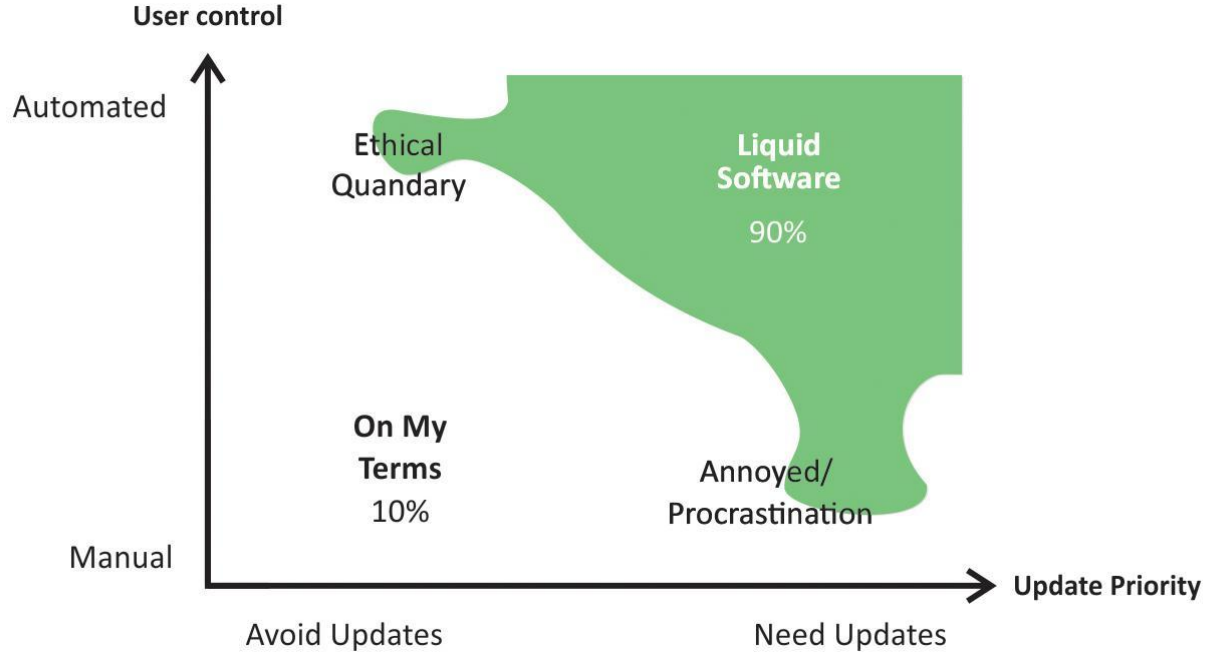
@dixie3flatline

@jbaruch

#DODBuf

jfrog.com/shownotes

CORNER CASES?



Software

Airbus A350 software bug forces airlines to turn planes off and on every 149 hours

Patch your darn metal bird, sighs EU aviation agency

By [Gareth Corfield](#) 25 Jul 2019 at 10:02

161  SHARE ▼




An Airbus promotional picture of an A350-1000. Its sister type, the A350-941, is the affected model of airliner

{* SOFTWARE *}

Boeing 787s must be turned off and on every 51 days to prevent 'misleading data' being shown to pilots

US air safety bods call it 'potentially catastrophic' if reboot directive not implemented

By [Gareth Corfield](#) 2 Apr 2020 at 14:45

158  SHARE ▼



My first exposure to this was a story told to me by Gail Murphy, then my professor in a third-year software engineering course, about the production of the Boeing 787's predecessor, the 777. The 777 was Boeing's first "fly-by-wire" plane. In other words, the software had to work, as it was purely software that was controlling the flaps and rudder and preventing the plane from falling out of the sky. Gail recounted that, due to the criticality of the software, Boeing decided to put all the heads of software engineering on the test flight. During the test flight, the plane started shaking, and the software engineers were able to implement a midflight fix via the turbulence control software.¹³ I have yet to find a better example of an organization putting software leaders' skin in the game of high-stakes product development.

The depth of Boeing's understanding of the business implications of

Q&A AND TWITTER ADS

- @dixie3flatline
- @jbaruch
- #DODBuf
- <https://liquidsoftware.com>
- <https://jfrog.com/shownotes>