



Interaction to Next Paint

Measuring responsiveness on the web



Kevin Farrugia
@imkevdev

```
filterByOrg = filterByOrg ? study.lead_organization === filterByOrg : true  
filterByStatus = filterByStatus ? study.status === filterByStatus : true  
filterByMatchStatus) {
```

```
function filterStudies({ studies, filterByOrg = false, filterByStatus = false, filterByMatchStatus = false }) {  
  return studies.filter(study => {  
    return filterByOrg === true ? study.lead_organization === filterByOrg : true  
    return filterByStatus === true ? study.status === filterByStatus : true  
    return filterByMatchStatus === true ? study.matchStatus === filterByMatchStatus : true  
  })  
}
```

Responsiveness

INP measures how quickly a page responds to a user interaction



Extended
Malta



Responsiveness

Blocking Example

Input your username and submit the form. INP is logged to console.

First Input Delay

- Measures the *first* interaction on a page.
- Only includes the *delay* in processing.



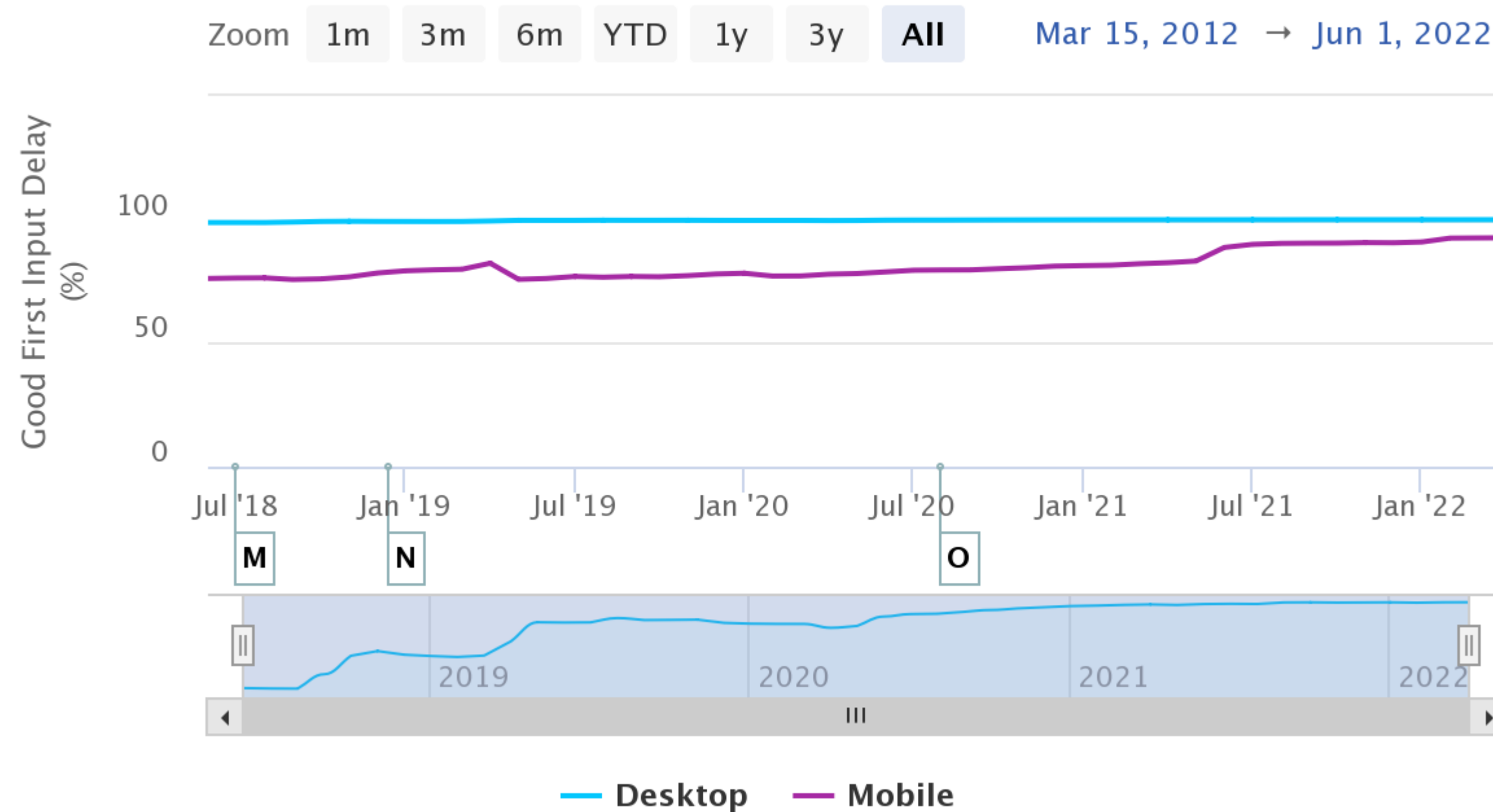
Extended
Malta



Good FID

Timeseries of Good First Input Delay

Source: httparchive.org



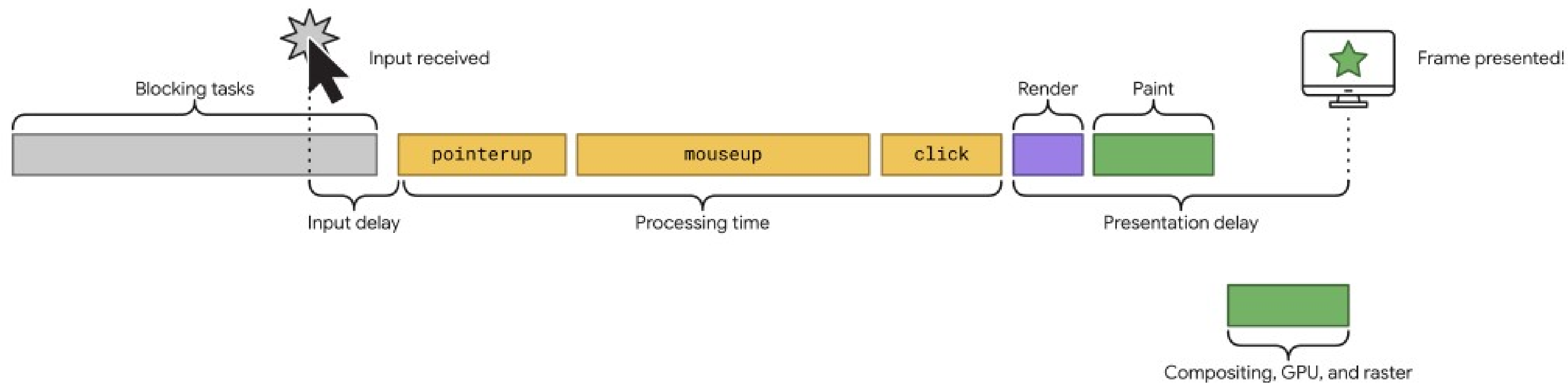
The number of websites achieving a **good FID** score has increased from 72.1% of origins in 2018 to 92.5% of origins in May 2022.

FID on desktop was always > 98%.



Interaction to Next Paint

- Considers *all* user interactions.
- Measures the time from the input until the frame is painted to screen.

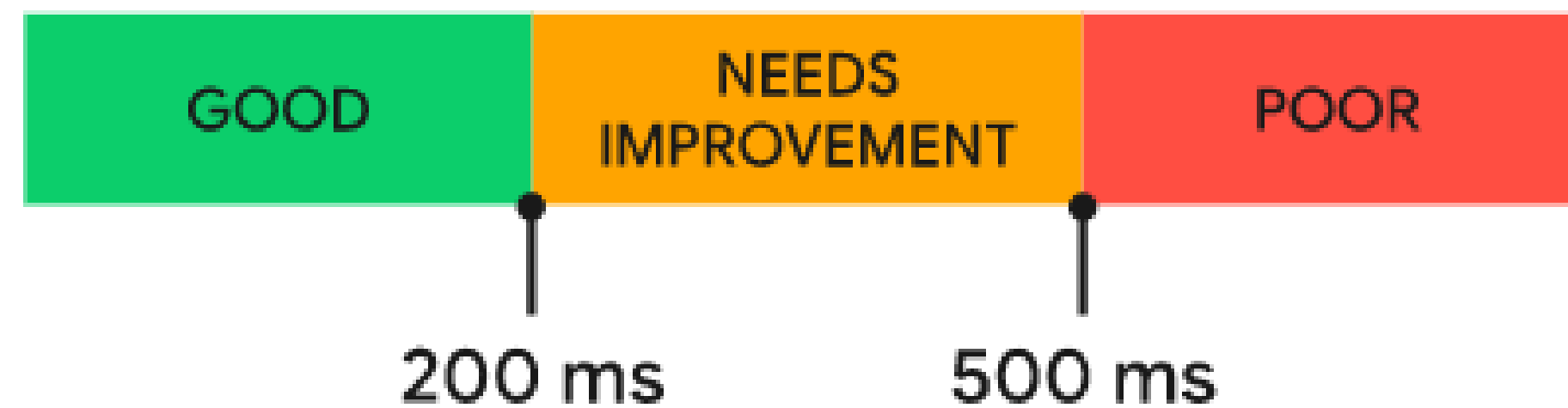


The “worst” INP

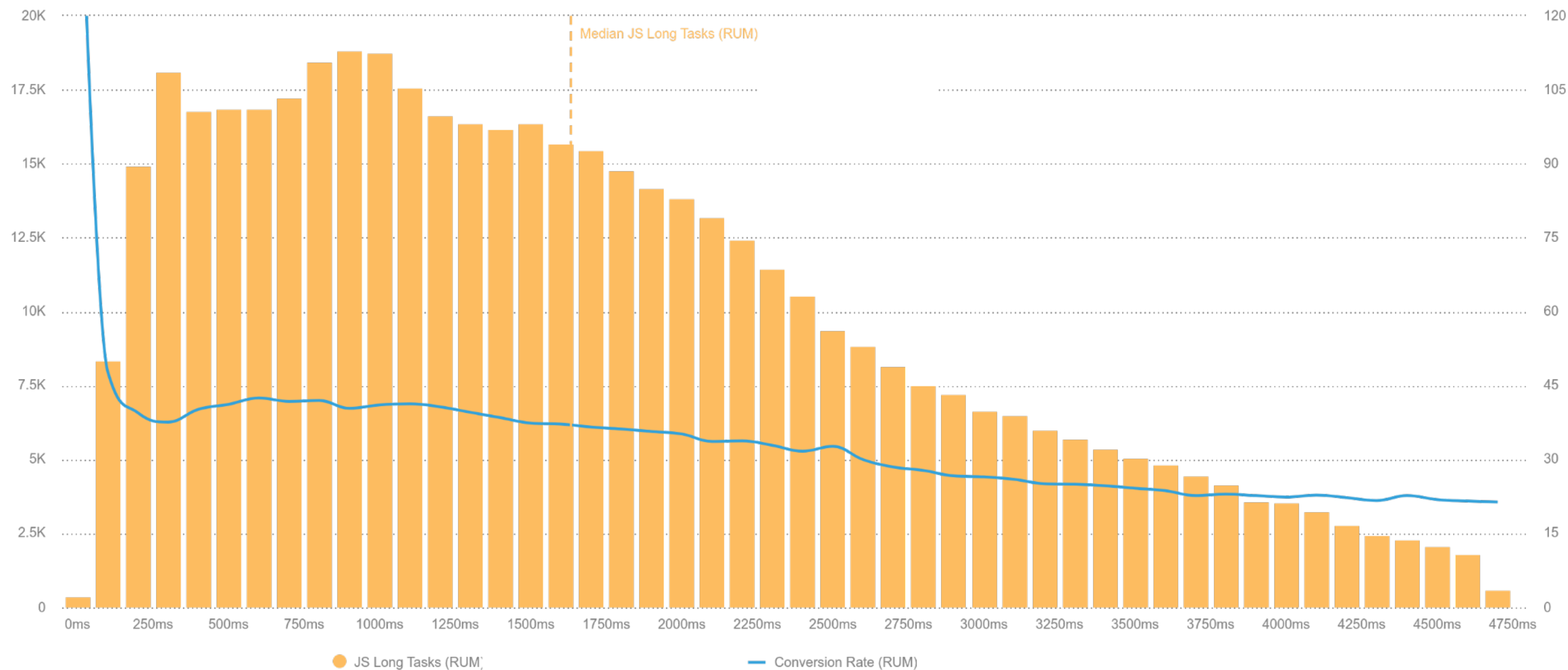
- INP score is the worst interaction on your page.
- > 50 interactions, then 98th percentile.

INP

Interaction to Next Paint



It's good for business!



The more long tasks, the less likely a user is to convert.

The median conversion rate for users that experience < 500ms JS long tasks is 38.5%, while users that experience > 4000ms long tasks have a conversion rate of 11.8%.



Optimizing INP

- Minimize main-thread work.
- Optimize JavaScript bundles.
- Audit your event handlers.
- Beware of hydration in Single Page Apps.

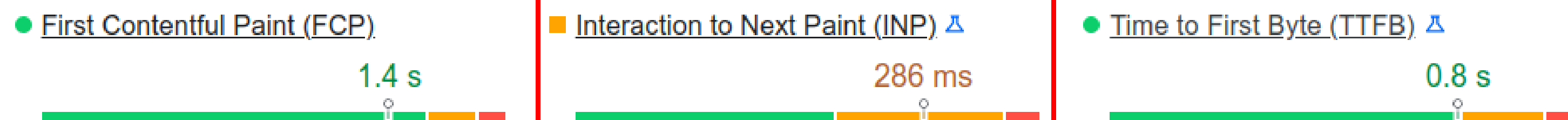


Measuring INP

- CrUX dataset, including PageSpeed Insights.
- [web-vitals library](#)
- PerformanceObserver.



OTHER NOTABLE METRICS



INP in the real world

Technology	Origins	Good INP
ALL	6,754,899	55%
jQuery	5,591,806	57%
AngularJS	85,049	46%
Vue.js	211,468	42%
React	582,000	35%
Preact	183,771	35%
Svelte	8,062	33%

CWV technology report
INP data for May 2022



Extended
Malta



Thank you

Recommended reading:

- web.dev/inp
- debugbear.com/docs/metrics/interaction-to-next-paint
- Correlation between Total Blocking Time and Interaction to Next Paint on Mobile
(Annie Sullivan)
- imkev.dev/inp

[@imkevdev](https://twitter.com/imkevdev)

